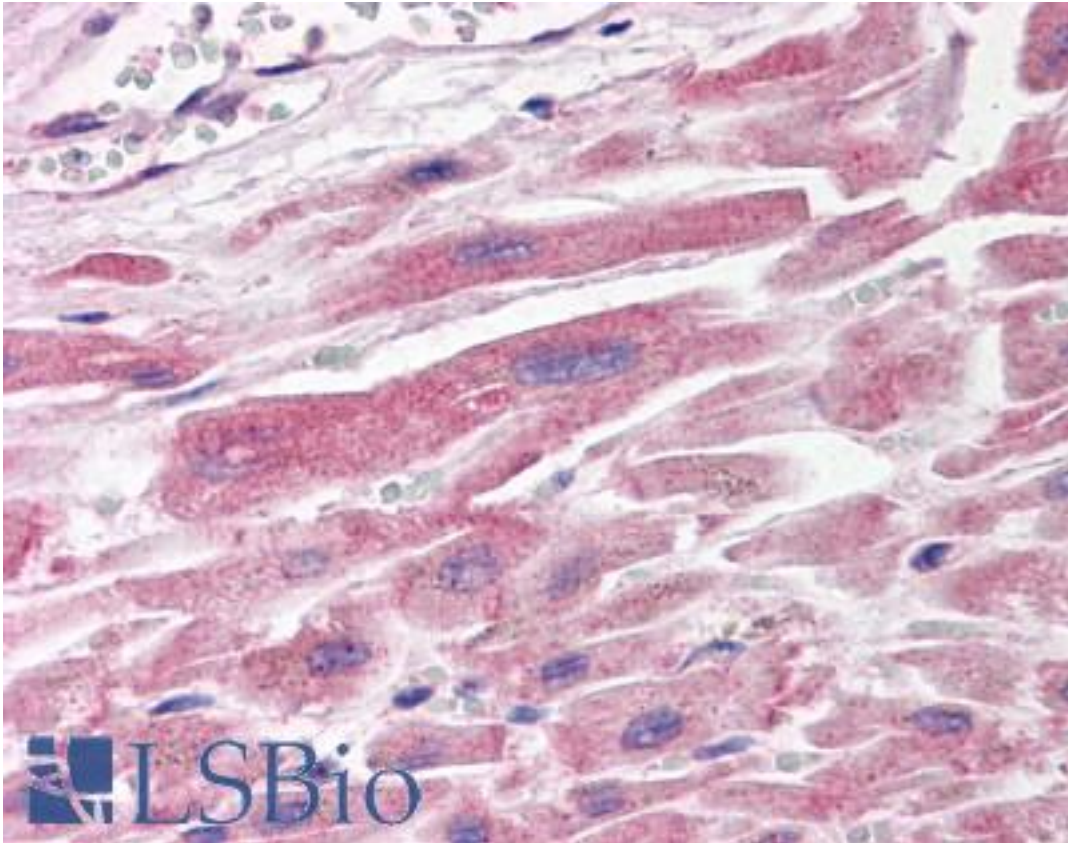


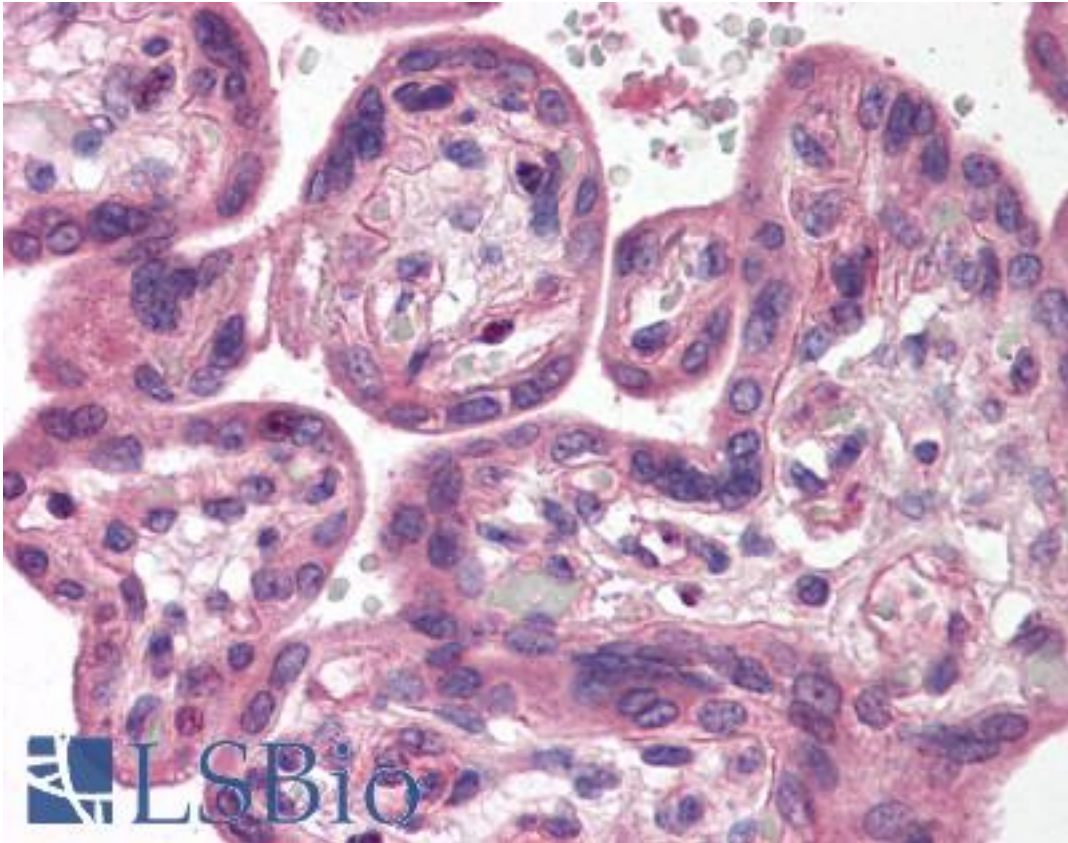
SH3GLB1 / Bif / Endophilin B1 Rabbit anti-Human Polyclonal (C-Terminus) Antibody - LS-B550 - LSBio	
CatalogID:	LS-B550
Validation:	This antibody replaces catalog number LS-C19603. It has been validated for use in the following assays: IHC.
Target:	SH3-domain GRB2-like endophilin B1 (SH3GLB1)
Synonyms:	SH3GLB1 Antibody, CGI-61 Antibody, Endophilin B1 Antibody, Endophilin-B1 Antibody, PPP1R70 Antibody, Bax-interacting factor 1 Antibody, Bif-1 Antibody, DJ612B15.2 Antibody, KIAA0491 Antibody, SH3-containing protein SH3GLB1 Antibody
Family / Subfamily:	Apoptosis
Host	SH3GLB1 antibody was produced in Rabbit
Clonality:	Polyclonal
Immunogen Species:	SH3GLB1 / Bif / Endophilin B1 antibody was raised against Human
Antigen Type:	Synthetic peptide
Immunogen:	SH3GLB1 / Bif / Endophilin B1 antibody was raised against synthetic peptide from human SH3GLB1 / Bif-1.
Specificity:	15 amino acid peptide from near the carboxy terminus of human BIF
Epitope:	C-Terminus
Reactivity:	Human, Mouse
Purification:	Immunoaffinity purified
Presentation:	PBS, 0.02% sodium azide.
Recommended Storage:	Short term 4°C, long term aliquot and store at -20°C, avoid freeze thaw cycles. Store undiluted.
Usage Summary:	Immunohistochemistry: LS-B550 was validated for use in immunohistochemistry on a panel of 21 formalin-fixed, paraffin-embedded (FFPE) human tissues after heat induced antigen retrieval in pH 6.0 citrate buffer. After incubation with the primary antibody, slides were incubated with biotinylated secondary antibody, followed by alkaline phosphatase-streptavidin and chromogen. The stained slides were evaluated by a pathologist to confirm staining specificity. The optimal working concentration for LS-B550 was determined to be 2.5 ug/ml.
Uses:	IHC - Paraffin (2.5 µg/ml), ICC, Western blot (Optimal dilution to be determined by the researcher)
Size:	50 µg
Concentration:	1 mg/ml

Immunohistochemistry Image:



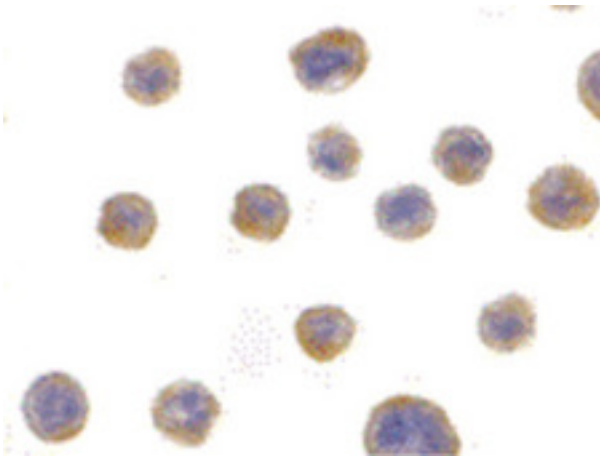
Anti-SH3GLB1 / Bif-1 antibody IHC of human heart. Immunohistochemistry of formalin-fixed, paraffin-embedded tissue after heat-induced antigen retrieval. Antibody LS-B550 concentration 5 ug/ml.

Immunohistochemistry Image:



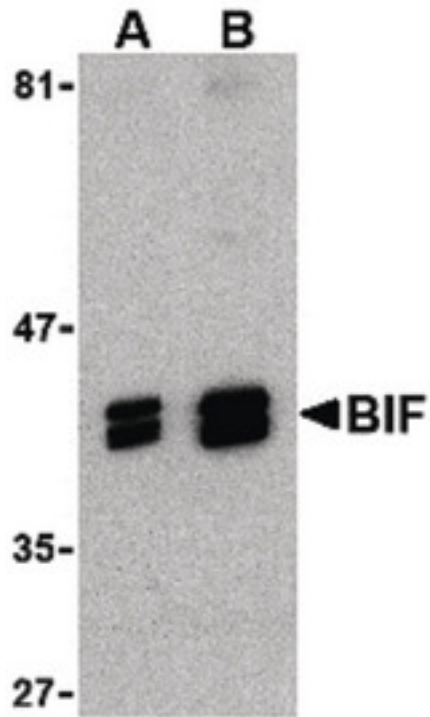
Anti-SH3GLB1 / Bif-1 antibody IHC of human placenta. Immunohistochemistry of formalin-fixed, paraffin-embedded tissue after heat-induced antigen retrieval. Antibody LS-B550 concentration 5 ug/ml.

Immunocytochemistry Image:



Immunocytochemistry of BIF in HeLa with BIF antibody at 10 ug/ml.

Western Blot Image:



Western blot of BIF in HeLa cell lysate with BIF antibody at (A) 1 and (B) 2 ug/ml.

Requested From:

Japan

Laboratory Reagent For In Vitro Research Use Only

Not for resale without prior written consent from LifeSpan BioSciences, Inc.

Created on 9/24/2014

© 2014 LifeSpan BioSciences