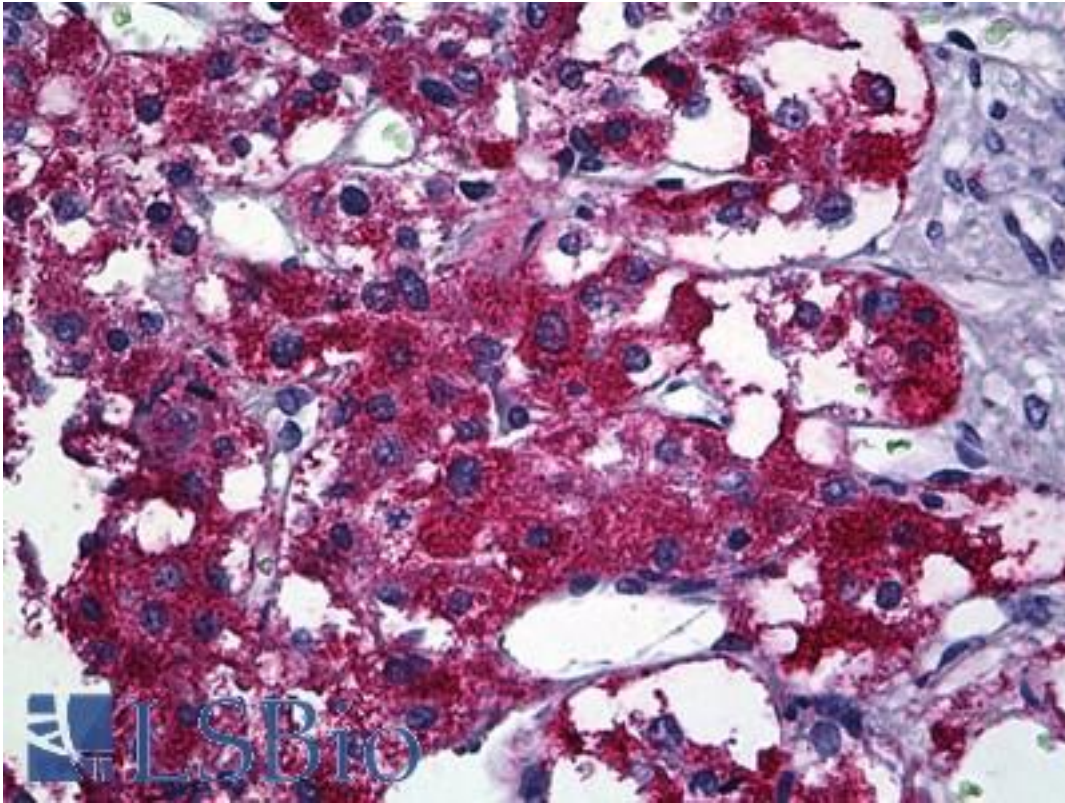


**PIM1 / Pim-1 Mouse anti-Human Monoclonal (3F5) Antibody - LS-B5498 - LSBio**

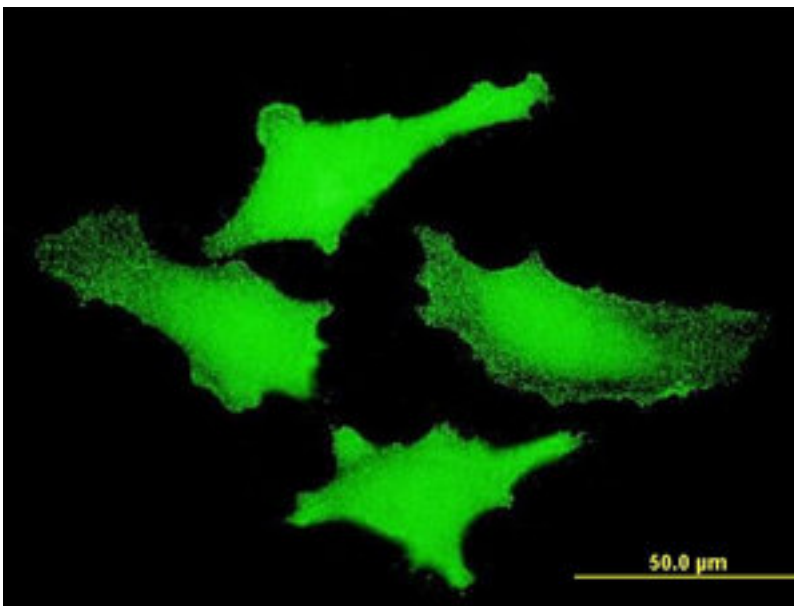
|                             |  |
|-----------------------------|--|
| <b>CatalogID:</b>           | LS-B5498   |
| <b>Validation:</b>          | This antibody replaces catalog number LS-C133386. It has been validated for use in the following assays: IHC-P.  |
| <b>Target:</b>              | pim-1 oncogene (PIM1)  |
| <b>Synonyms:</b>            | PIM1 Antibody, Pim-1 kinase 44 kDa isoform Antibody, Proviral integration site 1 Antibody, Oncogene PIM1 Antibody, PIM Antibody, Pim-1 Antibody, Pim-1 oncogene Antibody |
| <b>Family / Subfamily:</b>  | Protein Kinase / PIM   |
| <b>Host</b>                 | PIM1 antibody was produced in Mouse  |
| <b>Clonality:</b>           | Monoclonal   |
| <b>Isotype:</b>             | IgG2a, <sub>l</sub>  |
| <b>Clone Name:</b>          | 3F5  |
| <b>Immunogen Species:</b>   | PIM1 / Pim-1 antibody was raised against Human   |
| <b>Immunogen:</b>           | PIM1 / Pim-1 antibody was raised against pIM1 (AAH20224, 1 a.a. ~ 314 a.a) full length recombinant protein with GST tag. MW of the GST tag alone is 26 KDa.              |
| <b>Specificity:</b>         | Human PIM1   |
| <b>Reactivity:</b>          | Human  |
| <b>Purification:</b>        | Protein A purified   |
| <b>Presentation:</b>        | PBS, pH 7.4.   |
| <b>Recommended Storage:</b> | Short term 4°C, long term aliquot and store at -20°C, avoid freeze thaw cycles.  |
| <b>Usage Summary:</b>       | Immunohistochemistry: Formalin-fixed paraffin-embedded sections. Sandwich ELISA: Recombinant protein.  |
| <b>Uses:</b>                | IHC - Paraffin (5 µg/ml), Immunofluorescence (10 µg/ml), ELISA (Optimal dilution to be determined by the researcher)   |
| <b>Size:</b>                | 50 µg  |
| <b>Concentration:</b>       | 0.5 mg/ml  |

**Immunohistochemistry Image:**



Anti-PIM1 antibody IHC of human adrenal. Immunohistochemistry of formalin-fixed, paraffin-embedded tissue after heat-induced antigen retrieval. Antibody LS-B5498 concentration 5 ug/ml.

**Immunofluorescence Image:**



Immunofluorescence of monoclonal antibody to PIM1 on HeLa cell. [antibody concentration 10 ug/ml].

**Requested From:**

Japan

Laboratory Reagent For In Vitro Research Use Only

Not for resale without prior written consent from LifeSpan BioSciences, Inc.

Created on 9/24/2014

© 2014 LifeSpan BioSciences