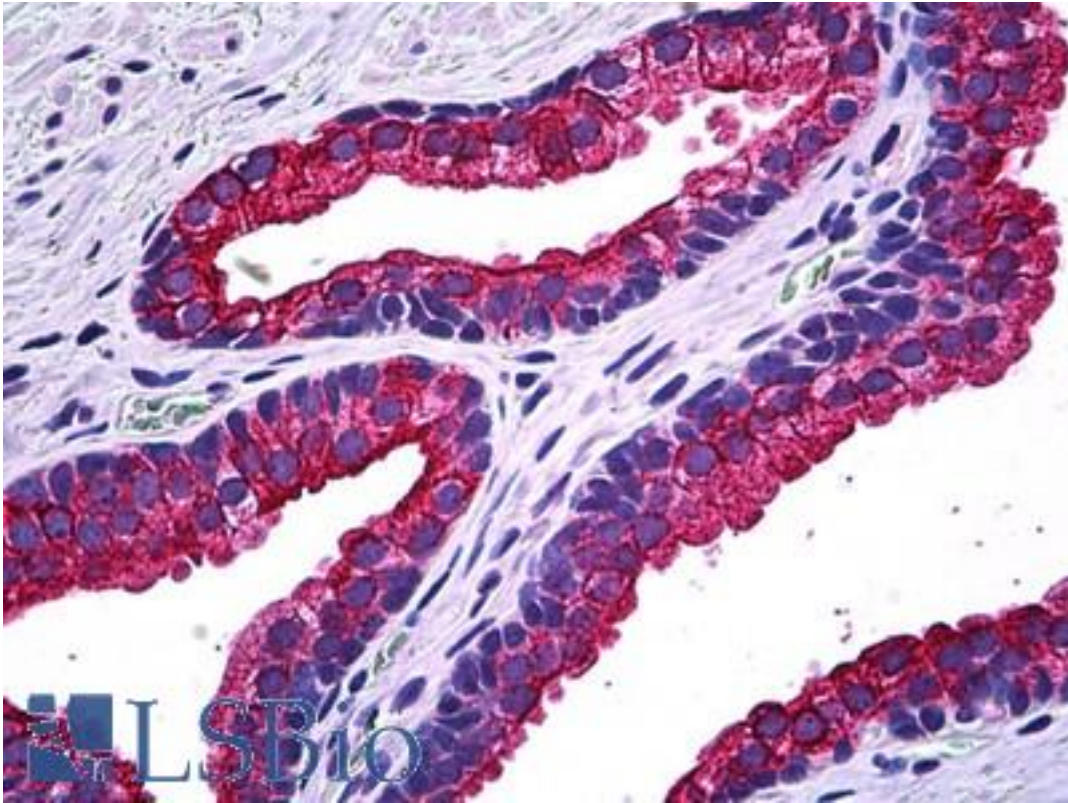


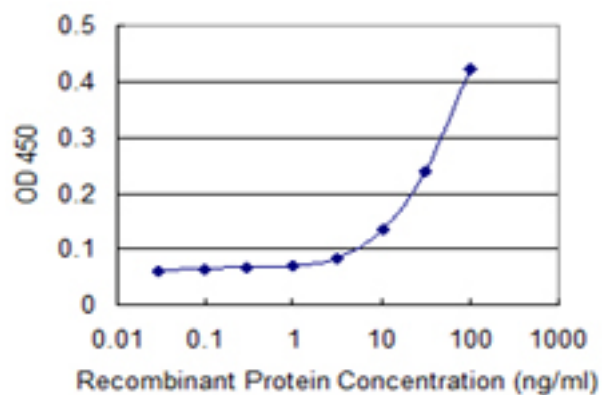
NPRB / NPR2 Mouse anti-Human Monoclonal (1E4) Antibody - LS-B5483 - LSBio	
CatalogID:	LS-B5483
Validation:	This antibody replaces catalog number LS-C133353. It has been validated for use in the following assays: IHC-P.
Target:	natriuretic peptide receptor B/guanylate cyclase B (atrionatriuretic peptide receptor B) (NPR2)
Synonyms:	NPR2 Antibody, ANPRB Antibody, AMDM Antibody, ANP-B Antibody, ANPR-B Antibody, ANPb Antibody, Guanylate cyclase B Antibody, GUCY2B Antibody, GC-B Antibody, GUC2B Antibody, Natriuretic peptide receptor B Antibody, NPR-B Antibody, NPRB Antibody, Natriuretic peptide receptor 2 Antibody, NPRBi Antibody
Family / Subfamily:	Protein Kinase / Receptor guanylate cyclase
Host	NPR2 antibody was produced in Mouse
Clonality:	Monoclonal
Isotype:	IgG2b,k
Clone Name:	1E4
Immunogen Species:	NPRB / NPR2 antibody was raised against Human
Immunogen:	NPRB / NPR2 antibody was raised against nPR2 (-, 131 a.a. ~ 231 a.a) partial recombinant protein with GST tag. MW of the GST tag alone is 26 KDa.
Specificity:	Human NPR2
Reactivity:	Human
Purification:	Protein A purified
Presentation:	PBS, pH 7.4. Sourced in Ascites.
Recommended Storage:	Short term 4°C, long term aliquot and store at -20°C, avoid freeze thaw cycles.
Usage Summary:	Immunohistochemistry: Formalin-fixed paraffin-embedded sections. Sandwich ELISA: Recombinant protein. Western blot with the recombinant protein used as the immunogen.
Uses:	IHC - Paraffin (5 µg/ml), Western blot, ELISA (Optimal dilution to be determined by the researcher)
Size:	50 µg
Concentration:	0.42 mg/ml

Immunohistochemistry Image:



Anti-NPR2 antibody IHC of human prostate. Immunohistochemistry of formalin-fixed, paraffin-embedded tissue after heat-induced antigen retrieval. Antibody LS-B5483 concentration 5 ug/ml.

ELISA Image:



Detection limit for recombinant GST tagged NPR2 is 3 ng/ml as a capture antibody.

Requested From:

Japan

Laboratory Reagent For In Vitro Research Use Only

Not for resale without prior written consent from LifeSpan BioSciences, Inc.

Created on 9/24/2014

© 2014 LifeSpan BioSciences