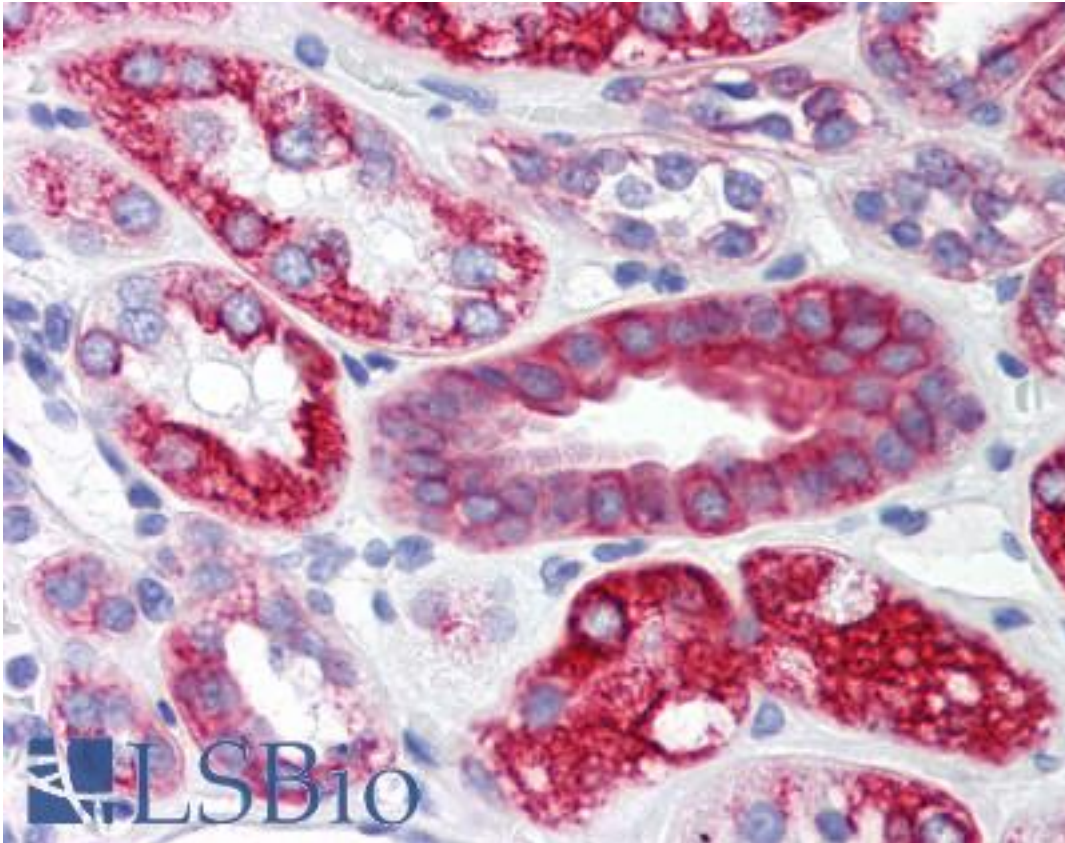


SCO2 Rabbit anti-Human Polyclonal (C-Terminus) Antibody - LS-B548 - LSBio

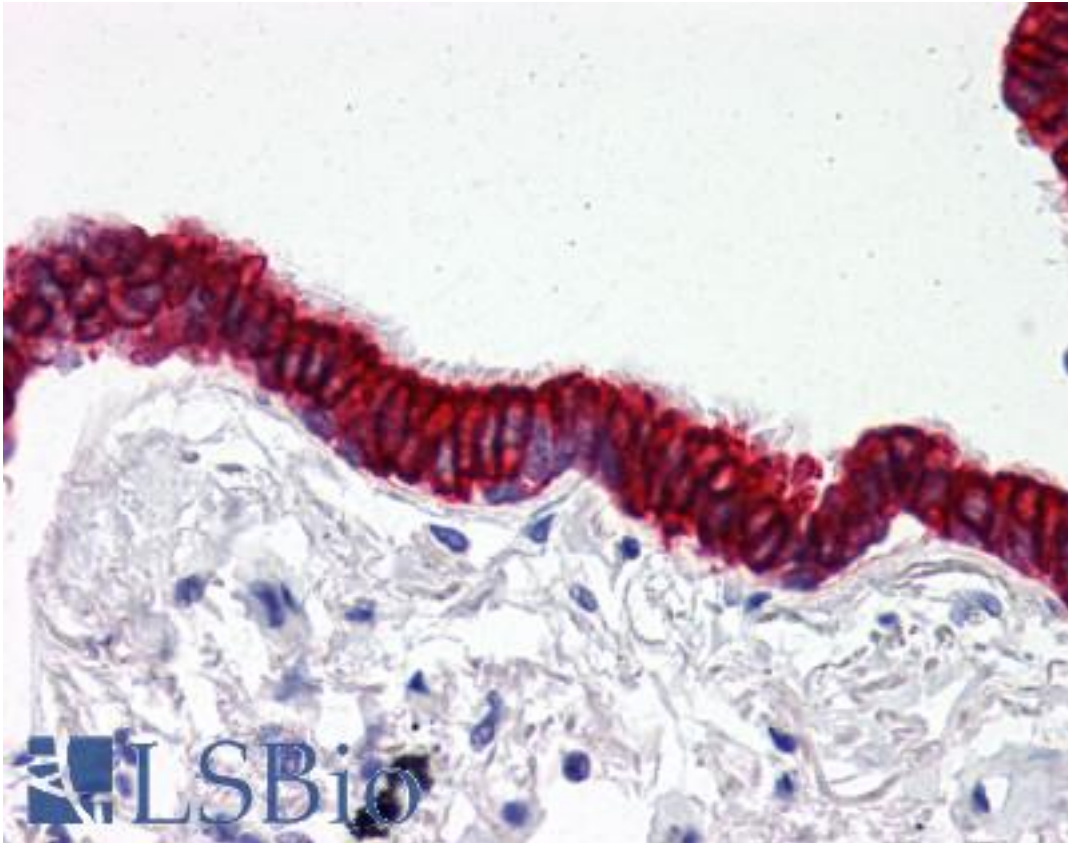
CatalogID:	LS-B548
Validation:	This antibody replaces catalog number LS-C19681. It has been validated for use in the following assays: IHC.
Target:	SCO2 cytochrome c oxidase assembly protein
Synonyms:	SCO2 Antibody, SCO1L Antibody
Host	SCO2 antibody was produced in Rabbit
Clonality:	Polyclonal
Immunogen Species:	SCO2 antibody was raised against Human
Antigen Type:	Synthetic peptide
Immunogen:	SCO2 antibody was raised against synthetic peptide from human SCO2.
Specificity:	19 amino acid peptide from near the carboxy terminus of human SCO2.
Epitope:	C-Terminus
Reactivity:	Human
Purification:	Purified
Presentation:	PBS, 0.02% sodium azide.
Recommended Storage:	Short term 4°C, long term aliquot and store at -20°C, avoid freeze thaw cycles. Store undiluted.
Usage Summary:	Immunohistochemistry: LS-B548 was validated for use in immunohistochemistry on a panel of 21 formalin-fixed, paraffin-embedded (FFPE) human tissues after heat induced antigen retrieval in pH 6.0 citrate buffer. After incubation with the primary antibody, slides were incubated with biotinylated secondary antibody, followed by alkaline phosphatase-streptavidin and chromogen. The stained slides were evaluated by a pathologist to confirm staining specificity. The optimal working concentration for LS-B548 was determined to be 2.5 ug/ml.
Uses:	IHC - Paraffin (2.5 µg/ml), Western blot (Optimal dilution to be determined by the researcher)
Size:	50 µg
Concentration:	1 mg/ml

Immunohistochemistry Image:



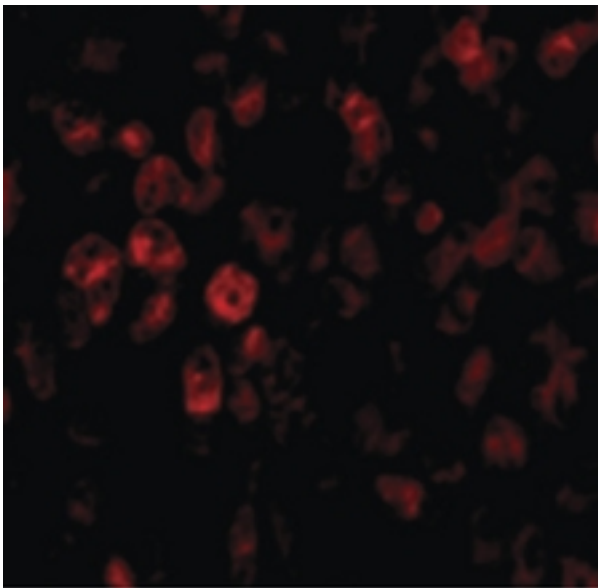
Anti-SCO2 antibody IHC of human kidney. Immunohistochemistry of formalin-fixed, paraffin-embedded tissue after heat-induced antigen retrieval. Antibody LS-B548 concentration 5 ug/ml.

Immunohistochemistry Image:



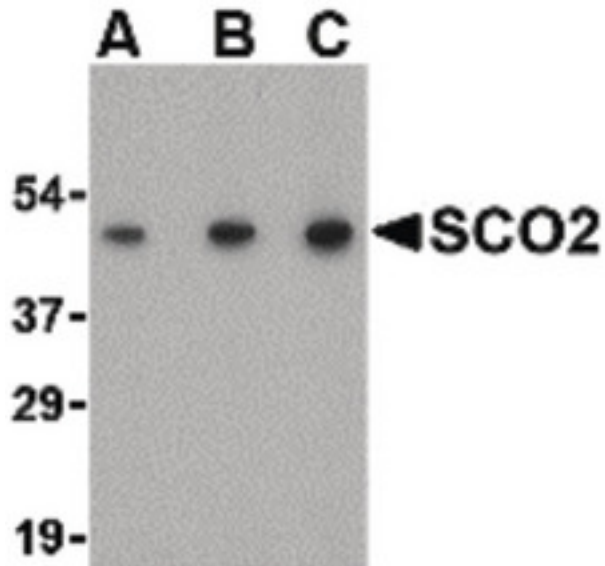
Anti-SCO2 antibody IHC of human lung, respiratory epithelium. Immunohistochemistry of formalin-fixed, paraffin-embedded tissue after heat-induced antigen retrieval. Antibody LS-B548 concentration 5 ug/ml.

Immunofluorescence Image:



Immunofluorescence of SCO2 in Human Liver cells with SCO2 antibody at 20 ug/ml.

Western Blot Image:



Western blot of SCO2 in human liver tissue lysate with SCO2 antibody at (A) 0.5, (B) 1 and (C) 2 ug/ml.

Requested From:

Japan

Laboratory Reagent For In Vitro Research Use Only

Not for resale without prior written consent from LifeSpan BioSciences, Inc.

Created on 9/24/2014

© 2014 LifeSpan BioSciences