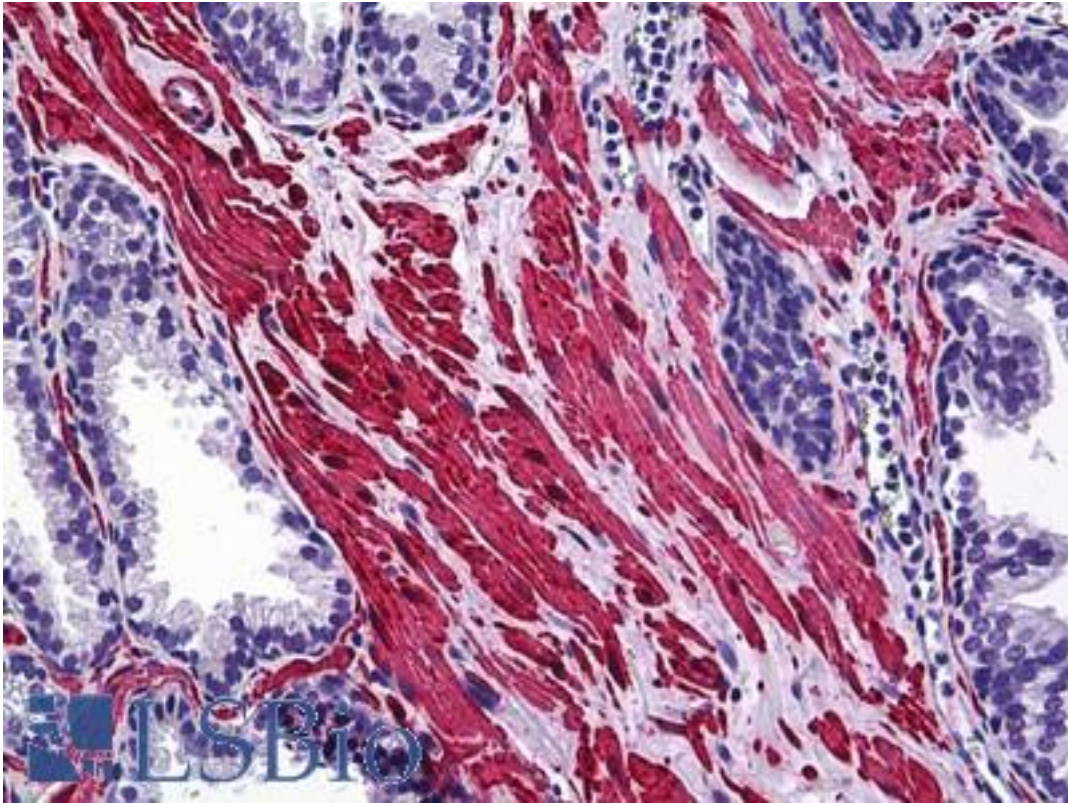


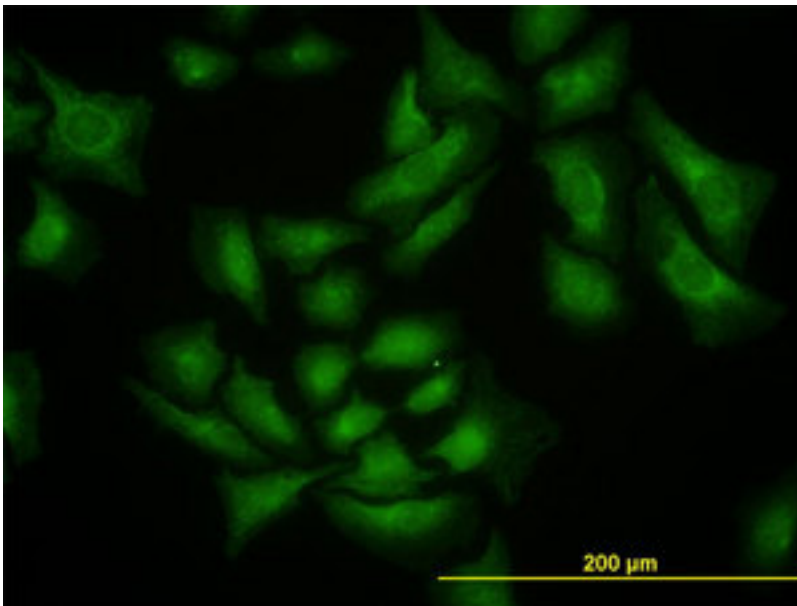
SMURF1 Mouse anti-Human Monoclonal (1D7) Antibody - LS-B5471 - LSBio	
<b>CatalogID:</b>	LS-B5471
<b>Validation:</b>	This antibody replaces catalog number LS-C133795. It has been validated for use in the following assays: IHC-P.
<b>Target:</b>	SMAD specific E3 ubiquitin protein ligase 1 (SMURF1)
<b>Synonyms:</b>	SMURF1 Antibody, E3 ubiquitin ligase SMURF1 Antibody, KIAA1625 Antibody, HSMURF1 Antibody
<b>Host</b>	SMURF1 antibody was produced in Mouse
<b>Clonality:</b>	Monoclonal
<b>Isotype:</b>	IgG2a,k
<b>Clone Name:</b>	1D7
<b>Immunogen Species:</b>	SMURF1 antibody was raised against Human
<b>Immunogen:</b>	SMURF1 antibody was raised against sMURF1 (NP_065162, 165 a.a. ~ 269 a.a) partial recombinant protein with GST tag. MW of the GST tag alone is 26 KDa.
<b>Specificity:</b>	Human SMURF1
<b>Reactivity:</b>	Human, Mouse
<b>Purification:</b>	Protein A purified
<b>Presentation:</b>	PBS, pH 7.4.
<b>Recommended Storage:</b>	Short term 4°C, long term aliquot and store at -20°C, avoid freeze thaw cycles.
<b>Usage Summary:</b>	Immunohistochemistry: Formalin-fixed paraffin-embedded sections. Sandwich ELISA: Recombinant protein. Western Blot: Cell lysate, Cell lysate, Cell lysate, Transfected lysate, Recombinant protein.
<b>Uses:</b>	IHC - Paraffin (5 µg/ml), Immunofluorescence (10 µg/ml), Western blot, Immunoprecipitation, ELISA (Optimal dilution to be determined by the researcher)
<b>Size:</b>	50 µg
<b>Concentration:</b>	0.35 mg/ml

**Immunohistochemistry Image:**



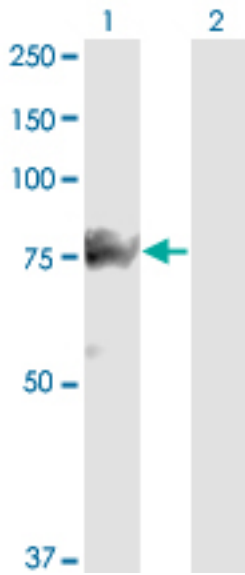
Anti-SMURF1 antibody IHC of human prostate. Immunohistochemistry of formalin-fixed, paraffin-embedded tissue after heat-induced antigen retrieval. Antibody LS-B5471 concentration 5 ug/ml.

**Immunofluorescence Image:**



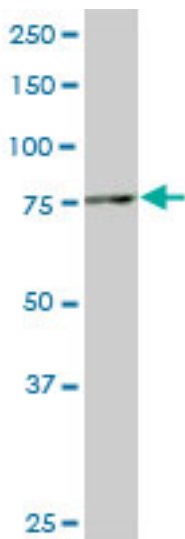
Immunofluorescence of monoclonal antibody to SMURF1 on HeLa cell. [antibody concentration 10 ug/ml]

**Western Blot Image:**



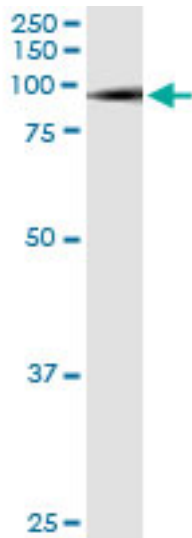
Western blot of SMURF1 expression in transfected 293T cell line by SMURF1 monoclonal antibody, clone 1D7.

**Western Blot Image:**



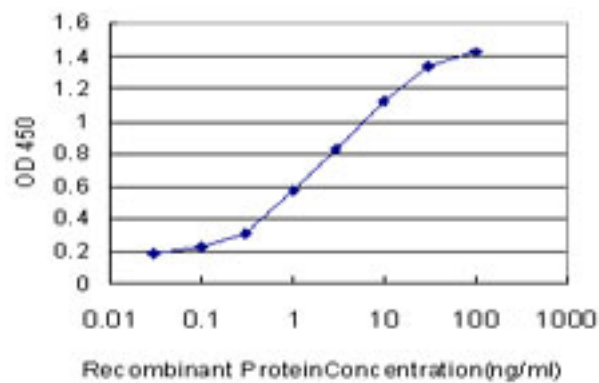
Western blot of SMURF1 expression in Raw 264.7 cells with SMURF1 monoclonal antibody, clone 1D7.

**Immunoprecipitation Image:**



Immunoprecipitation of SMURF1 transfected lysate using anti-SMURF1 monoclonal antibody and Protein A Magnetic Bead.

**ELISA Image:**



Detection limit for recombinant GST tagged SMURF1 is approximately 0.1 ng/ml as a capture antibody.

**Requested From:**

Japan

Laboratory Reagent For In Vitro Research Use Only

Not for resale without prior written consent from LifeSpan BioSciences, Inc.

Created on 9/24/2014

© 2014 LifeSpan BioSciences