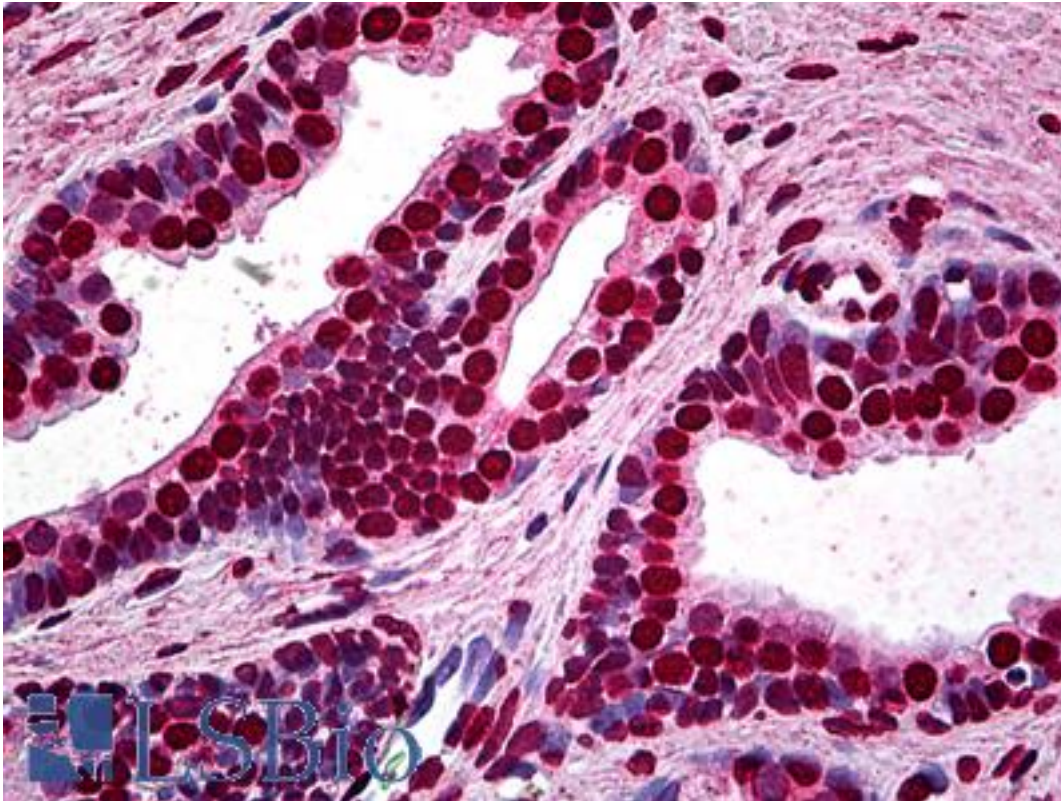


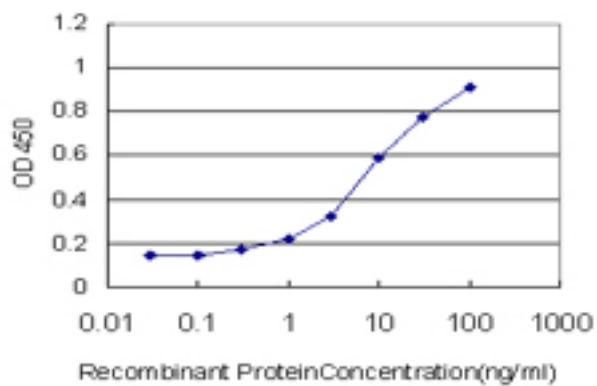
MEF2A / MEF2 Mouse anti-Human Monoclonal (1D11) Antibody - LS-B5470 - LSBio	
CatalogID:	LS-B5470
Validation:	This antibody replaces catalog number LS-C133314. It has been validated for use in the following assays: IHC-P.
Target:	myocyte enhancer factor 2A (MEF2A)
Synonyms:	MEF2A Antibody, ADCAD1 Antibody, RSRFC9 Antibody, Mef2 Antibody, Myocyte enhancer factor 2A Antibody, RSRFC4 Antibody
Host	MEF2A antibody was produced in Mouse
Clonality:	Monoclonal
Isotype:	IgG2b,k
Clone Name:	1D11
Immunogen Species:	MEF2A / MEF2 antibody was raised against Human
Immunogen:	MEF2A / MEF2 antibody was raised against mEF2A (AAH13437, 71 a.a. ~ 170 a.a) partial recombinant protein with GST tag. MW of the GST tag alone is 26 KDa.
Specificity:	Human MEF2A
Reactivity:	Human
Purification:	Protein A purified
Presentation:	PBS, pH 7.2. Sourced in Ascites.
Recommended Storage:	Short term 4°C, long term aliquot and store at -20°C, avoid freeze thaw cycles.
Usage Summary:	Immunohistochemistry: Formalin-fixed paraffin-embedded sections. Sandwich ELISA: Recombinant protein. Western blot with the recombinant protein used as the immunogen.
Uses:	IHC - Paraffin (2.5 µg/ml), Western blot, ELISA (Optimal dilution to be determined by the researcher)
Size:	50 µg
Concentration:	0.31 mg/ml

Immunohistochemistry Image:



Anti-MEF2A antibody IHC of human prostate. Immunohistochemistry of formalin-fixed, paraffin-embedded tissue after heat-induced antigen retrieval. Antibody LS-B5470 concentration 2.5 ug/ml.

ELISA Image:



Detection limit for recombinant GST tagged MEF2A is approximately 0.3 ng/ml as a capture antibody.

Requested From:

Japan

Laboratory Reagent For In Vitro Research Use Only

Not for resale without prior written consent from LifeSpan BioSciences, Inc.

Created on 9/24/2014

© 2014 LifeSpan BioSciences