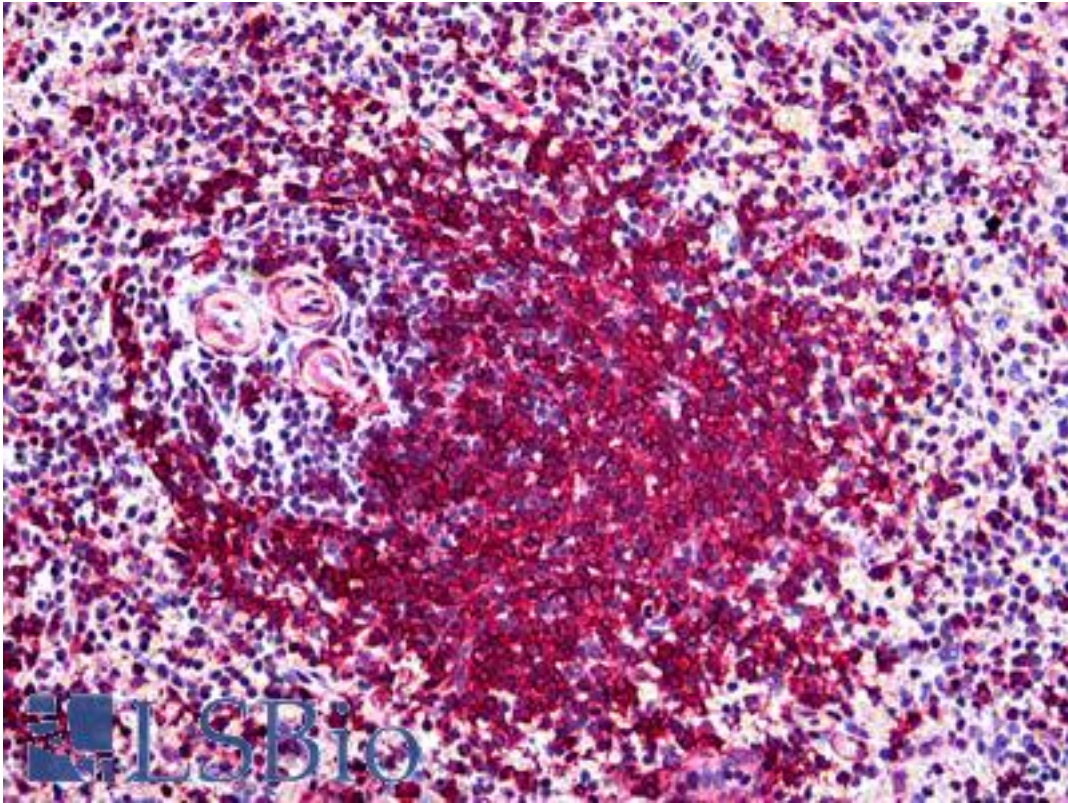


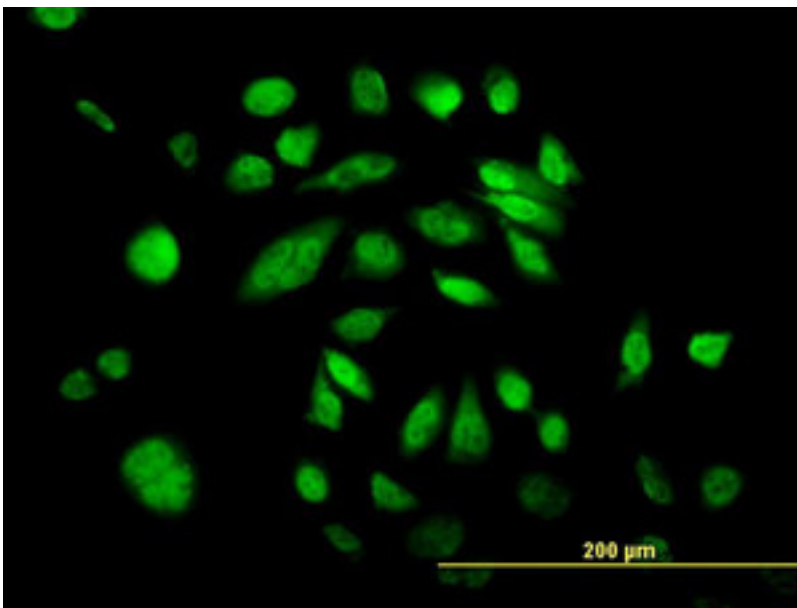
POLK Mouse anti-Human Monoclonal (6F2) Antibody - LS-B5464 - LSBio	
<b>CatalogID:</b>	LS-B5464
<b>Validation:</b>	This antibody replaces catalog number LS-C133757. It has been validated for use in the following assays: IHC-P.
<b>Target:</b>	polymerase (DNA directed) kappa (POLK)
<b>Synonyms:</b>	POLK Antibody, DINP Antibody, DNA polymerase kappa Antibody, DINB1 Antibody, DINB protein Antibody
<b>Host</b>	POLK antibody was produced in Mouse
<b>Clonality:</b>	Monoclonal
<b>Isotype:</b>	IgG1,k
<b>Clone Name:</b>	6F2
<b>Immunogen Species:</b>	POLK antibody was raised against Human
<b>Immunogen:</b>	POLK antibody was raised against pOLK (AAH50718, 1 a.a. ~ 473 a.a) full length recombinant protein with GST tag. MW of the GST tag alone is 26 KDa.
<b>Specificity:</b>	Human POLK
<b>Reactivity:</b>	Human
<b>Purification:</b>	Protein A purified
<b>Presentation:</b>	PBS, pH 7.2. Sourced in Ascites.
<b>Recommended Storage:</b>	Store at -20°C or lower. Aliquot to avoid repeated freezing and thawing.
<b>Usage Summary:</b>	Immunohistochemistry: Formalin-fixed paraffin-embedded sections. RNAi Knockdown: Antibody validated. Sandwich ELISA: Recombinant protein. Western Blot: Cell lysate, Transfected lysate, Recombinant protein.
<b>Uses:</b>	IHC - Paraffin (5 µg/ml), Immunofluorescence (10 µg/ml), Western blot, ELISA (Optimal dilution to be determined by the researcher)
<b>Size:</b>	50 µg
<b>Concentration:</b>	0.5 mg/ml

**Immunohistochemistry Image:**



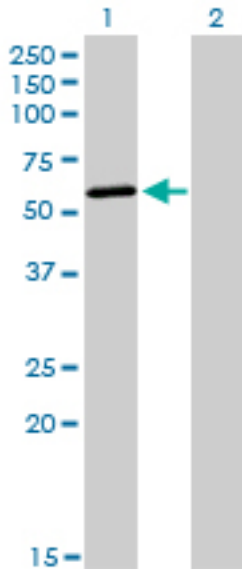
Anti-POLK antibody IHC of human spleen. Immunohistochemistry of formalin-fixed, paraffin-embedded tissue after heat-induced antigen retrieval. Antibody LS-B5464 concentration 5 ug/ml.

**Immunofluorescence Image:**



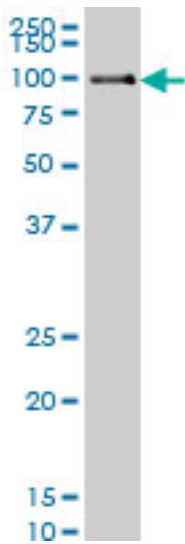
Immunofluorescence of monoclonal antibody to POLK on HeLa cell. [antibody concentration 10 ug/ml]

**Western Blot Image:**



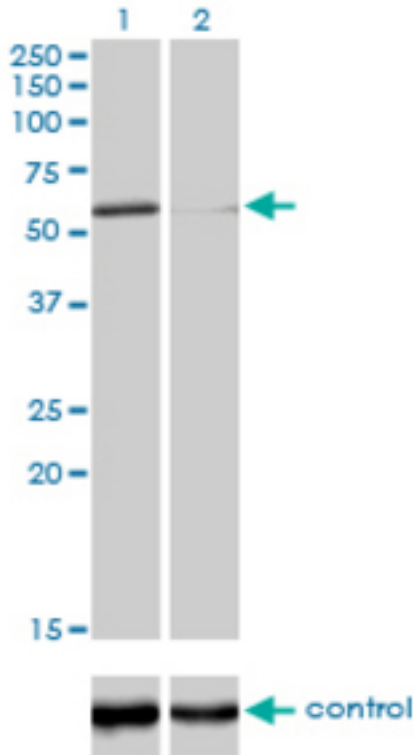
Western blot of POLK expression in transfected 293T cell line by POLK monoclonal antibody, clone 6F2.

**Western Blot Image:**



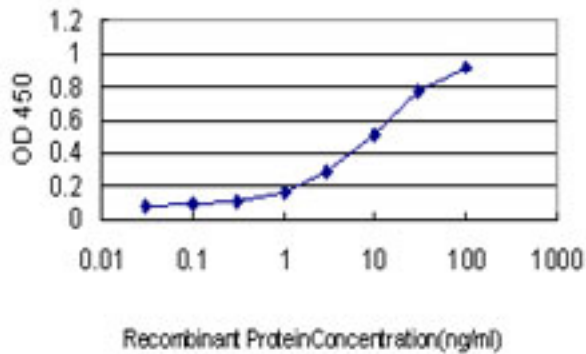
Western blot of POLK expression in HeLa nuclear extracts by POLK monoclonal antibody, clone 6F2.

**RNA interference Image:**



Western blot of POLK over-expressed 293 cell line, cotransfected with POLK Validated Chimera RNAi (Lane 2) or non-transfected control (Lane 1). Blot probed with POLK monoclonal antibody, clone 6F2. GAPDH (36.1 kD) used as control.

**ELISA Image:**



Detection limit for recombinant GST tagged POLK is approximately 0.3 ng/ml as a capture antibody.

Requested From:

Japan

Laboratory Reagent For In Vitro Research Use Only

Not for resale without prior written consent from LifeSpan BioSciences, Inc.

Created on 9/24/2014

© 2014 LifeSpan BioSciences