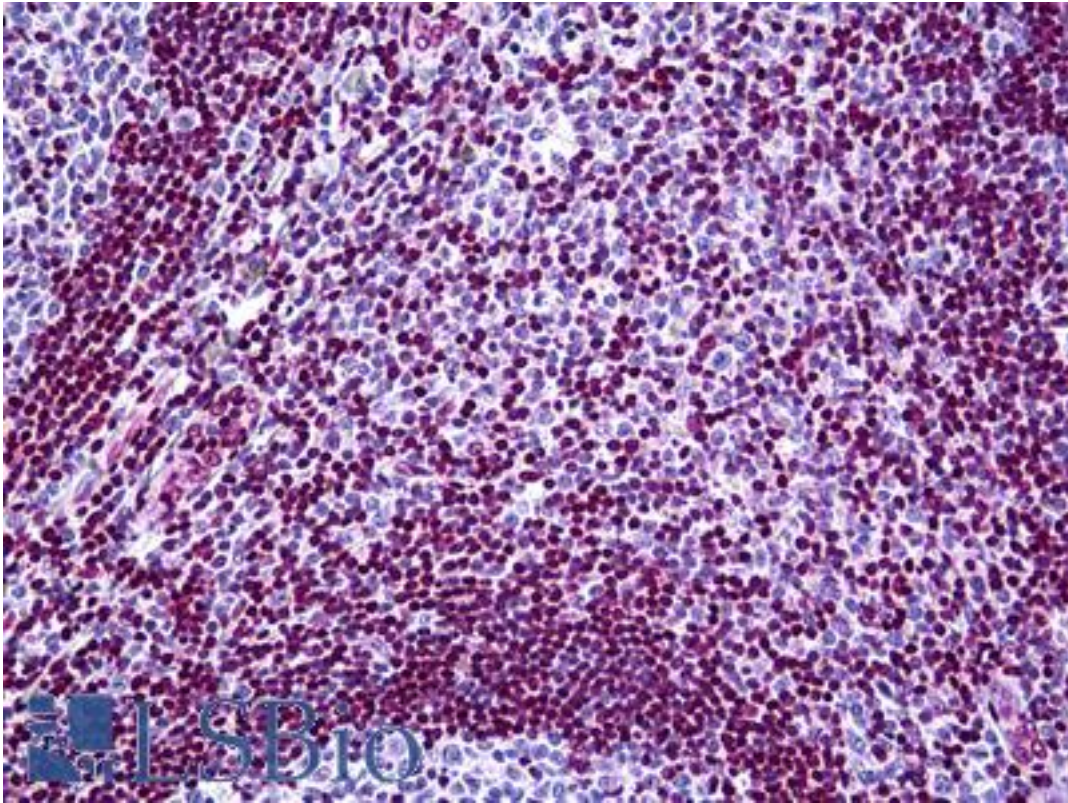


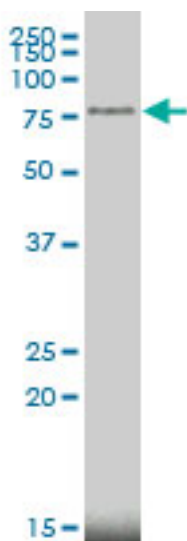
MECP2 Mouse anti-Human Monoclonal (4B6) Antibody - LS-B5462 - LSBio	
<b>CatalogID:</b>	LS-B5462
<b>Validation:</b>	This antibody replaces catalog number LS-C133310. It has been validated for use in the following assays: IHC-P.
<b>Target:</b>	methyl CpG binding protein 2 (Rett syndrome) (MECP2)
<b>Synonyms:</b>	MECP2 Antibody, AUTSX3 Antibody, Methyl-CpG-binding protein 2 Antibody, MRX16 Antibody, MRX79 Antibody, MRXSL Antibody, RTT Antibody, RTS Antibody, MeCp-2 protein Antibody, RS Antibody, MRXS13 Antibody, PPMX Antibody
<b>Host</b>	MECP2 antibody was produced in Mouse
<b>Clonality:</b>	Monoclonal
<b>Isotype:</b>	IgG2a,k
<b>Clone Name:</b>	4B6
<b>Immunogen Species:</b>	MECP2 antibody was raised against Human
<b>Immunogen:</b>	MECP2 antibody was raised against mECP2 (AAH11612, 81 a.a. ~ 170 a.a) partial recombinant protein with GST tag. MW of the GST tag alone is 26 KDa.
<b>Specificity:</b>	Human MeCP2
<b>Reactivity:</b>	Human, Mouse, Rat
<b>Purification:</b>	Protein A purified
<b>Presentation:</b>	PBS, pH 7.4.
<b>Recommended Storage:</b>	Short term 4°C, long term aliquot and store at -20°C, avoid freeze thaw cycles.
<b>Usage Summary:</b>	Immunohistochemistry: Formalin-fixed paraffin-embedded sections. Sandwich ELISA: Recombinant protein. Western Blot: Western blot using tissue lysates, cell lysates and the recombinant protein used as the immunogen.
<b>Uses:</b>	IHC - Paraffin (5 µg/ml), Western blot (1:500 - 1:1000), ELISA (Optimal dilution to be determined by the researcher)
<b>Size:</b>	50 µg
<b>Concentration:</b>	0.43 mg/ml

**Immunohistochemistry Image:**



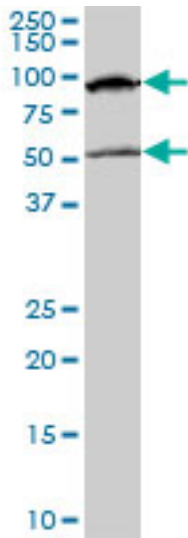
Anti-MECP2 antibody IHC of human tonsil. Immunohistochemistry of formalin-fixed, paraffin-embedded tissue after heat-induced antigen retrieval. Antibody LS-B5462 concentration 5 ug/ml.

**Western Blot Image:**



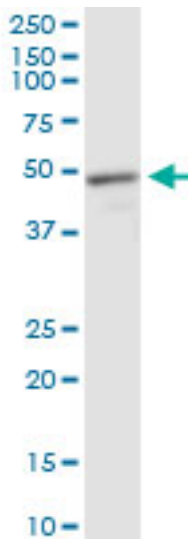
MECP2 monoclonal antibody clone 4B6 Western blot of MECP2 expression in MCF-7.

**Western Blot Image:**



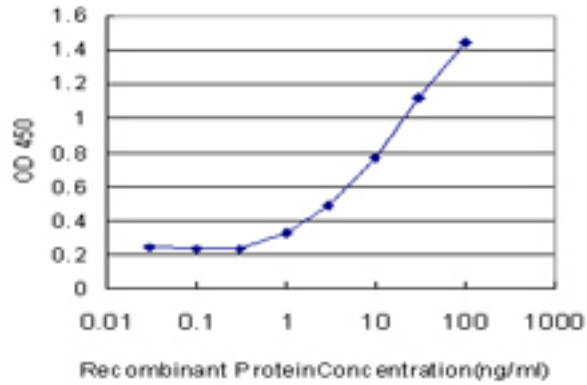
MECP2 monoclonal antibody clone 4B6. Western blot of MECP2 expression in NIH/3T3.

**Western Blot Image:**



MECP2 monoclonal antibody clone 4B6. Western blot of MECP2 expression in rat muscle.

**ELISA Image:**



Detection limit for recombinant GST tagged MECP2 is approximately 1 ng/ml as a capture antibody.

**Requested From:**

Japan

Laboratory Reagent For In Vitro Research Use Only

Not for resale without prior written consent from LifeSpan BioSciences, Inc.

Created on 9/24/2014

© 2014 LifeSpan BioSciences