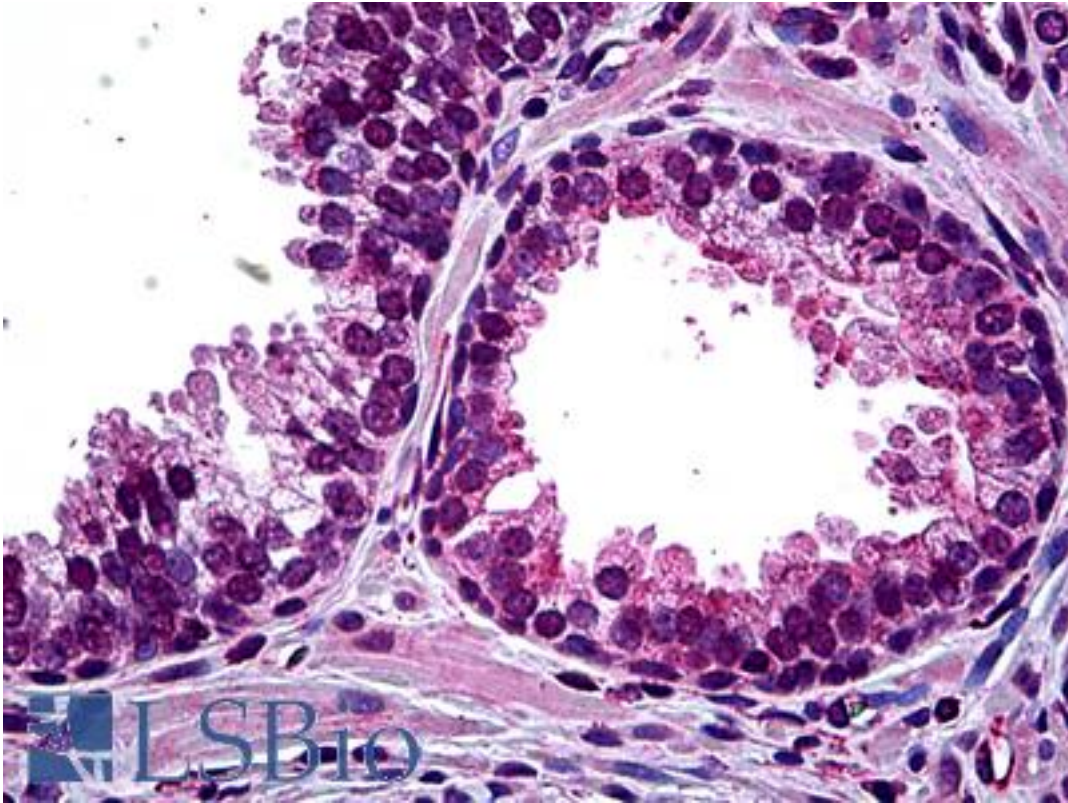


HIPK2 Mouse anti-Human Monoclonal (1F10) Antibody - LS-B5460 - LSBio

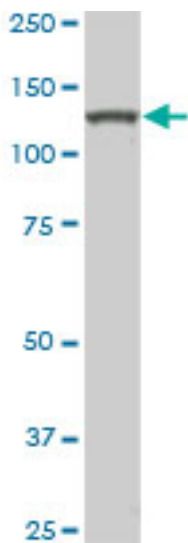
CatalogID:	LS-B5460
Validation:	This antibody replaces catalog number LS-C133736. It has been validated for use in the following assays: IHC-P.
Target:	homeodomain interacting protein kinase 2 (HIPK2)
Synonyms:	HIPK2 Antibody, HHIPk2 Antibody, PRO0593 Antibody, Stank Antibody
Family / Subfamily:	Protein Kinase / MNB/DYRK
Host	HIPK2 antibody was produced in Mouse
Clonality:	Monoclonal
Isotype:	IgG2a,k
Clone Name:	1F10
Immunogen Species:	HIPK2 antibody was raised against Human
Immunogen:	HIPK2 antibody was raised against hIPK2 (AAG41236, 961 a.a. ~ 1065 a.a) partial recombinant protein with GST tag. MW of the GST tag alone is 26 KDa.
Specificity:	Human HIPK2
Reactivity:	Human, Rat
Purification:	Protein A purified
Presentation:	PBS, pH 7.2. Sourced in Ascites.
Recommended Storage:	Short term 4°C, long term aliquot and store at -20°C, avoid freeze thaw cycles.
Usage Summary:	Immunohistochemistry: Formalin-fixed paraffin-embedded sections. Sandwich ELISA: Recombinant protein. Western Blot: Cell lysate, Cell lysate.
Uses:	IHC - Paraffin (5 µg/ml), Western blot (1:500 - 1:1000), ELISA (Optimal dilution to be determined by the researcher)
Size:	50 µg
Concentration:	0.5 mg/ml

Immunohistochemistry Image:



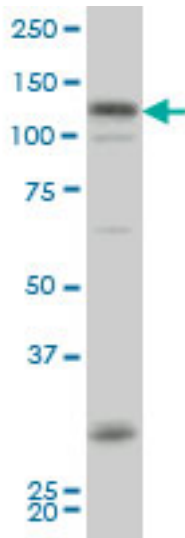
Anti-HIPK2 antibody IHC of human prostate. Immunohistochemistry of formalin-fixed, paraffin-embedded tissue after heat-induced antigen retrieval. Antibody LS-B5460 concentration 5 ug/ml.

Western Blot Image:



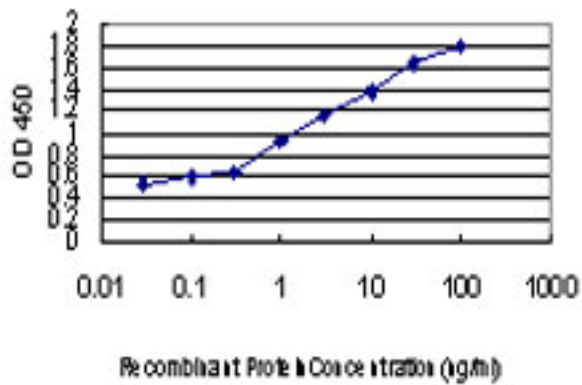
Western blot of HIPK2 expression in RIN-m5F cells with HIPK2 monoclonal antibody, clone 1F10.

Western Blot Image:



Western blot of HIPK2 expression in MES-SA/Dx5 cells with HIPK2 monoclonal antibody, clone 1F10.

ELISA Image:



Detection limit for recombinant GST tagged HIPK2 is approximately 0.1 ng/ml as a capture antibody.

Requested From:

Japan

Laboratory Reagent For In Vitro Research Use Only

Not for resale without prior written consent from LifeSpan BioSciences, Inc.

Created on 9/24/2014

© 2014 LifeSpan BioSciences