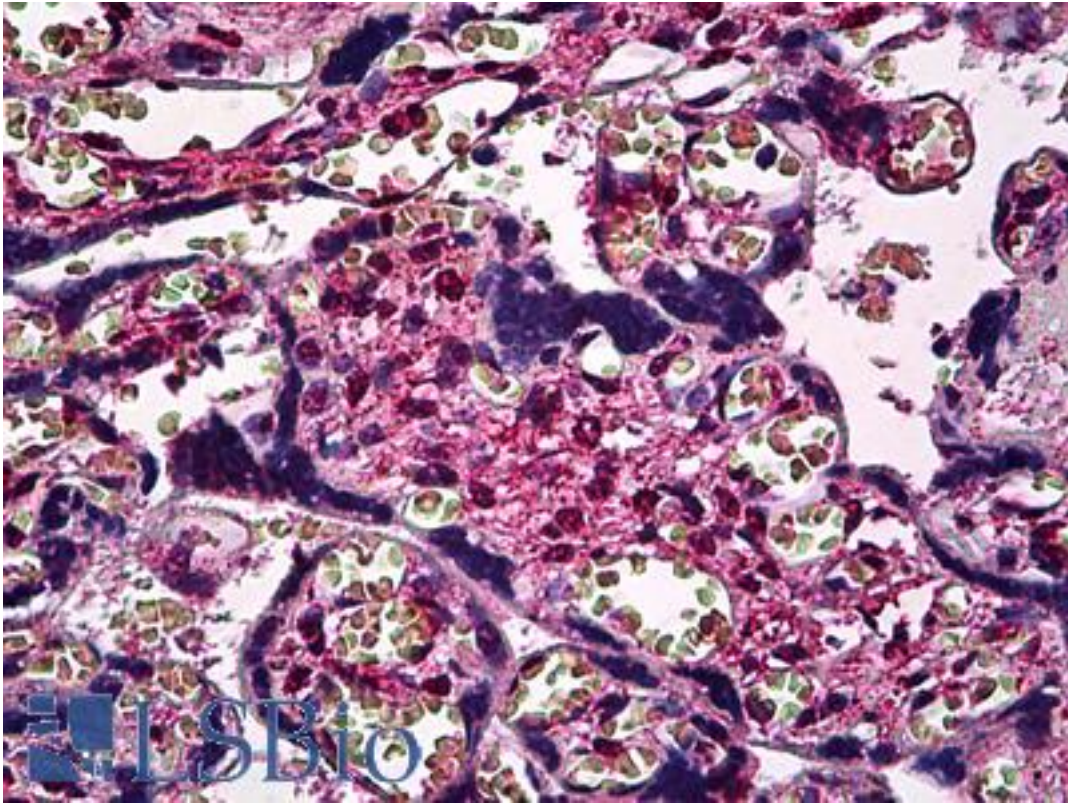


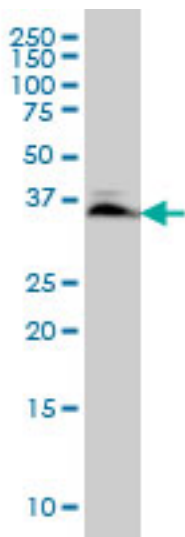
SMAD3 Mouse anti-Human Monoclonal (7F3) Antibody - LS-B5459 - LSBio	
<b>CatalogID:</b>	LS-B5459
<b>Validation:</b>	This antibody replaces catalog number LS-C133306. It has been validated for use in the following assays: IHC-P.
<b>Target:</b>	SMAD family member 3 (SMAD3)
<b>Synonyms:</b>	SMAD3 Antibody, HSPC193 Antibody, HMAD-3 Antibody, HsT17436 Antibody, LDS1C Antibody, LDS3 Antibody, Mad homolog JV15-2 Antibody, MAD3 Antibody, MADH3 Antibody, Mothers against DPP homolog 3 Antibody, JV15-2 Antibody, SMA- and MAD-related protein 3 Antibody, SMAD family member 3 Antibody, MAD homolog 3 Antibody, HSMAD3 Antibody, Mad protein homolog Antibody, SMAD 3 Antibody
<b>Host</b>	SMAD3 antibody was produced in Mouse
<b>Clonality:</b>	Monoclonal
<b>Isotype:</b>	IgG1,k
<b>Clone Name:</b>	7F3
<b>Immunogen Species:</b>	SMAD3 antibody was raised against Human
<b>Immunogen:</b>	SMAD3 antibody was raised against sMAD3 (NP_005893, 120 a.a. ~ 222 a.a) partial recombinant protein with GST tag. MW of the GST tag alone is 26 KDa.
<b>Specificity:</b>	Human SMAD3
<b>Reactivity:</b>	Human, Rat
<b>Purification:</b>	Protein A purified
<b>Presentation:</b>	PBS, pH 7.2
<b>Recommended Storage:</b>	Short term 4°C, long term aliquot and store at -20°C, avoid freeze thaw cycles.
<b>Usage Summary:</b>	Immunohistochemistry: Formalin-fixed paraffin-embedded sections. Sandwich ELISA: Recombinant protein. Western blot using tissue lysates, cell lysates and the recombinant protein used as the immunogen.
<b>Uses:</b>	IHC - Paraffin (2.5 µg/ml), Western blot, ELISA (Optimal dilution to be determined by the researcher)
<b>Size:</b>	50 µg
<b>Concentration:</b>	0.43 mg/ml

**Immunohistochemistry Image:**



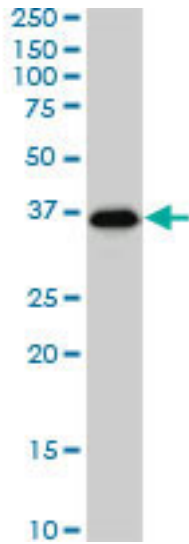
Anti-SMAD3 antibody IHC of human placenta. Immunohistochemistry of formalin-fixed, paraffin-embedded tissue after heat-induced antigen retrieval. Antibody LS-B5459 concentration 2.5 ug/ml.

**Western Blot Image:**



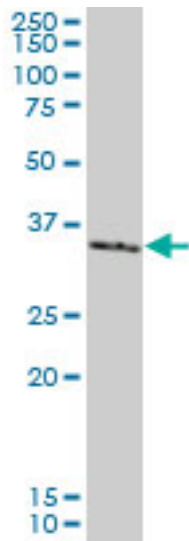
SMAD3 monoclonal antibody clone 7F3. Western blot of SMAD3 expression in HeLa.

**Western Blot Image:**



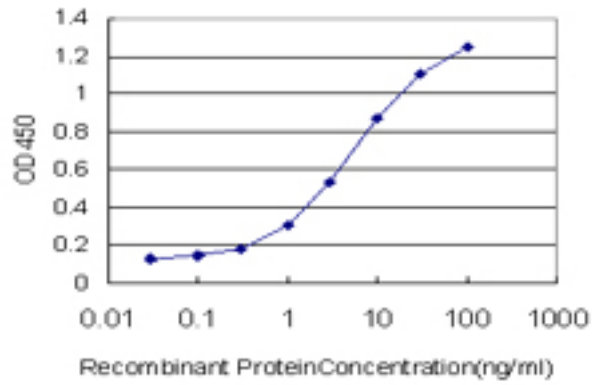
SMAD3 monoclonal antibody clone 7F3. Western blot of SMAD3 expression in Jurkat.

**Western Blot Image:**



SMAD3 monoclonal antibody clone 7F3. Western blot of SMAD3 expression in human colon.

**ELISA Image:**



Detection limit for recombinant GST tagged SMAD3 is approximately 0.1 ng/ml as a capture antibody.

**Requested From:**

Japan

Laboratory Reagent For In Vitro Research Use Only

Not for resale without prior written consent from LifeSpan BioSciences, Inc.

Created on 9/24/2014

© 2014 LifeSpan BioSciences