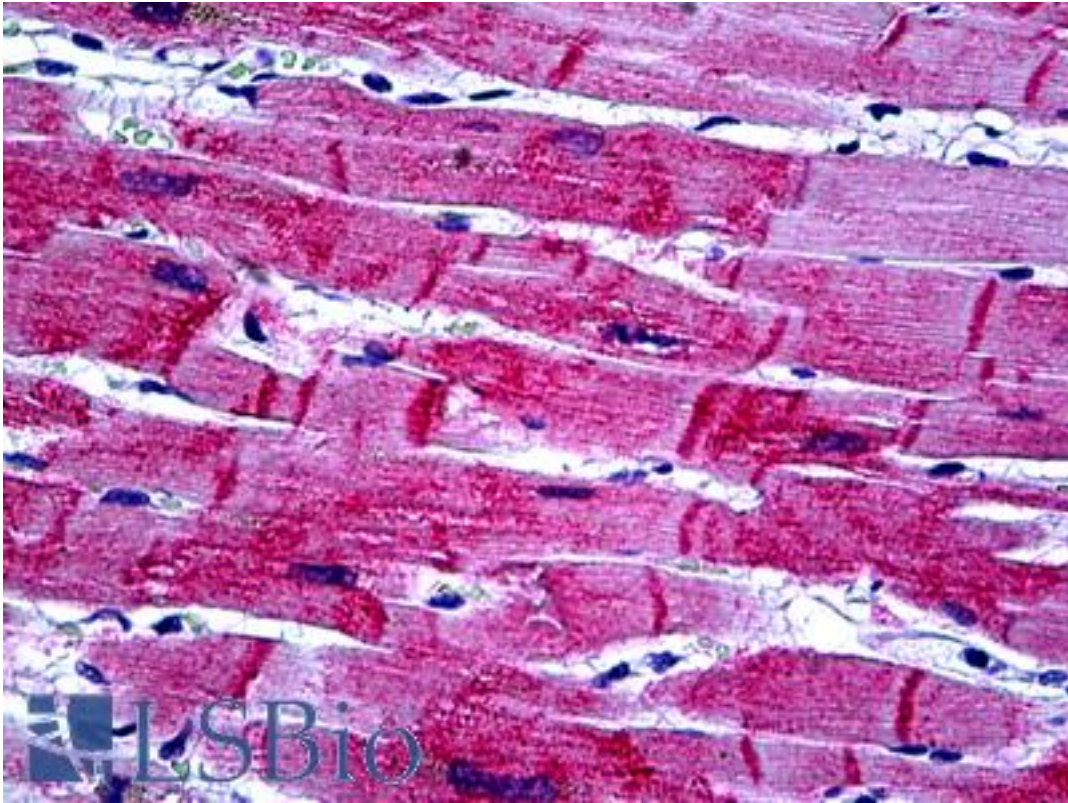


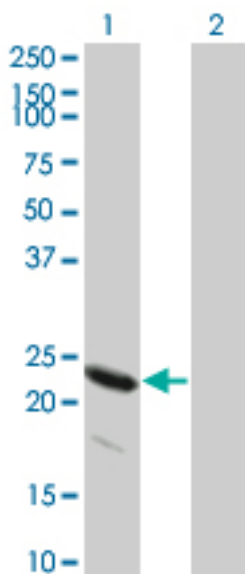
HSPB8 / H11 / HSP22 Mouse anti-Human Monoclonal (5B12) Antibody - LS-B5458 - LSBio	
<b>CatalogID:</b>	LS-B5458
<b>Validation:</b>	This antibody replaces catalog number LS-C133716. It has been validated for use in the following assays: IHC-P.
<b>Target:</b>	heat shock 22kDa protein 8 (HSPB8)
<b>Synonyms:</b>	HSPB8 Antibody, Alpha-crystallin C chain Antibody, CMT2L Antibody, Crystallin alpha c Antibody, DHMN2 Antibody, E2-induced gene 1 protein Antibody, CRYAC Antibody, E2IG1 Antibody, HMN2 Antibody, H11 Antibody, Heat shock 27kDa protein 8 Antibody, Heat shock protein beta-8 Antibody, Heat shock 22kDa protein 8 Antibody, HMN2A Antibody, HSP22 Antibody, Protein kinase H11 Antibody
<b>Family / Subfamily:</b>	Protein Kinase / H11
<b>Host</b>	HSPB8 antibody was produced in Mouse
<b>Clonality:</b>	Monoclonal
<b>Isotype:</b>	IgG2a,k
<b>Clone Name:</b>	5B12
<b>Immunogen Species:</b>	HSPB8 / H11 / HSP22 antibody was raised against Human
<b>Immunogen:</b>	HSPB8 / H11 / HSP22 antibody was raised against hSPB8 (NP_055180, 97 a.a. ~ 197 a.a) partial recombinant protein with GST tag. MW of the GST tag alone is 26 KDa.
<b>Specificity:</b>	HSPB8
<b>Reactivity:</b>	Human
<b>Purification:</b>	Protein A purified
<b>Presentation:</b>	PBS, pH 7.2. Sourced in Ascites.
<b>Recommended Storage:</b>	Short term 4°C, long term aliquot and store at -20°C, avoid freeze thaw cycles.
<b>Usage Summary:</b>	Immunohistochemistry: Formalin-fixed paraffin-embedded sections. Sandwich ELISA: Recombinant protein. Western Blot: Transfected lysate, Recombinant protein.
<b>Uses:</b>	IHC - Paraffin (5 µg/ml), Western blot (1:500 - 1:1000), ELISA (Optimal dilution to be determined by the researcher)
<b>Size:</b>	50 µg
<b>Concentration:</b>	0.29 mg/ml

**Immunohistochemistry Image:**



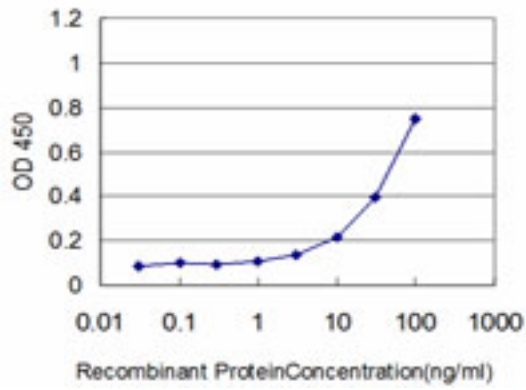
Anti-HSPB8 antibody IHC of human heart. Immunohistochemistry of formalin-fixed, paraffin-embedded tissue after heat-induced antigen retrieval. Antibody LS-B5458 concentration 5 ug/ml.

**Western Blot Image:**



Western blot of HSPB8 expression in transfected 293T cell line by HSPB8 monoclonal antibody, clone 5B12.

**ELISA Image:**



Detection limit for recombinant GST tagged HSPB8 is approximately 3 ng/ml as a capture antibody.

**Requested From:**

Japan

Laboratory Reagent For In Vitro Research Use Only

Not for resale without prior written consent from LifeSpan BioSciences, Inc.

Created on 9/24/2014

© 2014 LifeSpan BioSciences