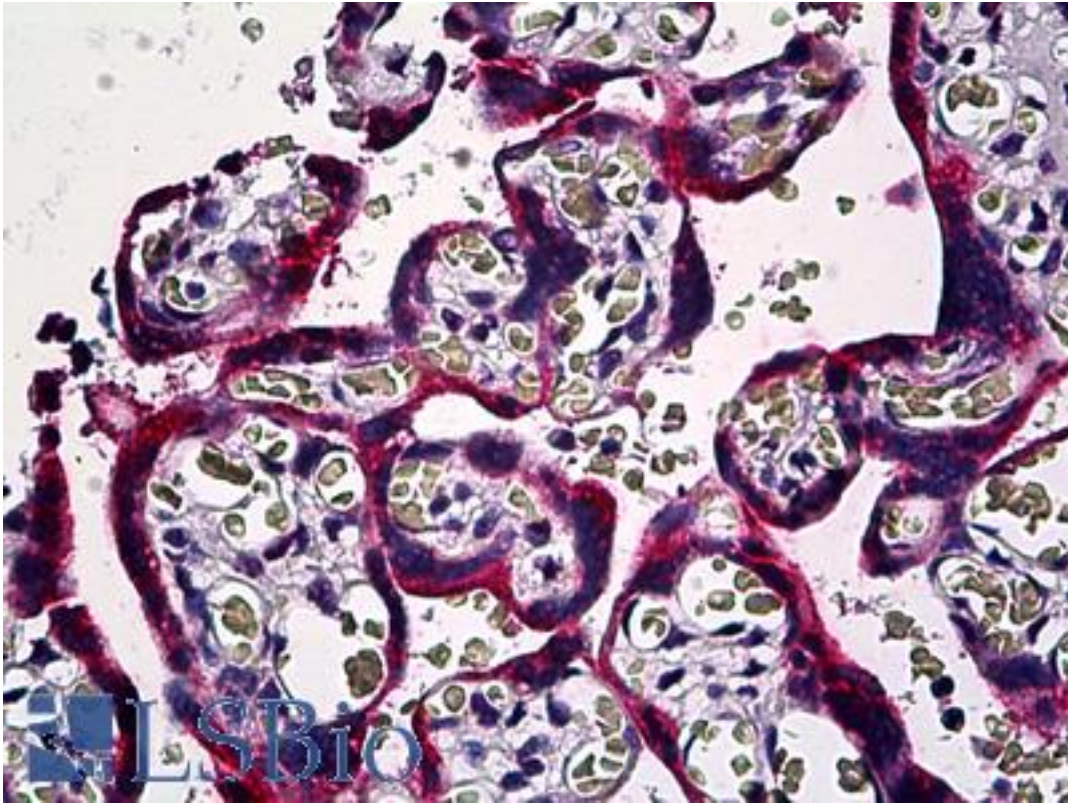


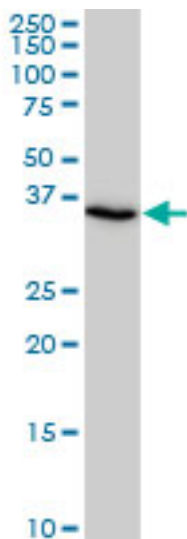
SMAD3 Mouse anti-Human Monoclonal (2C12) Antibody - LS-B5455 - LSBio	
CatalogID:	LS-B5455
Validation:	This antibody replaces catalog number LS-C133305. It has been validated for use in the following assays: IHC-P.
Target:	SMAD family member 3 (SMAD3)
Synonyms:	SMAD3 Antibody, HSPC193 Antibody, HMAD-3 Antibody, HsT17436 Antibody, LDS1C Antibody, LDS3 Antibody, Mad homolog JV15-2 Antibody, MAD3 Antibody, MADH3 Antibody, Mothers against DPP homolog 3 Antibody, JV15-2 Antibody, SMA- and MAD-related protein 3 Antibody, SMAD family member 3 Antibody, MAD homolog 3 Antibody, HSMAD3 Antibody, Mad protein homolog Antibody, SMAD 3 Antibody
Host	SMAD3 antibody was produced in Mouse
Clonality:	Monoclonal
Isotype:	IgG2a,k
Clone Name:	2C12
Immunogen Species:	SMAD3 antibody was raised against Human
Immunogen:	SMAD3 antibody was raised against sMAD3 (NP_005893, 120 a.a. ~ 222 a.a) partial recombinant protein with GST tag. MW of the GST tag alone is 26 KDa.
Specificity:	Human SMAD3
Reactivity:	Human
Purification:	Protein A purified
Presentation:	PBS, pH 7.2
Recommended Storage:	Short term 4°C, long term aliquot and store at -20°C, avoid freeze thaw cycles.
Usage Summary:	Immunohistochemistry: Formalin-fixed paraffin-embedded sections. Sandwich ELISA: Recombinant protein. Western Blot using tissue lysates, cell line lysates and the recombinant protein used as the immunogen.
Uses:	IHC - Paraffin (5 µg/ml), Western blot, ELISA (Optimal dilution to be determined by the researcher)
Size:	50 µg
Concentration:	1 mg/ml

Immunohistochemistry Image:



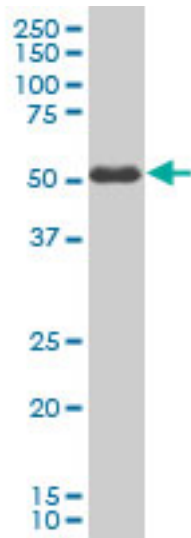
Anti-SMAD3 antibody IHC of human placenta. Immunohistochemistry of formalin-fixed, paraffin-embedded tissue after heat-induced antigen retrieval. Antibody LS-B5455 concentration 5 ug/ml.

Western Blot Image:



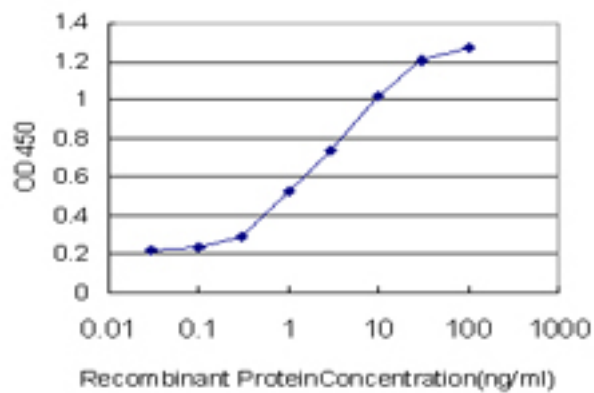
SMAD3 monoclonal antibody clone 2C12. Western blot of SMAD3 expression in U-2 OS.

Western Blot Image:



SMAD3 monoclonal antibody clone 2C12. Western blot of SMAD3 expression in human colon.

ELISA Image:



Detection limit for recombinant GST tagged SMAD3 is approximately 0.03 ng/ml as a capture antibody.

Requested From:

Japan

Laboratory Reagent For In Vitro Research Use Only

Not for resale without prior written consent from LifeSpan BioSciences, Inc.

Created on 9/24/2014

© 2014 LifeSpan BioSciences