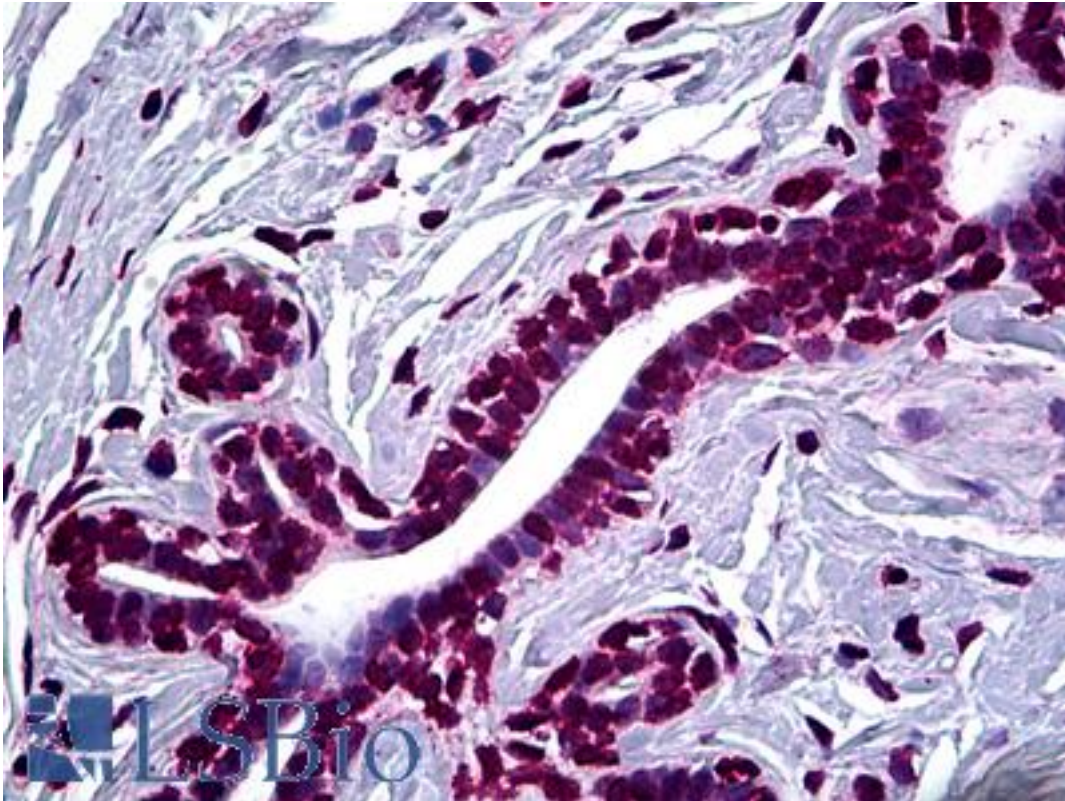


SMAD2 Mouse anti-Human Monoclonal (3G6) Antibody - LS-B5454 - LSBio

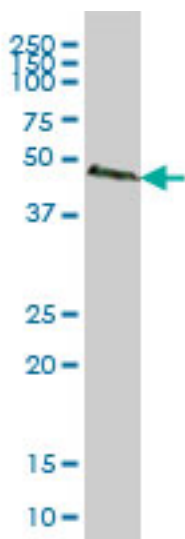
CatalogID:	LS-B5454
Validation:	This antibody replaces catalog number LS-C133303. It has been validated for use in the following assays: IHC-P.
Target:	SMAD family member 2 (SMAD2)
Synonyms:	SMAD2 Antibody, HMAD-2 Antibody, HSMAD2 Antibody, JV18-1 Antibody, Mad protein homolog smad2 Antibody, MADR2 Antibody, MADH2 Antibody, SMAD 2 Antibody, MAD homolog 2 Antibody, Mad-related protein 2 Antibody, JV18 Antibody, Mother against DPP homolog 2 Antibody, Mothers against DPP homolog 2 Antibody, Sma- and Mad-related protein 2 Antibody, SMAD family member 2 Antibody
Host	SMAD2 antibody was produced in Mouse
Clonality:	Monoclonal
Isotype:	IgG2b,k
Clone Name:	3G6
Immunogen Species:	SMAD2 antibody was raised against Human
Immunogen:	SMAD2 antibody was raised against sMAD2 (AAH25699, 181 a.a. ~ 280 a.a) partial recombinant protein with GST tag. MW of the GST tag alone is 26 KDa.
Specificity:	Human SMAD2
Reactivity:	Human
Purification:	Protein A purified
Presentation:	PBS, pH 7.2
Recommended Storage:	Short term 4°C, long term aliquot and store at -20°C, avoid freeze thaw cycles.
Usage Summary:	Immunohistochemistry: Formalin-fixed paraffin-embedded sections. Sandwich ELISA: Recombinant protein. Western Blot using cell lysates and the recombinant protein used as the immunogen.
Uses:	IHC - Paraffin (5 µg/ml), Western blot, ELISA (Optimal dilution to be determined by the researcher)
Size:	50 µg
Concentration:	0.5 mg/ml

Immunohistochemistry Image:



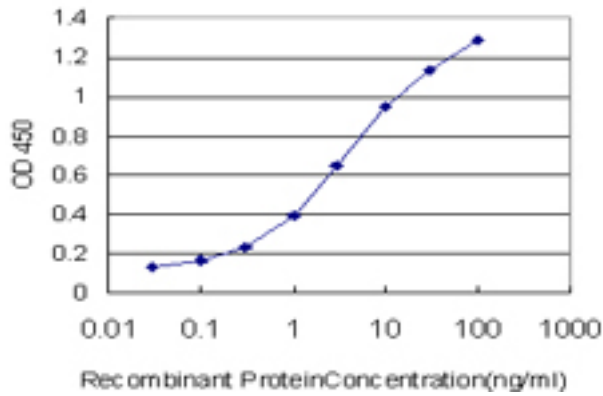
Anti-SMAD2 antibody IHC of human breast. Immunohistochemistry of formalin-fixed, paraffin-embedded tissue after heat-induced antigen retrieval. Antibody LS-B5454 concentration 5 ug/ml.

Western Blot Image:



SMAD2 monoclonal antibody clone 3G6 Western blot of SMAD2 expression in A-431.

ELISA Image:



Detection limit for recombinant GST tagged SMAD2 is approximately 0.1 ng/ml as a capture antibody.

Requested From:

Japan

Laboratory Reagent For In Vitro Research Use Only

Not for resale without prior written consent from LifeSpan BioSciences, Inc.

Created on 9/24/2014

© 2014 LifeSpan BioSciences