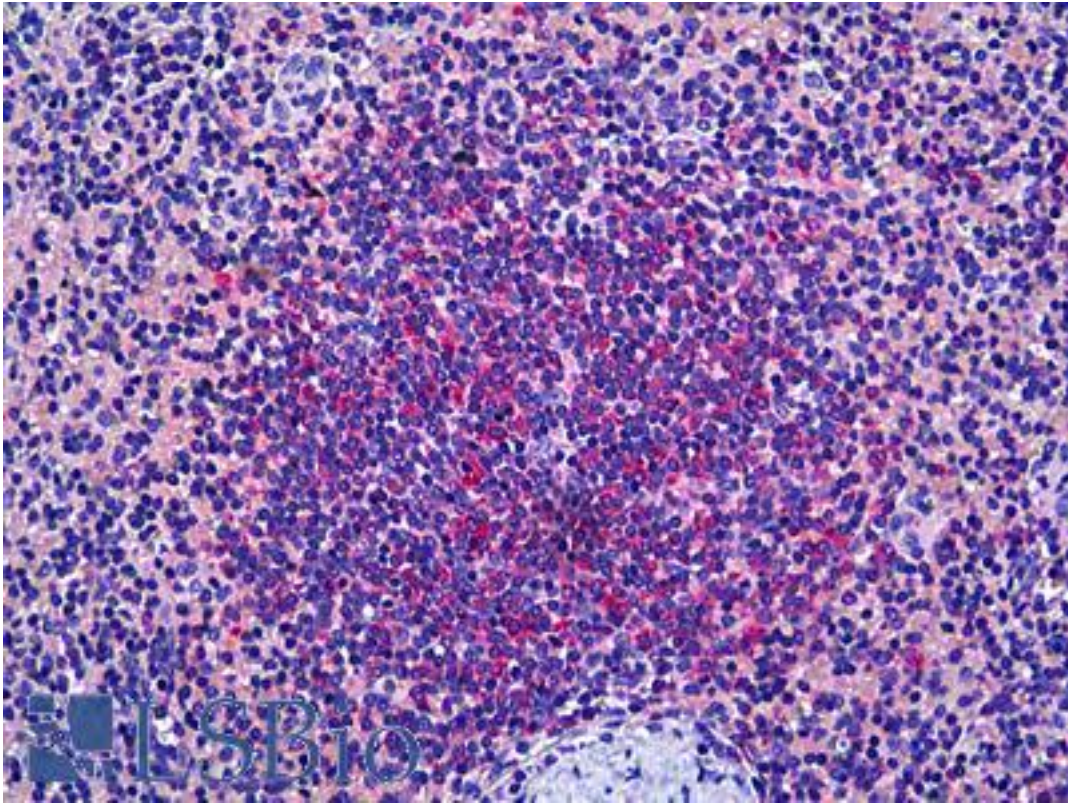


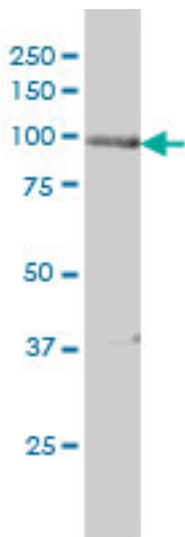
PRKD2 / PKD2 Mouse anti-Human Monoclonal (2E4) Antibody - LS-B5453 - LSBio	
CatalogID:	LS-B5453
Validation:	This antibody replaces catalog number LS-C133709. It has been validated for use in the following assays: IHC-P.
Target:	protein kinase D2 (PRKD2)
Synonyms:	PRKD2 Antibody, HSPC187 Antibody, NPKC-D2 Antibody, Protein kinase D2 Antibody, DKFZP586E0820 Antibody
Family / Subfamily:	Protein Kinase / PKD
Host	PRKD2 antibody was produced in Mouse
Clonality:	Monoclonal
Isotype:	IgG2b,k
Clone Name:	2E4
Immunogen Species:	PRKD2 / PKD2 antibody was raised against Human
Immunogen:	PRKD2 / PKD2 antibody was raised against pRKD2 (-, 1 a.a. ~ 110 a.a) partial recombinant protein with GST tag. MW of the GST tag alone is 26 KDa.
Specificity:	Human PRKD2
Reactivity:	Human
Purification:	Protein A purified
Presentation:	PBS, pH 7.2. Sourced in Ascites.
Recommended Storage:	Short term 4°C, long term aliquot and store at -20°C, avoid freeze thaw cycles.
Usage Summary:	Immunohistochemistry: Formalin-fixed paraffin-embedded sections. Sandwich ELISA: Recombinant protein. Western Blot: Cell lysate, Recombinant protein.
Uses:	IHC - Paraffin (10 µg/ml), Western blot, ELISA (Optimal dilution to be determined by the researcher)
Size:	50 µg
Concentration:	0.5 mg/ml

Immunohistochemistry Image:



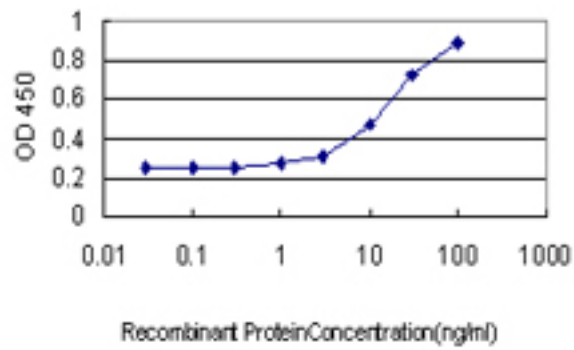
Anti-PRKD2 antibody IHC of human spleen. Immunohistochemistry of formalin-fixed, paraffin-embedded tissue after heat-induced antigen retrieval. Antibody LS-B5453 concentration 10 ug/ml.

Western Blot Image:



Western blot of PRKD2 expression in HeLa cells with PRKD2 monoclonal antibody, clone 2E4.

ELISA Image:



Detection limit for recombinant GST tagged PRKD2 is approximately 1 ng/ml as a capture antibody.

Requested From:

Japan

Laboratory Reagent For In Vitro Research Use Only

Not for resale without prior written consent from LifeSpan BioSciences, Inc.

Created on 9/24/2014

© 2014 LifeSpan BioSciences