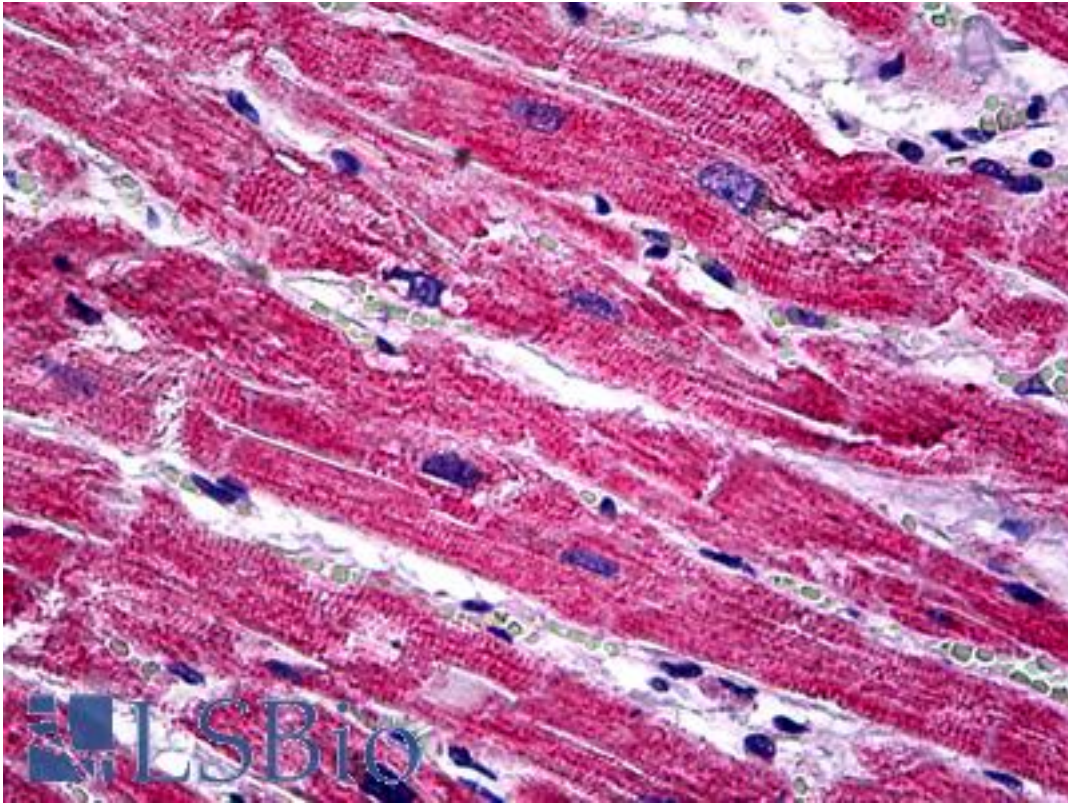


**SPRY1 / Sprouty 1 Mouse anti-Human Monoclonal (3H4) Antibody - LS-B5441 - LSBio**

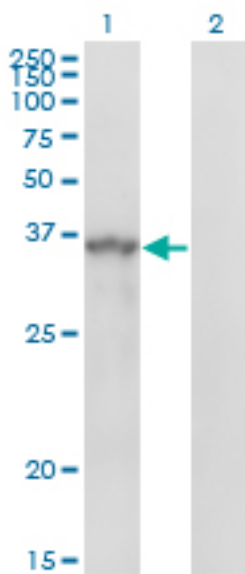
<b>CatalogID:</b>	LS-B5441
<b>Validation:</b>	This antibody replaces catalog number LS-C133631. It has been validated for use in the following assays: IHC-P.
<b>Target:</b>	sprouty homolog 1, antagonist of FGF signaling (Drosophila) (SPRY1)
<b>Synonyms:</b>	SPRY1 Antibody, HSPRY1 Antibody, Protein sprouty homolog 1 Antibody, Spry-1 Antibody
<b>Host</b>	SPRY1 antibody was produced in Mouse
<b>Clonality:</b>	Monoclonal
<b>Isotype:</b>	IgG2a,k
<b>Clone Name:</b>	3H4
<b>Immunogen Species:</b>	SPRY1 / Sprouty 1 antibody was raised against Human
<b>Immunogen:</b>	SPRY1 / Sprouty 1 antibody was raised against sSPRY1 (NP_005832, 1 a.a. ~ 111 a.a) partial recombinant protein with GST tag. MW of the GST tag alone is 26 KDa.
<b>Specificity:</b>	Human SPRY1
<b>Reactivity:</b>	Human
<b>Purification:</b>	Protein A purified
<b>Presentation:</b>	PBS, pH 7.4.
<b>Recommended Storage:</b>	Short term 4°C, long term aliquot and store at -20°C, avoid freeze thaw cycles.
<b>Usage Summary:</b>	Immunohistochemistry: Formalin-fixed paraffin-embedded sections. Sandwich ELISA: Recombinant protein. Western Blot: Cell lysate, Transfected lysate, Recombinant protein.
<b>Uses:</b>	IHC - Paraffin (5 µg/ml), Western blot (1:500 - 1:1000), ELISA (Optimal dilution to be determined by the researcher)
<b>Size:</b>	50 µg
<b>Concentration:</b>	1 mg/ml

**Immunohistochemistry Image:**



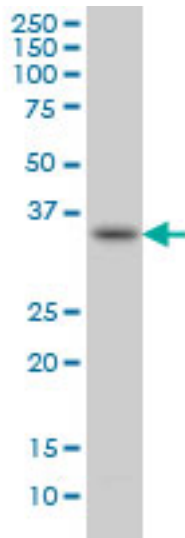
Anti-SPRY1 antibody IHC of human heart. Immunohistochemistry of formalin-fixed, paraffin-embedded tissue after heat-induced antigen retrieval. Antibody LS-B5441 concentration 5 ug/ml.

**Western Blot Image:**



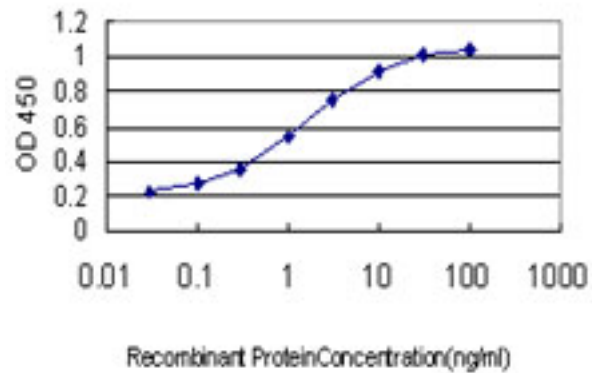
Western blot of SPRY1 expression in transfected 293T cell line by SPRY1 monoclonal antibody, clone 3H4.

**Western Blot Image:**



SPRY1 monoclonal antibody, clone 3H4. Western blot of SPRY1 expression in HepG2.

**ELISA Image:**



Detection limit for recombinant GST tagged SPRY1 is approximately 0.03 ng/ml as a capture antibody.

**Requested From:**

Japan

Laboratory Reagent For In Vitro Research Use Only

Not for resale without prior written consent from LifeSpan BioSciences, Inc.

Created on 9/24/2014

© 2014 LifeSpan BioSciences