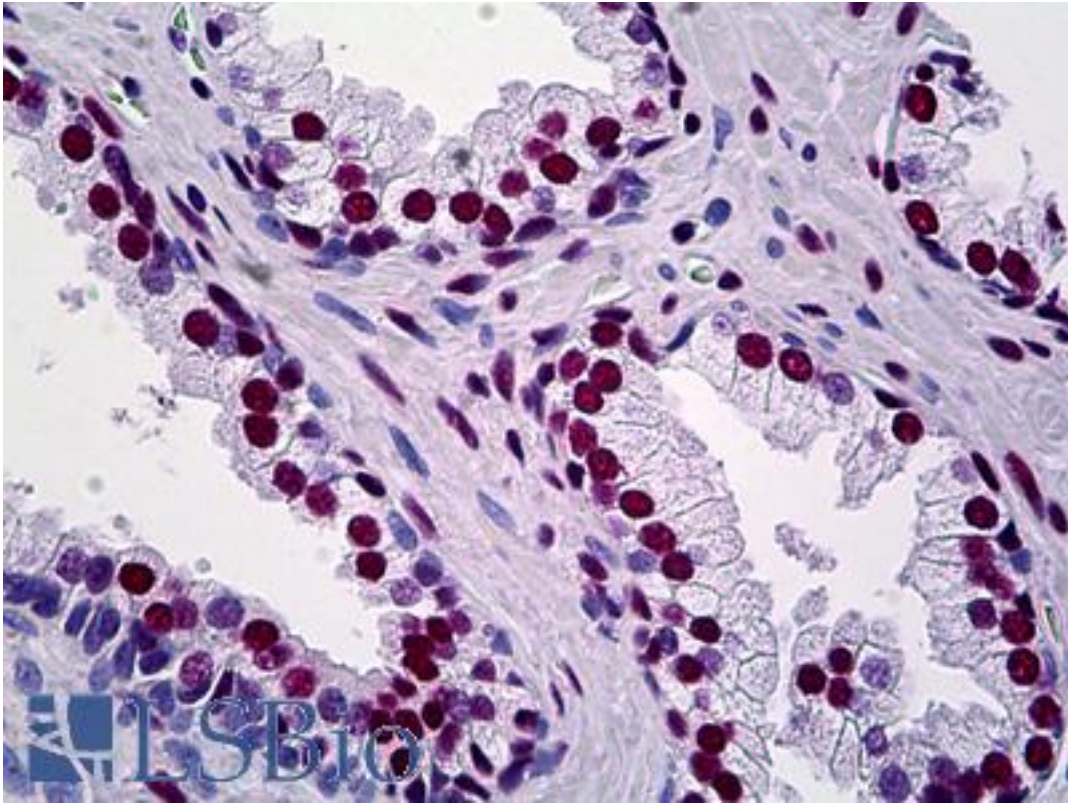


TRIM28 / KAP-1 Mouse anti-Human Monoclonal (4E6) Antibody - LS-B5439 - LSBio

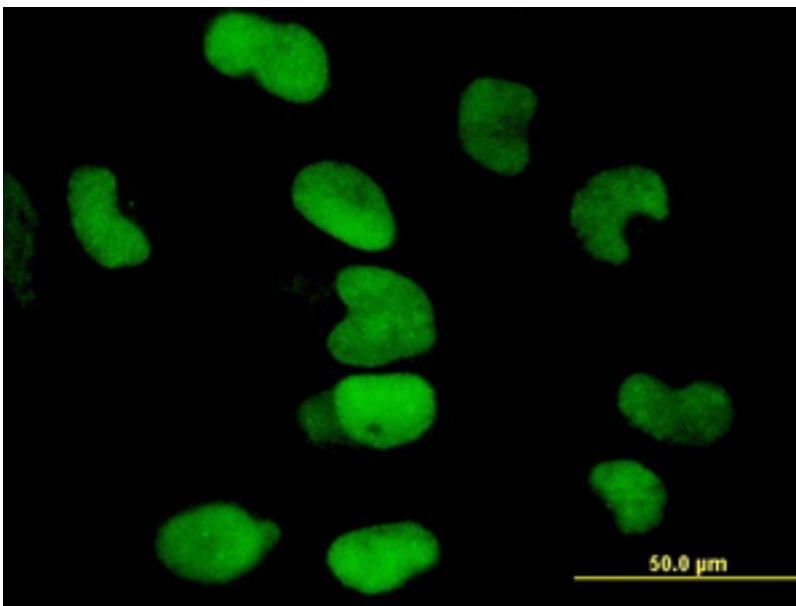
CatalogID:	LS-B5439
Validation:	This antibody replaces catalog number LS-C133628. It has been validated for use in the following assays: IHC-P.
Target:	tripartite motif containing 28 (TRIM28)
Synonyms:	TRIM28 Antibody, E3 SUMO-protein ligase TRIM28 Antibody, KRIP-1 Antibody, Nuclear corepressor KAP-1 Antibody, KAP-1 Antibody, KAP1 Antibody, KRAB-interacting protein 1 Antibody, TIF1B Antibody, RNF96 Antibody, TIF1-beta Antibody, TIF1beta Antibody, Tripartite motif-containing 28 Antibody, KRAB-associated protein 1 Antibody, RING finger protein 96 Antibody, TF1B Antibody, Tif1beta zinc finger protein Antibody, Tripartite motif containing 28 Antibody
Family / Subfamily:	Tripartite Motif / TIF1
Host	TRIM28 antibody was produced in Mouse
Clonality:	Monoclonal
Isotype:	IgG2b,k
Clone Name:	4E6
Immunogen Species:	TRIM28 / KAP-1 antibody was raised against Human
Immunogen:	TRIM28 / KAP-1 antibody was raised against tTRIM28 (AAH04978, 379 a.a. ~ 524 a.a) partial recombinant protein with GST tag. MW of the GST tag alone is 26 KDa.
Specificity:	Human TRIM28
Reactivity:	Human, Mouse, Rat
Purification:	Protein A purified
Presentation:	PBS, pH 7.2
Recommended Storage:	Short term 4°C, long term aliquot and store at -20°C, avoid freeze thaw cycles.
Usage Summary:	Immunohistochemistry: Formalin-fixed paraffin-embedded sections. RNAi Knockdown: Antibody validated. Western Blot: Cell lysate, Cell lysate, Cell lysate, Transfected lysate, Recombinant protein.
Uses:	IHC - Paraffin (5 µg/ml), Immunofluorescence (10 µg/ml), Western blot, ELISA (Optimal dilution to be determined by the researcher)
Size:	50 µg
Concentration:	0.5 mg/ml

Immunohistochemistry Image:



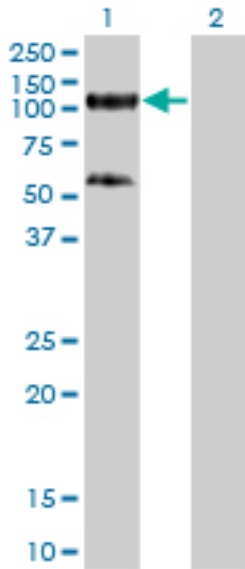
Anti-TRIM28 antibody IHC of human prostate. Immunohistochemistry of formalin-fixed, paraffin-embedded tissue after heat-induced antigen retrieval. Antibody LS-B5439 concentration 5 ug/ml.

Immunofluorescence Image:



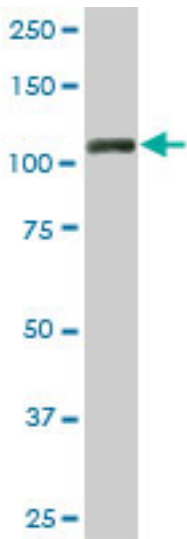
Immunofluorescence of monoclonal antibody to TRIM28 on HeLa cell. [antibody concentration 10 ug/ml]

Western Blot Image:



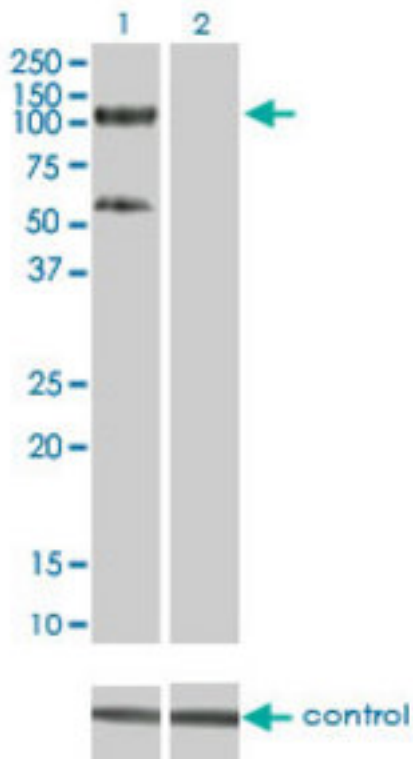
Western blot of TRIM28 expression in transfected 293T cell line by TRIM28 monoclonal antibody, clone 4E6.

Western Blot Image:



TRIM28 monoclonal antibody, clone 4E6. Western blot of TRIM28 expression in PC-12.

RNA interference Image:



Western blot of TRIM28 over-expressed 293 cell line, cotransfected with TRIM28 Validated Chimera RNAi (Lane 2) or non-transfected control (Lane 1). Blot probed with TRIM28 monoclonal antibody clone 4E6. GAPDH (36.1 kD) used as control.

Requested From:

Japan

Laboratory Reagent For In Vitro Research Use Only

Not for resale without prior written consent from LifeSpan BioSciences, Inc.

Created on 9/24/2014

© 2014 LifeSpan BioSciences