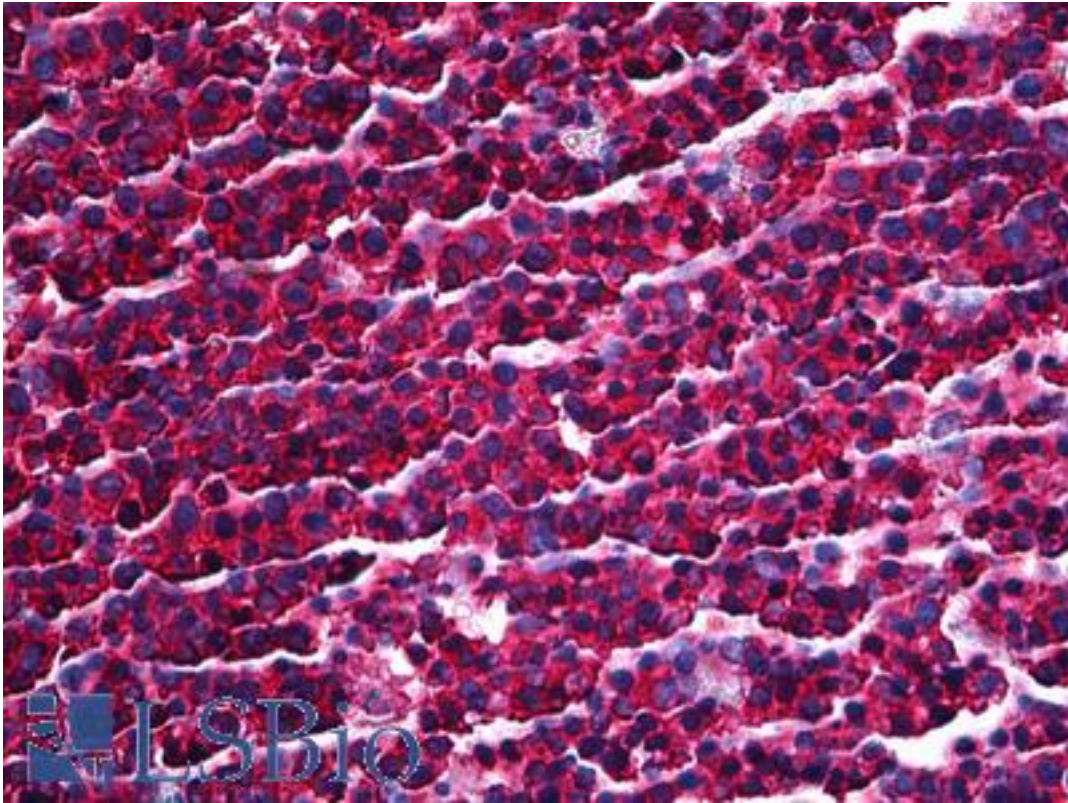


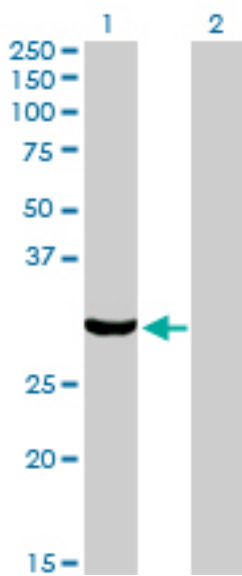
PRKRA / PACT Mouse anti-Human Monoclonal (1B9-1A7) Antibody - LS-B5437 - LSBio	
<b>CatalogID:</b>	LS-B5437
<b>Validation:</b>	This antibody replaces catalog number LS-C133558. It has been validated for use in the following assays: IHC-P.
<b>Target:</b>	protein kinase, interferon-inducible double stranded RNA dependent activator (PRKRA)
<b>Synonyms:</b>	PRKRA Antibody, DYT16 Antibody, HSD14 Antibody, PKR-associating protein X Antibody, PACT Antibody, PKR-associated protein X Antibody
<b>Host</b>	PRKRA antibody was produced in Mouse
<b>Clonality:</b>	Monoclonal
<b>Isotype:</b>	IgG1,k
<b>Clone Name:</b>	1B9-1A7
<b>Immunogen Species:</b>	PRKRA / PACT antibody was raised against Human
<b>Immunogen:</b>	PRKRA / PACT antibody was raised against pPRKRA (AAH09470, 1 a.a. ~ 314 a.a) full length recombinant protein with GST tag. MW of the GST tag alone is 26 KDa.
<b>Specificity:</b>	Human PACT
<b>Reactivity:</b>	Human
<b>Purification:</b>	Protein A purified
<b>Presentation:</b>	PBS, pH 7.4. Sourced in Ascites.
<b>Recommended Storage:</b>	Short term 4°C, long term aliquot and store at -20°C, avoid freeze thaw cycles.
<b>Usage Summary:</b>	Immunohistochemistry: Formalin-fixed paraffin-embedded sections, Formalin/PFA-fixed paraffin-embedded sections. Sandwich ELISA: Recombinant protein. Western Blot: Tissue lysate, Cell lysate, Transfected lysate, Recombinant protein.
<b>Uses:</b>	IHC - Paraffin (2.5 µg/ml), Western blot (1:500 - 1:1000), Immunoprecipitation, ELISA (Optimal dilution to be determined by the researcher)
<b>Size:</b>	50 µg
<b>Concentration:</b>	0.5 mg/ml

**Immunohistochemistry Image:**



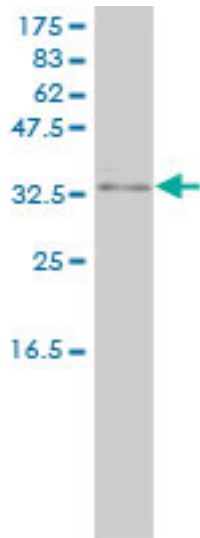
Anti-PRKRA / PACT antibody IHC of human tonsil. Immunohistochemistry of formalin-fixed, paraffin-embedded tissue after heat-induced antigen retrieval. Antibody LS-B5437 concentration 2.5 ug/ml.

**Western Blot Image:**



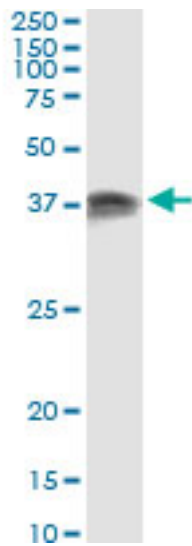
Western blot of PRKRA expression in transfected 293T cell line by PRKRA monoclonal antibody, clone 1B9-1A7.

**Western Blot Image:**



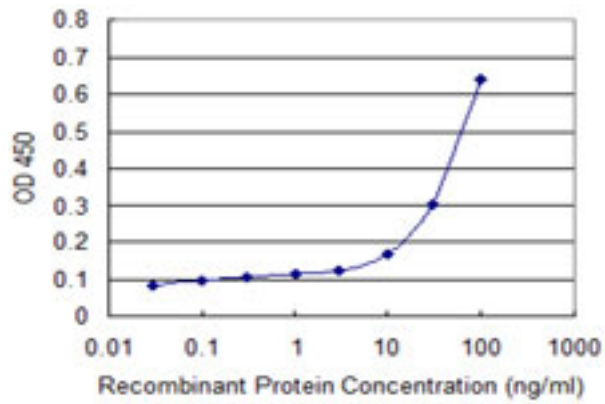
PRKRA monoclonal antibody, clone 1B9-1A7. Western blot of PRKRA expression in human liver.

**Immunoprecipitation Image:**



Immunoprecipitation of PRKRA transfected lysate using anti-PRKRA monoclonal antibody and Protein A Magnetic Bead.

**ELISA Image:**



Detection limit for recombinant GST tagged PRKRA is approximately 0.03 ng/ml as a capture antibody.

**Requested From:**

Japan

Laboratory Reagent For In Vitro Research Use Only

Not for resale without prior written consent from LifeSpan BioSciences, Inc.

Created on 9/24/2014

© 2014 LifeSpan BioSciences