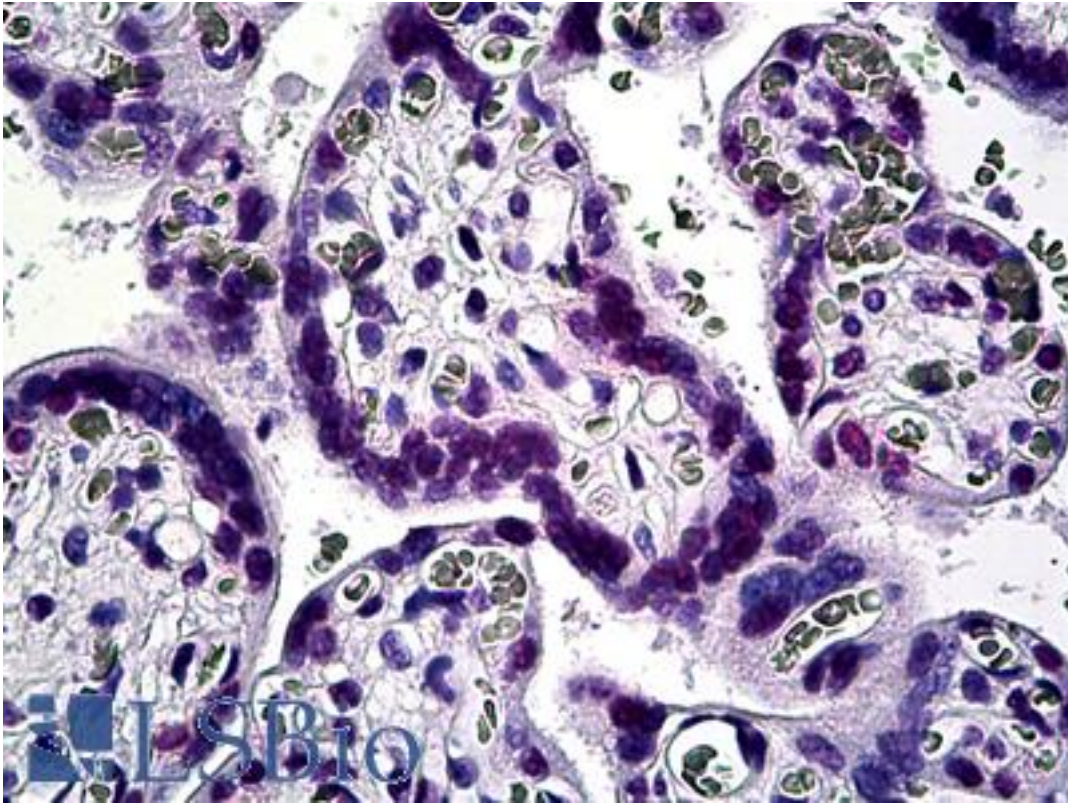


KLF11 Mouse anti-Human Monoclonal (10D8) Antibody - LS-B5433 - LSBio

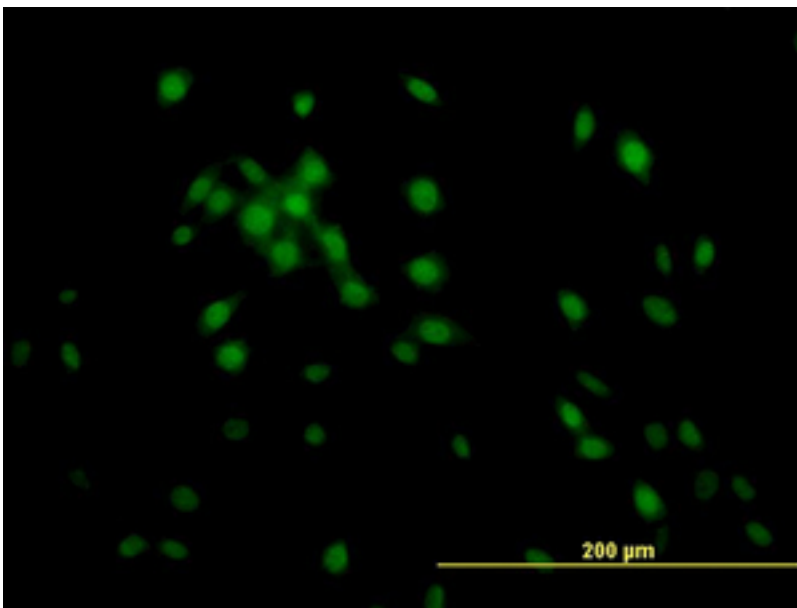
CatalogID:	LS-B5433
Validation:	This antibody replaces catalog number LS-C133548. It has been validated for use in the following assays: IHC-P.
Target:	Kruppel-like factor 11 (KLF11)
Synonyms:	KLF11 Antibody, FKLF1 Antibody, Krueppel-like factor 11 Antibody, Kruppel-like factor 11 Antibody, Tieg3 Antibody, MODY7 Antibody, TIEG2 Antibody, TIEG-2 Antibody, FKLF Antibody
Host	KLF11 antibody was produced in Mouse
Clonality:	Monoclonal
Isotype:	IgG2a,k
Clone Name:	10D8
Immunogen Species:	KLF11 antibody was raised against Human
Immunogen:	KLF11 antibody was raised against kLF11 (NP_003588, 404 a.a. ~ 513 a.a) partial recombinant protein with GST tag. MW of the GST tag alone is 26 KDa.
Specificity:	Human KLF11
Reactivity:	Human, Mouse
Purification:	Protein A purified
Presentation:	PBS, pH 7.4.
Recommended Storage:	Store at -20°C, avoid freeze thaw cycles.
Usage Summary:	Immunohistochemistry: Formalin-fixed paraffin-embedded sections. Western Blot: Cell lysate, Recombinant protein.
Uses:	IHC - Paraffin (10 µg/ml), Immunofluorescence (10 µg/ml), Western blot, ELISA (Optimal dilution to be determined by the researcher)
Size:	50 µg
Concentration:	0.5 mg/ml

Immunohistochemistry Image:



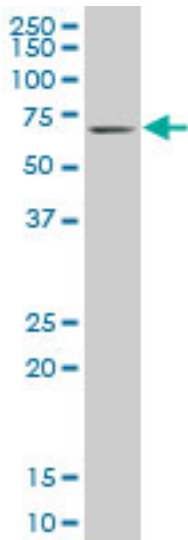
Anti-KLF11 antibody IHC of human placenta. Immunohistochemistry of formalin-fixed, paraffin-embedded tissue after heat-induced antigen retrieval. Antibody LS-B5433 concentration 10 ug/ml.

Immunofluorescence Image:



Immunofluorescence of monoclonal antibody to KLF11 on NIH/3T3 cell. [antibody concentration 10 ug/ml]

Western Blot Image:



KLF11 monoclonal antibody, clone 10D8 Western blot of KLF11 expression in NIH/3T3.

Requested From:

Japan

Laboratory Reagent For In Vitro Research Use Only

Not for resale without prior written consent from LifeSpan BioSciences, Inc.

Created on 9/24/2014

© 2014 LifeSpan BioSciences