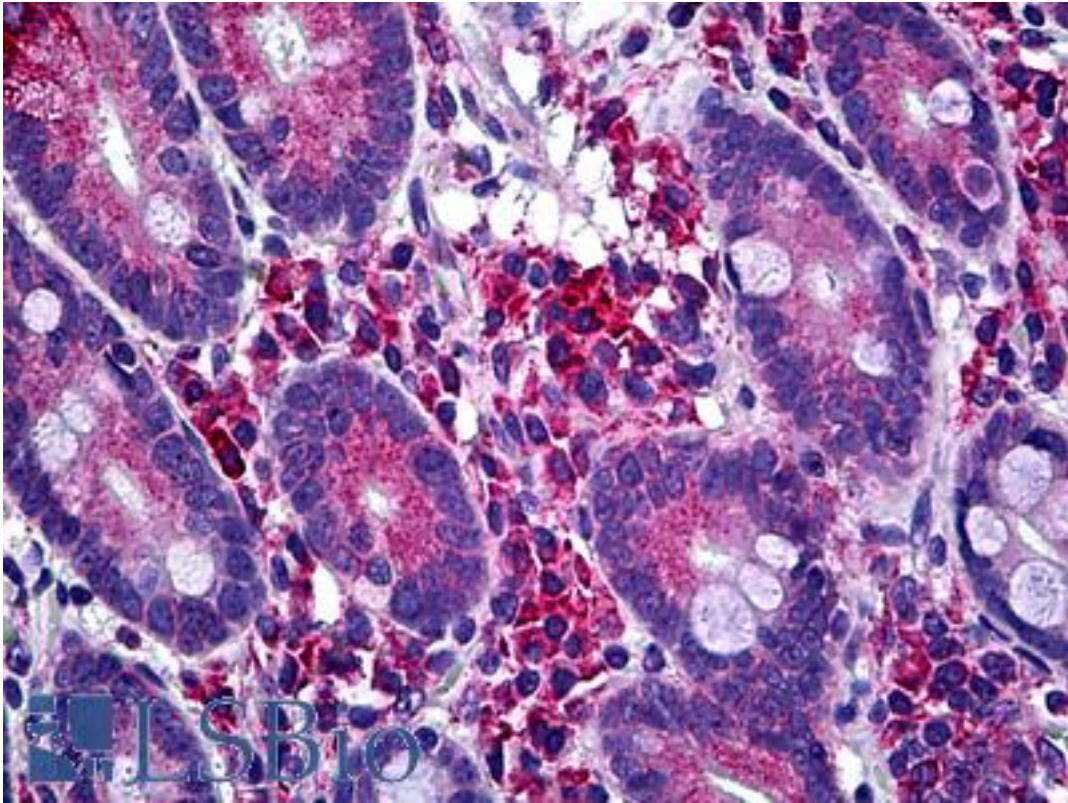


LIMK1 / LIMK Mouse anti-Human Monoclonal (1A8) Antibody - LS-B5430 - LSBio

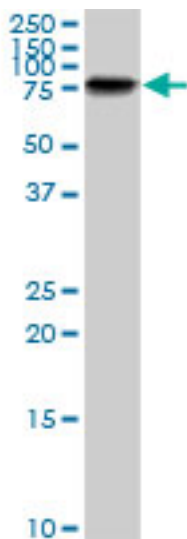
<b>CatalogID:</b>	LS-B5430
<b>Validation:</b>	This antibody replaces catalog number LS-C133293. It has been validated for use in the following assays: IHC-P.
<b>Target:</b>	LIM domain kinase 1 (LIMK1)
<b>Synonyms:</b>	LIMK1 Antibody, LIM domain kinase 1 Antibody, Lim kinase 1 Antibody, LIMK-1 Antibody, LIM kinase Antibody, LIMK Antibody
<b>Family / Subfamily:</b>	Protein Kinase / LIMK
<b>Host</b>	LIMK1 antibody was produced in Mouse
<b>Clonality:</b>	Monoclonal
<b>Isotype:</b>	IgG2a,k
<b>Clone Name:</b>	1A8
<b>Immunogen Species:</b>	LIMK1 / LIMK antibody was raised against Human
<b>Immunogen:</b>	LIMK1 / LIMK antibody was raised against LIMK1 (NP_002305, 548 a.a. ~ 648 a.a) partial recombinant protein with GST tag. MW of the GST tag alone is 26 KDa.
<b>Specificity:</b>	Human LIMK1
<b>Reactivity:</b>	Human, Mouse, Rat
<b>Purification:</b>	Protein A purified
<b>Presentation:</b>	PBS, pH 7.4.
<b>Recommended Storage:</b>	Short term 4°C, long term aliquot and store at -20°C, avoid freeze thaw cycles.
<b>Usage Summary:</b>	Immunohistochemistry: Formalin-fixed paraffin-embedded sections. Sandwich ELISA: Recombinant protein. Western Blot using cell lysates and the recombinant protein used as the immunogen.
<b>Uses:</b>	IHC - Paraffin (10 µg/ml), Western blot, ELISA (Optimal dilution to be determined by the researcher)
<b>Size:</b>	50 µg
<b>Concentration:</b>	0.5 mg/ml

**Immunohistochemistry Image:**



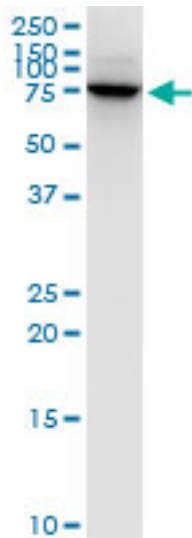
Anti-LIMK1 antibody IHC of human small intestine. Immunohistochemistry of formalin-fixed, paraffin-embedded tissue after heat-induced antigen retrieval. Antibody LS-B5430 concentration 10 ug/ml.

**Western Blot Image:**



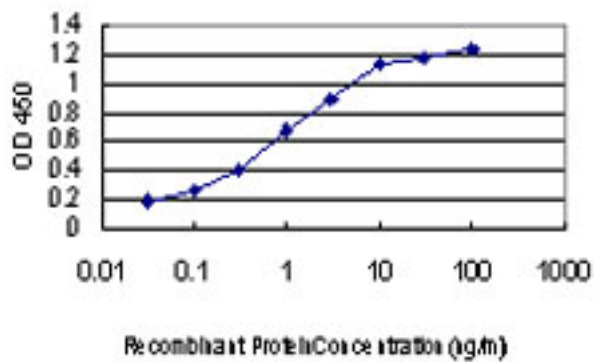
LIMK1 monoclonal antibody clone 1A8. Western blot of LIMK1 expression in NIH/3T3.

**Western Blot Image:**



LIMK1 monoclonal antibody clone 1A8. Western blot of LIMK1 expression in PC-12.

**ELISA Image:**



Detection limit for recombinant GST tagged LIMK1 is approximately 0.03 ng/ml as a capture antibody.

**Requested From:**

Japan

Laboratory Reagent For In Vitro Research Use Only

Not for resale without prior written consent from LifeSpan BioSciences, Inc.

Created on 9/24/2014

© 2014 LifeSpan BioSciences