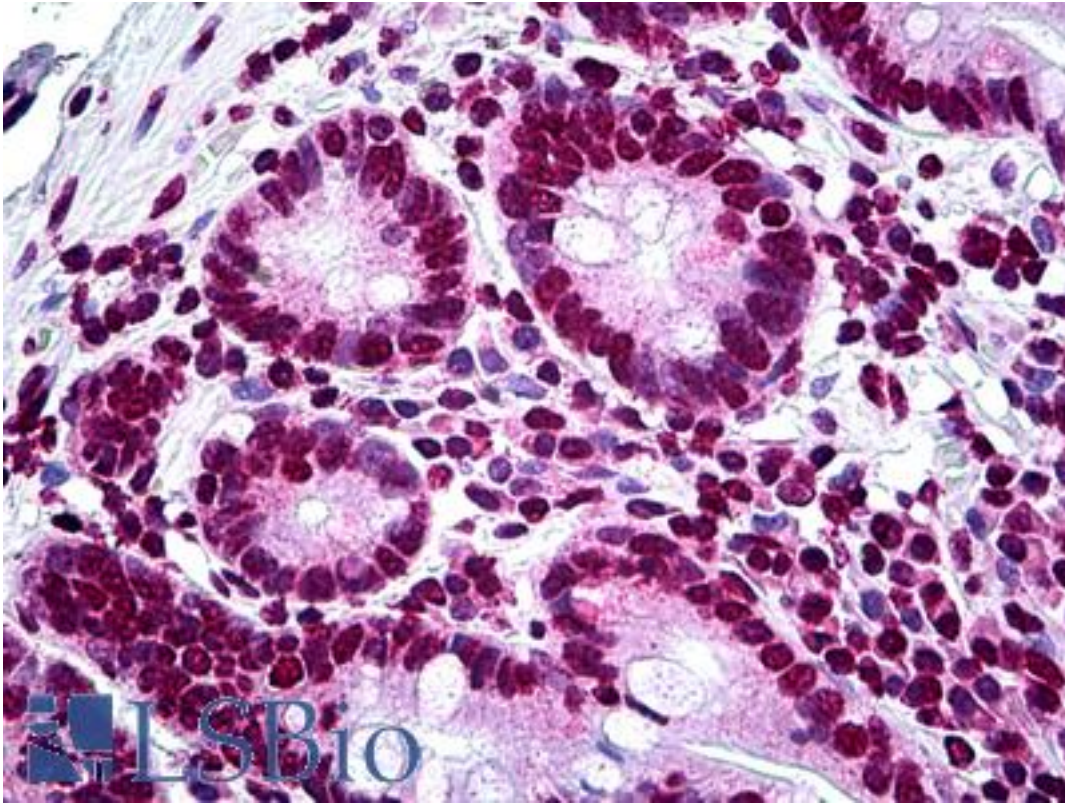


LHX1 Mouse anti-Human Monoclonal (2G10) Antibody - LS-B5429 - LSBio	
CatalogID:	LS-B5429
Validation:	This antibody replaces catalog number LS-C133291. It has been validated for use in the following assays: IHC-P.
Target:	LIM homeobox 1 (LHX1)
Synonyms:	LHX1 Antibody, Homeobox protein Lim-1 Antibody, LIM1 Antibody, HLim-1 Antibody, LIM homeobox 1 Antibody, LIM homeobox protein 1 Antibody, LIM-1 Antibody, LIM/homeobox protein Lhx1 Antibody
Host	LHX1 antibody was produced in Mouse
Clonality:	Monoclonal
Isotype:	IgG2b,k
Clone Name:	2G10
Immunogen Species:	LHX1 antibody was raised against Human
Immunogen:	LHX1 antibody was raised against LHX1 (NP_005559, 1 a.a. ~ 101 a.a) partial recombinant protein with GST tag. MW of the GST tag alone is 26 KDa.
Specificity:	Human LHX1
Reactivity:	Human
Purification:	Protein A purified
Presentation:	PBS, pH 7.2. Sourced in Ascites.
Recommended Storage:	Short term 4°C, long term aliquot and store at -20°C, avoid freeze thaw cycles.
Usage Summary:	Immunohistochemistry: Formalin-fixed paraffin-embedded sections.
Uses:	IHC - Paraffin (5 µg/ml), ELISA (Optimal dilution to be determined by the researcher)
Size:	50 µg
Concentration:	0.42 mg/ml

Immunohistochemistry Image:



Anti-LHX1 antibody IHC of human small intestine. Immunohistochemistry of formalin-fixed, paraffin-embedded tissue after heat-induced antigen retrieval. Antibody LS-B5429 concentration 5 ug/ml.

Requested From:

Japan

Laboratory Reagent For In Vitro Research Use Only

Not for resale without prior written consent from LifeSpan BioSciences, Inc.

Created on 9/24/2014

© 2014 LifeSpan BioSciences