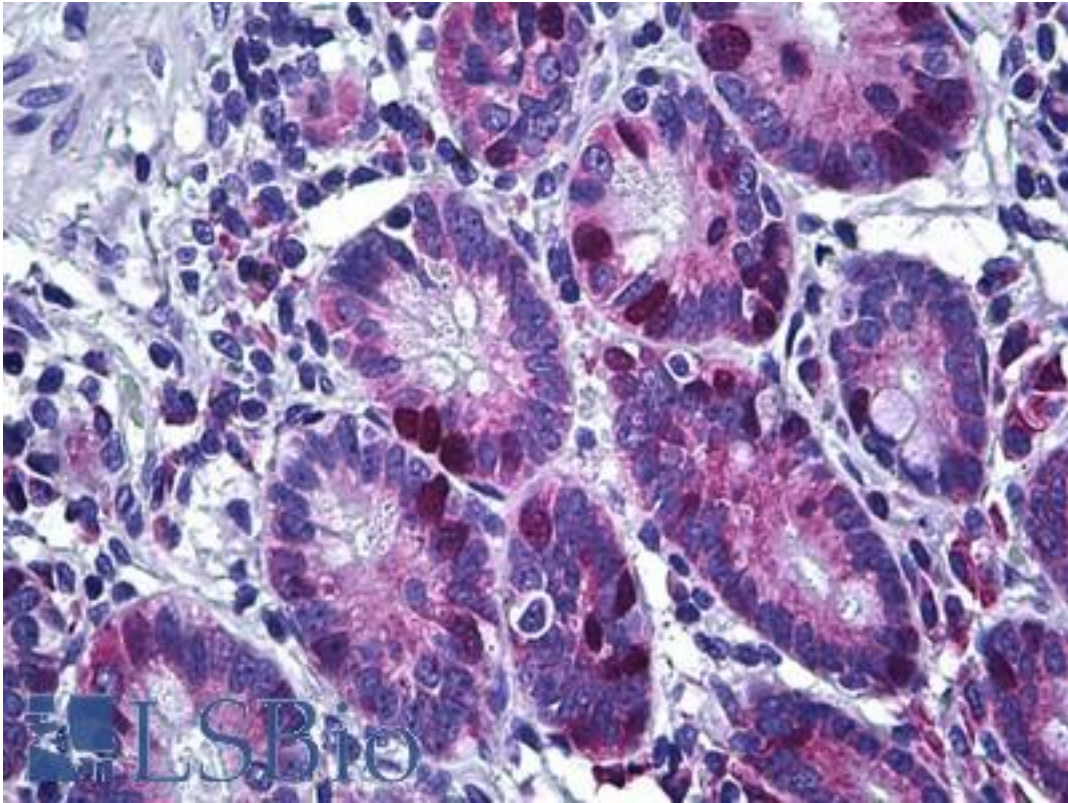


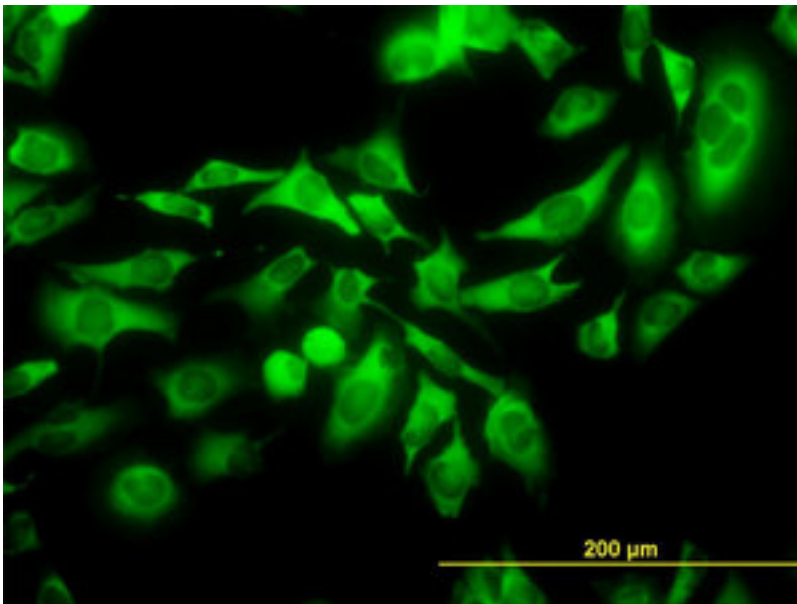
HSET / KIFC1 Mouse anti-Human Monoclonal (2B9) Antibody - LS-B5425 - LSBio	
<b>CatalogID:</b>	LS-B5425
<b>Validation:</b>	This antibody replaces catalog number LS-C133280. It has been validated for use in the following assays: IHC-P.
<b>Target:</b>	kinesin family member C1 (KIFC1)
<b>Synonyms:</b>	KIFC1 Antibody, HSET Antibody, KNSL2 Antibody, Kinesin-like 2 Antibody, Kinesin-related protein Antibody, Kinesin family member C1 Antibody, Kinesin-like protein KIFC1 Antibody, Kinesin-like protein 2 Antibody, Kinesin-related protein HSET Antibody
<b>Host</b>	KIFC1 antibody was produced in Mouse
<b>Clonality:</b>	Monoclonal
<b>Isotype:</b>	IgG2a,k
<b>Clone Name:</b>	2B9
<b>Immunogen Species:</b>	HSET / KIFC1 antibody was raised against Human
<b>Immunogen:</b>	HSET / KIFC1 antibody was raised against kIFC1 (AAH00712, 53 a.a. ~ 152 a.a) partial recombinant protein with GST tag. MW of the GST tag alone is 26 KDa.
<b>Specificity:</b>	Human KIFC1
<b>Reactivity:</b>	Human
<b>Purification:</b>	Protein A purified
<b>Presentation:</b>	PBS, pH 7.2. Sourced in Ascites.
<b>Recommended Storage:</b>	Short term 4°C, long term aliquot and store at -20°C, avoid freeze thaw cycles.
<b>Usage Summary:</b>	Immunohistochemistry: Formalin-fixed paraffin-embedded sections. Sandwich ELISA: Recombinant protein. Western Blot with the recombinant protein used as the immunogen.
<b>Uses:</b>	IHC - Paraffin (5 µg/ml), Immunofluorescence (10 µg/ml), Western blot, ELISA (Optimal dilution to be determined by the researcher)
<b>Size:</b>	50 µg
<b>Concentration:</b>	1 mg/ml

**Immunohistochemistry Image:**



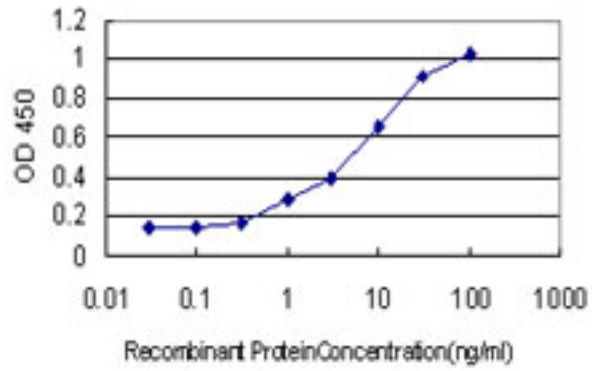
Anti-KIFC1 antibody IHC of human small intestine. Immunohistochemistry of formalin-fixed, paraffin-embedded tissue after heat-induced antigen retrieval. Antibody LS-B5425 concentration 5 ug/ml.

**Immunofluorescence Image:**



Immunofluorescence of monoclonal antibody to KIFC1 on HeLa cells.

**ELISA Image:**



Detection limit for recombinant GST tagged KIFC1 is approximately 1 ng/ml as a capture antibody.

**Requested From:**

Japan

Laboratory Reagent For In Vitro Research Use Only

Not for resale without prior written consent from LifeSpan BioSciences, Inc.

Created on 9/24/2014

© 2014 LifeSpan BioSciences