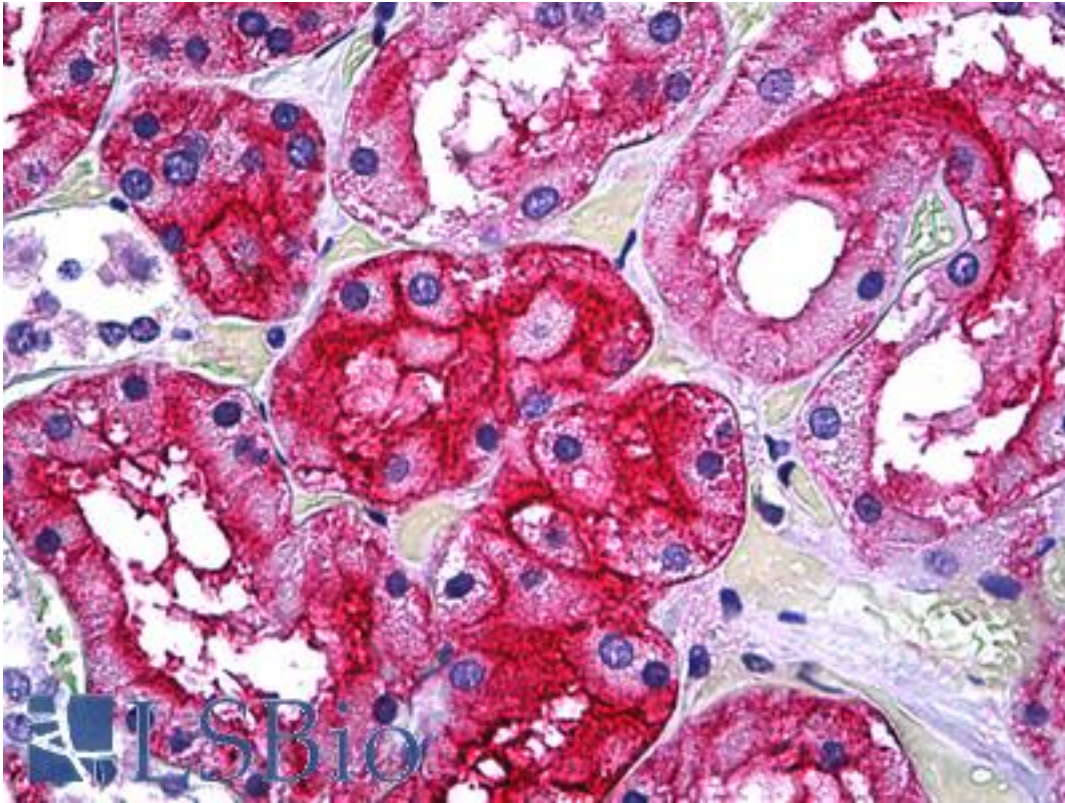


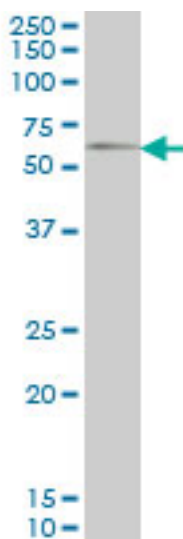
GGT1 / GGT Mouse anti-Human Monoclonal (1F9) Antibody - LS-B5416 - LSBio	
<b>CatalogID:</b>	LS-B5416
<b>Validation:</b>	This antibody replaces catalog number LS-C133218. It has been validated for use in the following assays: IHC-P.
<b>Target:</b>	gamma-glutamyltransferase 1 (GGT1)
<b>Synonyms:</b>	GGT1 Antibody, CD224 antigen Antibody, CD224 Antibody, Ec 2.3.2.2 Antibody, Glutamyl transpeptidase Antibody, GTG Antibody, Gamma-glutamyltransferase Antibody, Glutathione hydrolase 1 Antibody, GLUTATHIONURIA Antibody, Gamma-glutamyl transpeptidase Antibody, Gamma-glutamyltransferase 1 Antibody, Gamma-glutamyltranspeptidase 1 Antibody, GGT Antibody, Leukotriene-C4 hydrolase Antibody, D22S672 Antibody, D22S732 Antibody, Gamma-glutamyltransferase 2 Antibody, GGT 1 Antibody
<b>Family / Subfamily:</b>	Protease / Threonine T3
<b>Host</b>	GGT1 antibody was produced in Mouse
<b>Clonality:</b>	Monoclonal
<b>Isotype:</b>	IgG2a,k
<b>Clone Name:</b>	1F9
<b>Immunogen Species:</b>	GGT1 / GGT antibody was raised against Human
<b>Immunogen:</b>	GGT1 / GGT antibody was raised against gGT1 (NP_005256, 381 a.a. ~ 471 a.a) partial recombinant protein with GST tag. MW of the GST tag alone is 26 KDa.
<b>Specificity:</b>	Human GGT1
<b>Reactivity:</b>	Human, Mouse
<b>Purification:</b>	Protein A purified
<b>Presentation:</b>	PBS, pH 7.4. Sourced in Ascites.
<b>Recommended Storage:</b>	Short term 4°C, long term aliquot and store at -20°C, avoid freeze thaw cycles.
<b>Usage Summary:</b>	Immunohistochemistry: Formalin-fixed paraffin-embedded sections. Western Blot using cell lysates and the recombinant protein used as the immunogen.
<b>Uses:</b>	IHC - Paraffin (5 µg/ml), Western blot (1:500 - 1:1000), Immunoprecipitation, ELISA (Optimal dilution to be determined by the researcher)
<b>Size:</b>	50 µg
<b>Concentration:</b>	0.5 mg/ml

**Immunohistochemistry Image:**



Anti-GGT1 / GGT antibody IHC of human kidney, tubules. Immunohistochemistry of formalin-fixed, paraffin-embedded tissue after heat-induced antigen retrieval. Antibody LS-B5416 concentration 5 ug/ml.

**Western Blot Image:**



GGT1 monoclonal antibody clone 1F9 Western blot of GGT1 expression in NIH/3T3.

Requested From:

Japan

Laboratory Reagent For In Vitro Research Use Only

Not for resale without prior written consent from LifeSpan BioSciences, Inc.

Created on 9/24/2014

© 2014 LifeSpan BioSciences