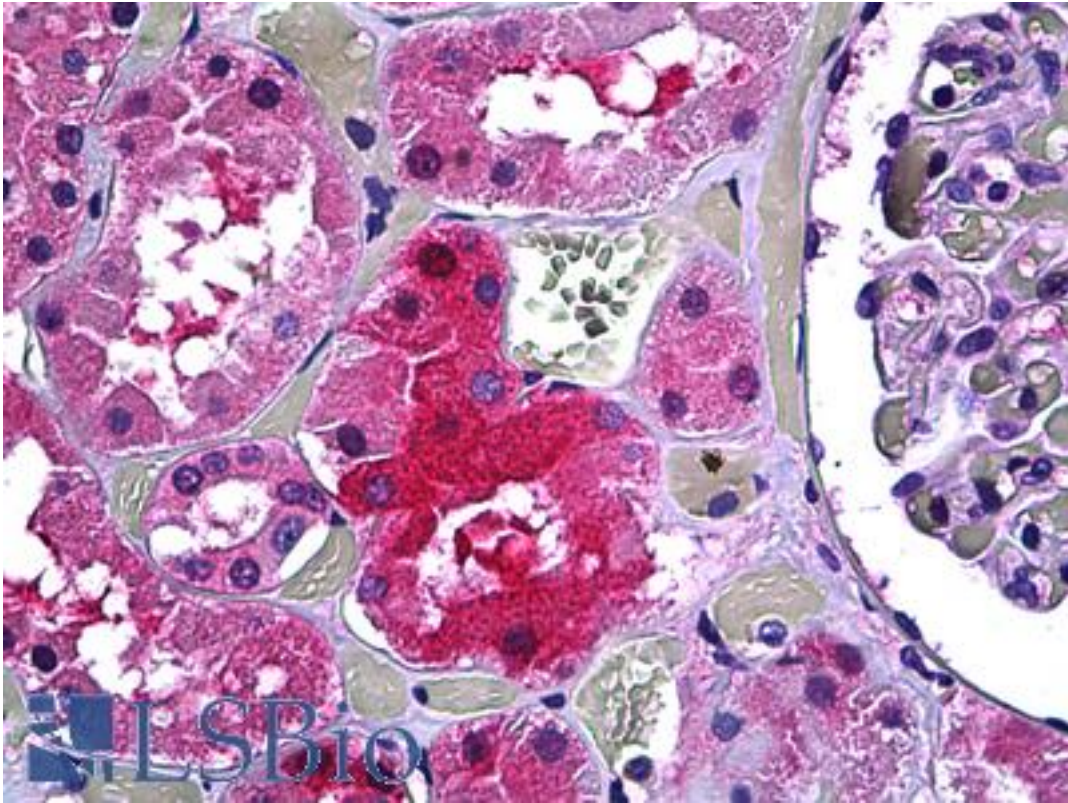


GALT Mouse anti-Human Monoclonal (4C11) Antibody - LS-B5410 - LSBio

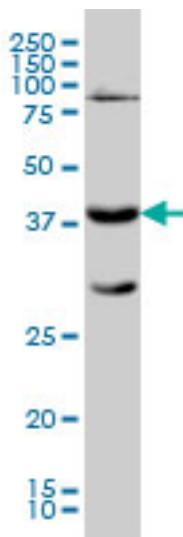
<b>CatalogID:</b>	LS-B5410
<b>Validation:</b>	This antibody replaces catalog number LS-C133215. It has been validated for use in the following assays: IHC-P.
<b>Target:</b>	galactose-1-phosphate uridylyltransferase (GALT)
<b>Synonyms:</b>	GALT Antibody, Gal-1-P uridylyltransferase Antibody
<b>Host</b>	GALT antibody was produced in Mouse
<b>Clonality:</b>	Monoclonal
<b>Isotype:</b>	IgG2a,k
<b>Clone Name:</b>	4C11
<b>Immunogen Species:</b>	GALT antibody was raised against Human
<b>Immunogen:</b>	GALT antibody was raised against gALT (AAH15045, 1 a.a. ~ 380 a.a) full length recombinant protein with GST tag. MW of the GST tag alone is 26 KDa.
<b>Specificity:</b>	Human GALT
<b>Reactivity:</b>	Human
<b>Purification:</b>	Protein A purified
<b>Presentation:</b>	PBS, pH 7.2
<b>Recommended Storage:</b>	Short term 4°C, long term aliquot and store at -20°C, avoid freeze thaw cycles.
<b>Usage Summary:</b>	Immunohistochemistry: Formalin-fixed paraffin-embedded sections. Sandwich ELISA: Recombinant protein. Western Blot using cell lysates, transfected lysate and the recombinant protein used as the immunogen.
<b>Uses:</b>	IHC - Paraffin (10 µg/ml), Western blot, ELISA (Optimal dilution to be determined by the researcher)
<b>Size:</b>	50 µg
<b>Concentration:</b>	0.25 mg/ml

**Immunohistochemistry Image:**



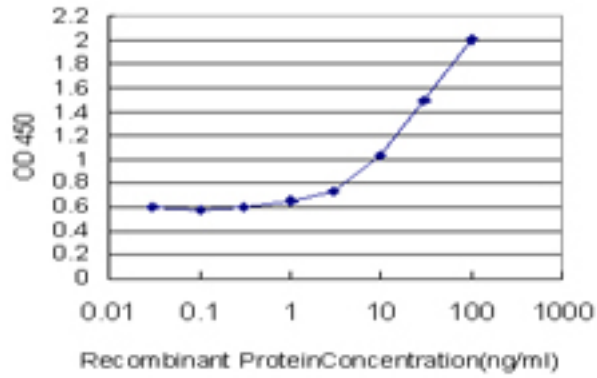
Anti-GALT antibody IHC of human kidney, tubules. Immunohistochemistry of formalin-fixed, paraffin-embedded tissue after heat-induced antigen retrieval. Antibody LS-B5410 concentration 10 ug/ml.

**Western Blot Image:**



GALT monoclonal antibody clone 4C11 Western blot of GALT expression in K-562.

**ELISA Image:**



Detection limit for recombinant GST tagged GALT is approximately 0.3 ng/ml as a capture antibody.

**Requested From:**

Japan

Laboratory Reagent For In Vitro Research Use Only

Not for resale without prior written consent from LifeSpan BioSciences, Inc.

Created on 9/24/2014

© 2014 LifeSpan BioSciences