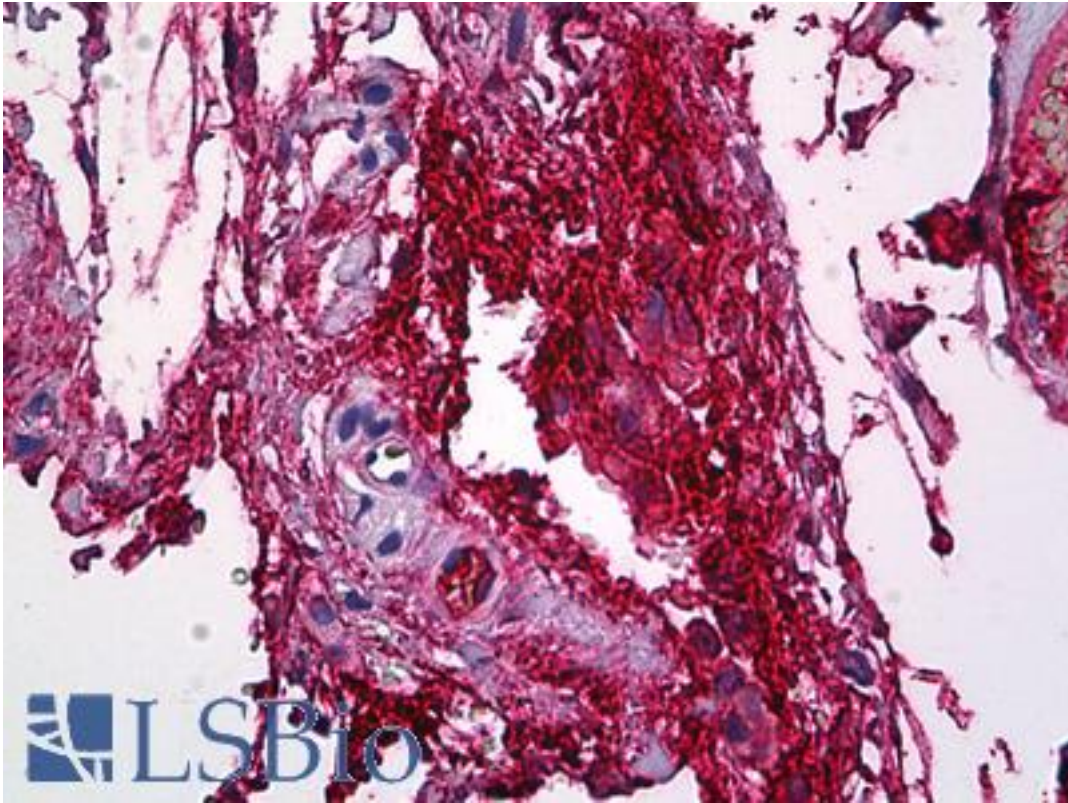


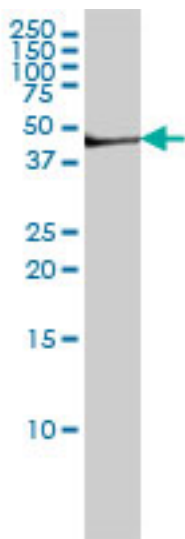
FGG / Fibrinogen Gamma Mouse anti-Human Monoclonal (1F2) Antibody - LS-B5409 - LSBio	
<b>CatalogID:</b>	LS-B5409
<b>Validation:</b>	This antibody replaces catalog number LS-C133190. It has been validated for use in the following assays: IHC-P.
<b>Target:</b>	fibrinogen gamma chain (FGG)
<b>Synonyms:</b>	FGG Antibody, Fibrinogen gamma-b chain Antibody, Fibrinogen gamma chain Antibody, Fibrinogen, gamma polypeptide Antibody
<b>Host</b>	FGG antibody was produced in Mouse
<b>Clonality:</b>	Monoclonal
<b>Isotype:</b>	IgG1,k
<b>Clone Name:</b>	1F2
<b>Immunogen Species:</b>	FGG / Fibrinogen Gamma antibody was raised against Human
<b>Immunogen:</b>	FGG / Fibrinogen Gamma antibody was raised against fGG (AAH07044, 31 a.a. ~ 130 a.a) partial recombinant protein with GST tag. MW of the GST tag alone is 26 KDa.
<b>Specificity:</b>	Human Fibrinogen Gamma-b Chain
<b>Reactivity:</b>	Human
<b>Purification:</b>	Protein A purified
<b>Presentation:</b>	PBS, pH 7.2. Sourced in Ascites.
<b>Recommended Storage:</b>	Short term 4°C, long term aliquot and store at -20°C, avoid freeze thaw cycles.
<b>Usage Summary:</b>	Immunohistochemistry: Formalin-fixed paraffin-embedded sections. Sandwich ELISA: Recombinant protein. Western Blot using cell lysates and the recombinant protein used as the immunogen.
<b>Uses:</b>	IHC - Paraffin (5 µg/ml), Western blot (1:500 - 1:1000), ELISA (Optimal dilution to be determined by the researcher)
<b>Size:</b>	50 µg
<b>Concentration:</b>	0.5 mg/ml

**Immunohistochemistry Image:**



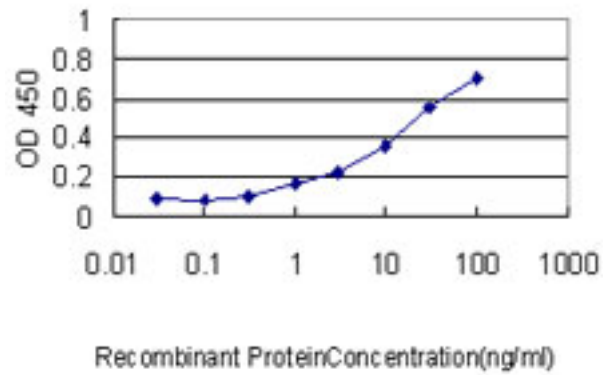
Anti-FGG / Fibrinogen Gamma Chain antibody IHC of human intravascular plasma. Immunohistochemistry of formalin-fixed, paraffin-embedded tissue after heat-induced antigen retrieval. Antibody LS-B5409 concentration 5 ug/ml.

**Western Blot Image:**



FGG monoclonal antibody clone 1F2 Western blot of FGG expression in HeLa NE.

**ELISA Image:**



Detection limit for recombinant GST tagged FGG is approximately 0.3 ng/ml as a capture antibody.

**Requested From:**

Japan

Laboratory Reagent For In Vitro Research Use Only

Not for resale without prior written consent from LifeSpan BioSciences, Inc.

Created on 9/24/2014

© 2014 LifeSpan BioSciences