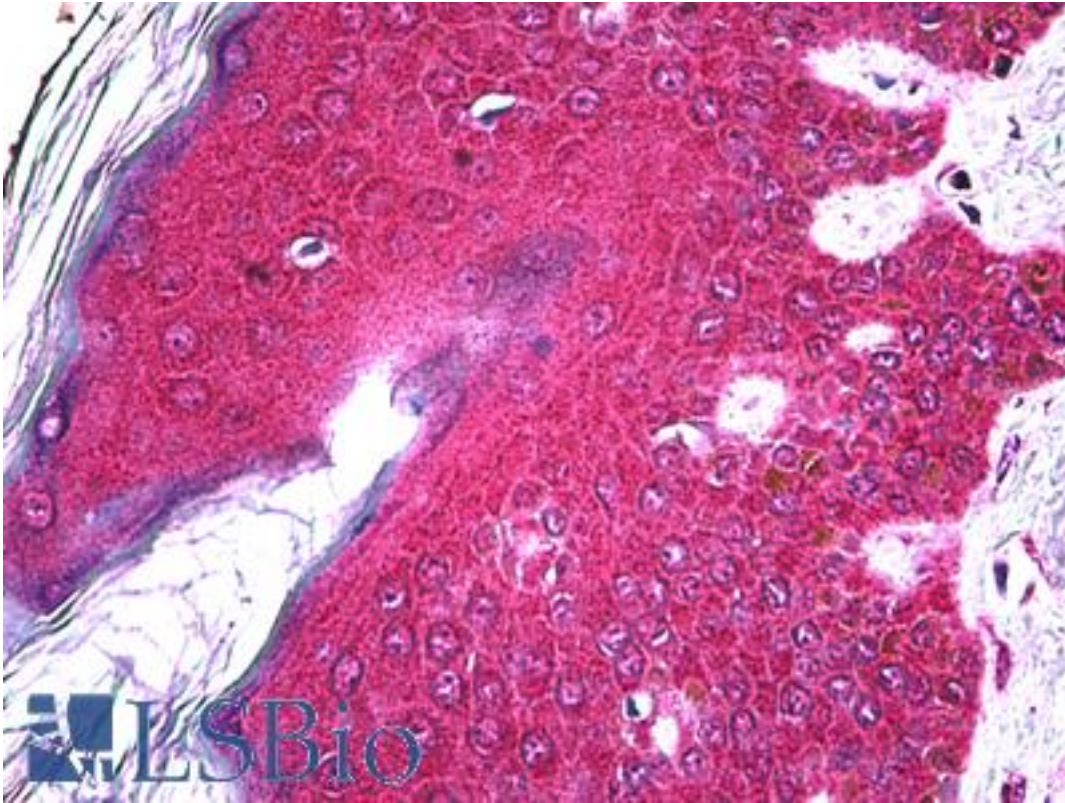


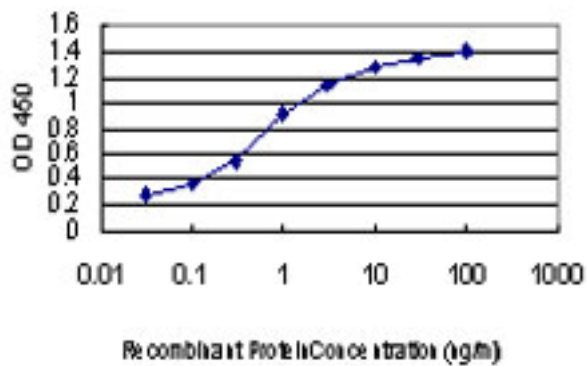
FGF Receptor / FGFR2 Mouse anti-Human Monoclonal (1G3) Antibody - LS-B5408 - LSBio	
CatalogID:	LS-B5408
Validation:	This antibody replaces catalog number LS-C133189. It has been validated for use in the following assays: IHC-P.
Target:	fibroblast growth factor receptor 2 (FGFR2)
Synonyms:	FGFR2 Antibody, BEK Antibody, BBDS Antibody, Bacteria-expressed kinase Antibody, CD332 antigen Antibody, CFD1 Antibody, Craniofacial dysostosis 1 Antibody, CEK3 Antibody, Fgf bek Antibody, FGF receptor Antibody, Hydroxyaryl-protein kinase Antibody, Jackson-Weiss syndrome Antibody, JWS Antibody, FGF Receptor 2 Antibody, KSAM Antibody, KGFR Antibody, Soluble FGFR4 variant 4 Antibody, BFR-1 Antibody, TK14 Antibody, TK25 Antibody, CD332 Antibody, ECT1 Antibody, K-SAM Antibody
Family / Subfamily:	Protein Kinase / FGF Receptor
Host	FGFR2 antibody was produced in Mouse
Clonality:	Monoclonal
Isotype:	IgG2b,k
Clone Name:	1G3
Immunogen Species:	FGF Receptor / FGFR2 antibody was raised against Human
Immunogen:	FGF Receptor / FGFR2 antibody was raised against fGFR2 (AAH39243, 621 a.a. ~ 724 a.a) partial recombinant protein with GST tag. MW of the GST tag alone is 26 KDa.
Specificity:	Human FGFR2
Reactivity:	Human
Purification:	Protein A purified
Presentation:	PBS, pH 7.4
Recommended Storage:	Short term 4°C, long term aliquot and store at -20°C, avoid freeze thaw cycles.
Usage Summary:	Immunohistochemistry: Formalin-fixed paraffin-embedded sections. Sandwich ELISA: Recombinant protein. Western Blot performed with the recombinant protein used as the immunogen.
Uses:	IHC - Paraffin (5 µg/ml), Western blot, ELISA (Optimal dilution to be determined by the researcher)
Size:	50 µg
Concentration:	0.46 mg/ml

Immunohistochemistry Image:



Anti-FGFR2 antibody IHC of human skin. Immunohistochemistry of formalin-fixed, paraffin-embedded tissue after heat-induced antigen retrieval. Antibody LS-B5408 concentration 5 ug/ml.

ELISA Image:



Detection limit for recombinant GST tagged FGFR2 is approximately 0.03 ng/ml as a capture antibody.

Requested From:

Japan

Laboratory Reagent For In Vitro Research Use Only

Not for resale without prior written consent from LifeSpan BioSciences, Inc.

Created on 9/24/2014

© 2014 LifeSpan BioSciences