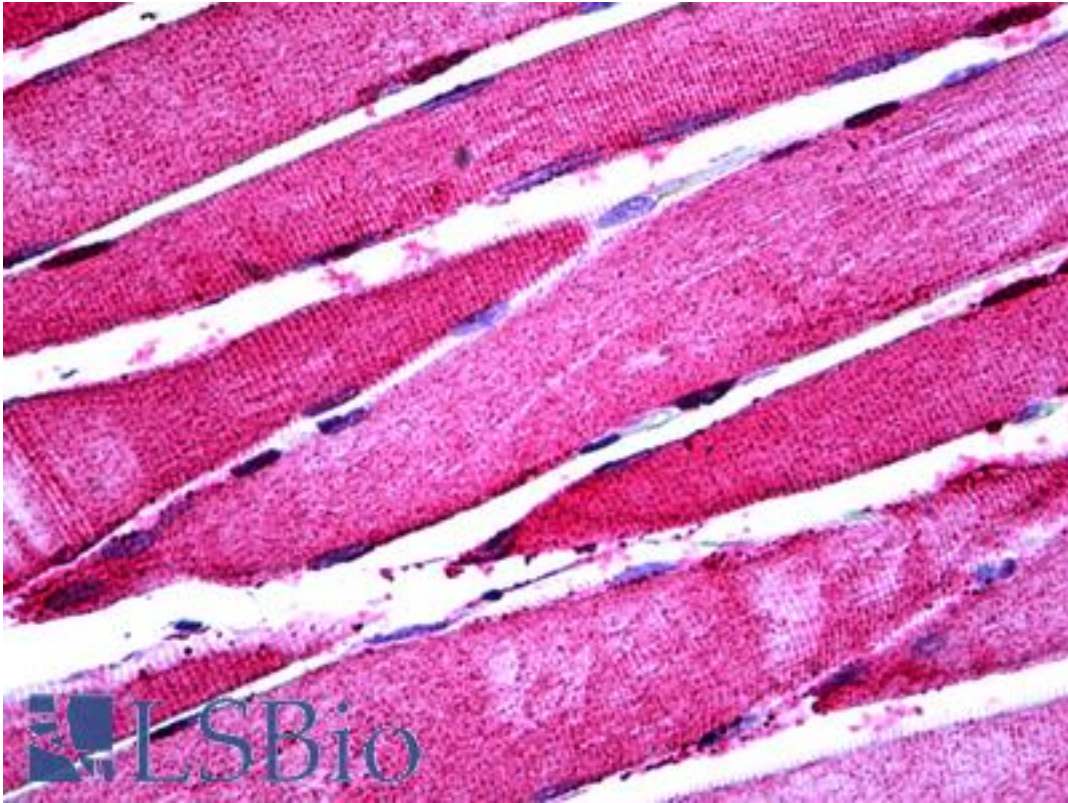


ENO3 / Enolase 3 Mouse anti-Human Monoclonal (5D1) Antibody - LS-B5402 - LSBio

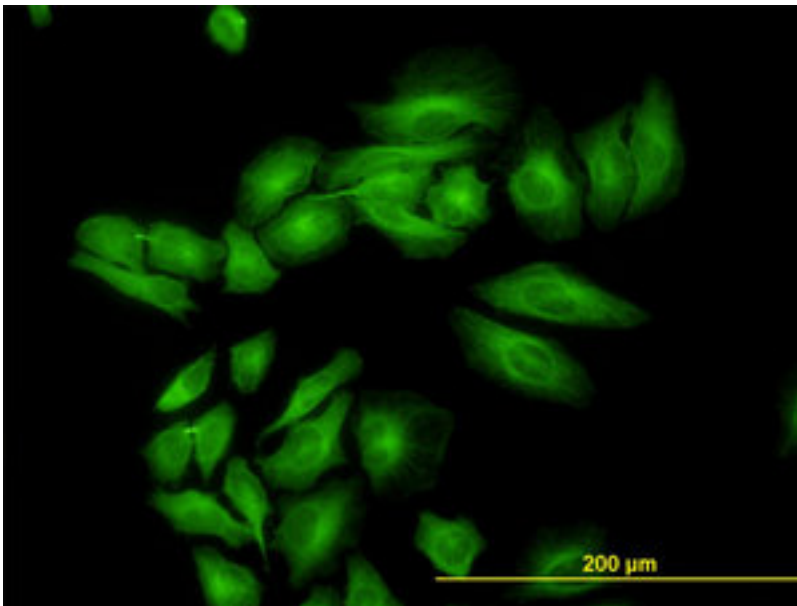
<b>CatalogID:</b>	LS-B5402
<b>Validation:</b>	This antibody replaces catalog number LS-C133171. It has been validated for use in the following assays: IHC-P.
<b>Target:</b>	enolase 3 (beta, muscle) (ENO3)
<b>Synonyms:</b>	ENO3 Antibody, Beta-enolase Antibody, Enolase 3 Antibody, Enolase 3 (beta, muscle) Antibody, Enolase 3, (beta, muscle) Antibody, Muscle-specific enolase Antibody, MSE Antibody, Skeletal muscle enolase Antibody, GSD13 Antibody
<b>Host</b>	ENO3 antibody was produced in Mouse
<b>Clonality:</b>	Monoclonal
<b>Isotype:</b>	IgG2a,k
<b>Clone Name:</b>	5D1
<b>Immunogen Species:</b>	ENO3 / Enolase 3 antibody was raised against Human
<b>Immunogen:</b>	ENO3 / Enolase 3 antibody was raised against eNO3 (NP_001967, 228 a.a. ~ 278 a.a) partial recombinant protein with GST tag. MW of the GST tag alone is 26 KDa.
<b>Specificity:</b>	Human ENO3
<b>Reactivity:</b>	Human
<b>Purification:</b>	Protein A purified
<b>Presentation:</b>	PBS, pH 7.2. Sourced in Ascites.
<b>Recommended Storage:</b>	Short term 4°C, long term aliquot and store at -20°C, avoid freeze thaw cycles.
<b>Usage Summary:</b>	Immunohistochemistry: Formalin-fixed paraffin-embedded sections, Formalin/PFA-fixed paraffin-embedded sections. RNAi Knockdown: Antibody validated. Sandwich ELISA: Recombinant protein. Western Blot: Cell lysate, Transfected lysate, Recombinant protein.
<b>Uses:</b>	IHC - Paraffin (5 µg/ml), Immunofluorescence (10 µg/ml), Western blot, ELISA (Optimal dilution to be determined by the researcher)
<b>Size:</b>	50 µg
<b>Concentration:</b>	0.5 mg/ml

**Immunohistochemistry Image:**



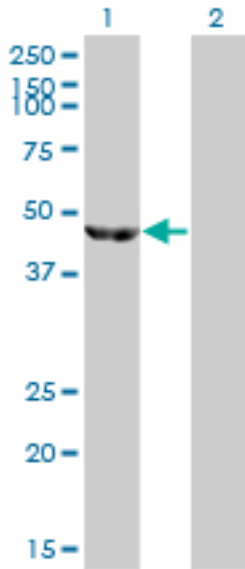
Anti-ENO3 antibody IHC of human skeletal muscle. Immunohistochemistry of formalin-fixed, paraffin-embedded tissue after heat-induced antigen retrieval. Antibody LS-B5402 concentration 5 ug/ml.

**Immunofluorescence Image:**



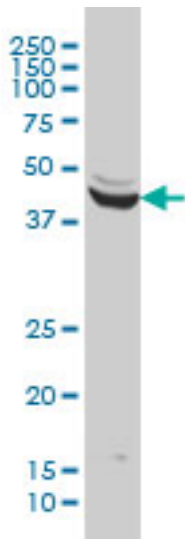
Immunofluorescence of monoclonal antibody to ENO3 on HeLa cell. [antibody concentration 10 ug/ml]

**Western Blot Image:**



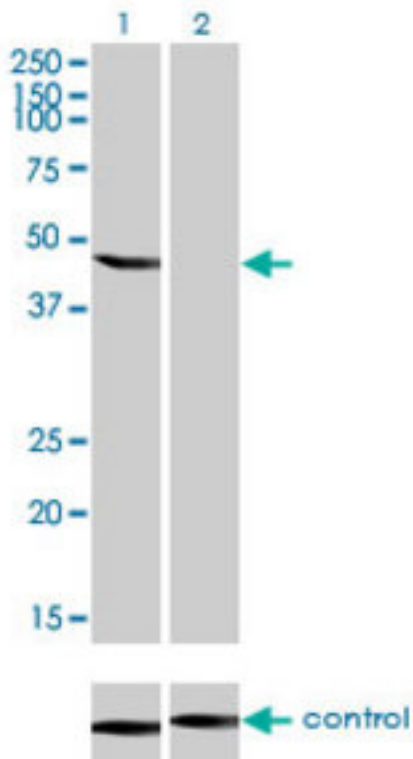
Western blot of ENO3 expression in transfected 293T cell line by ENO3 monoclonal antibody (M01), clone 5D1.

**Western Blot Image:**



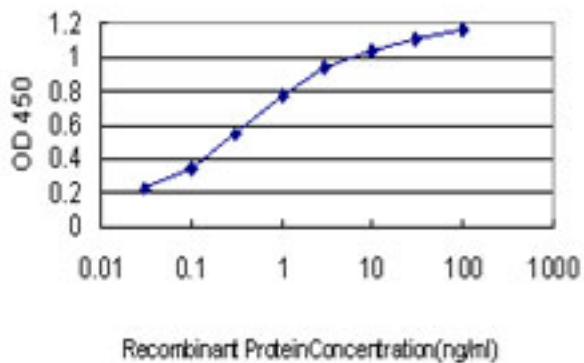
ENO3 monoclonal antibody (M01), clone 5D1 Western blot of ENO3 expression in HeLa.

**RNA interference Image:**



Western blot of ENO3 over-expressed 293 cell line, cotransfected with ENO3 Validated Chimera RNAi (Lane 2) or non-transfected control (Lane 1). Blot probed with ENO3 monoclonal antibody, clone 5D1. GAPDH ( 36.1 kD ) used as specificity an.

**ELISA Image:**



Detection limit for recombinant GST tagged ENO3 is approximately 0.03 ng/ml as a capture antibody.

Requested From:

Japan

Laboratory Reagent For In Vitro Research Use Only

Not for resale without prior written consent from LifeSpan BioSciences, Inc.

Created on 9/24/2014

© 2014 LifeSpan BioSciences