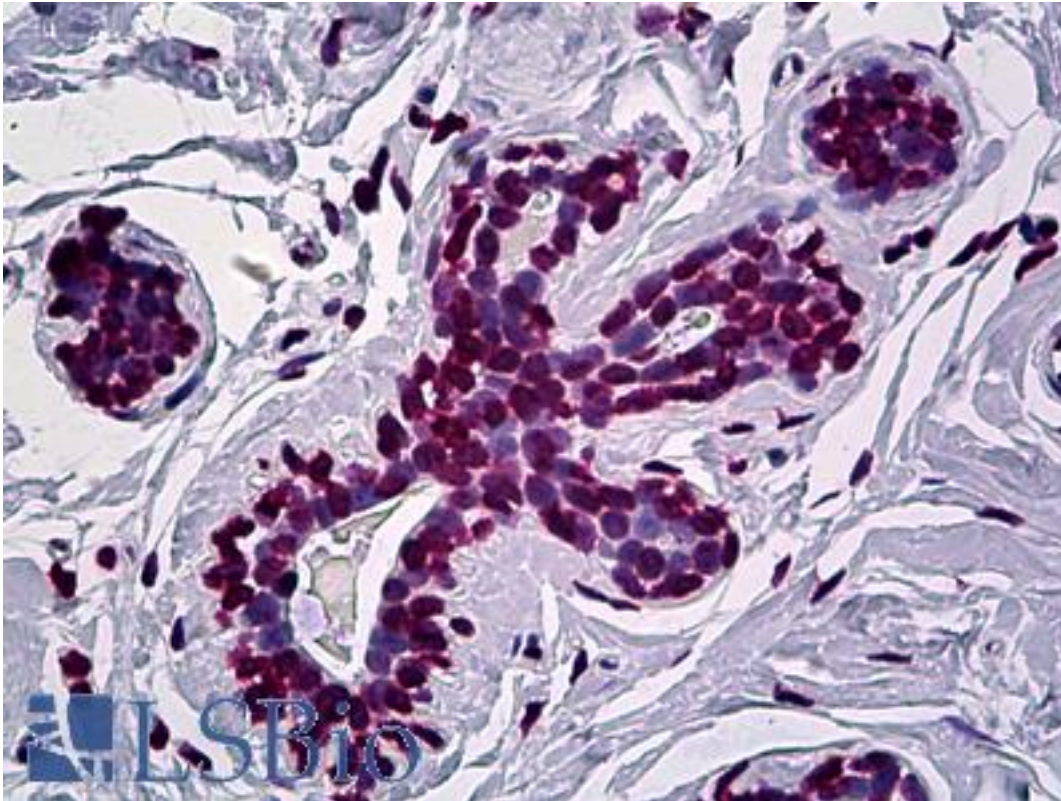


EN1 / Engrailed Mouse anti-Human Monoclonal (1F5) Antibody - LS-B5401 - LSBio

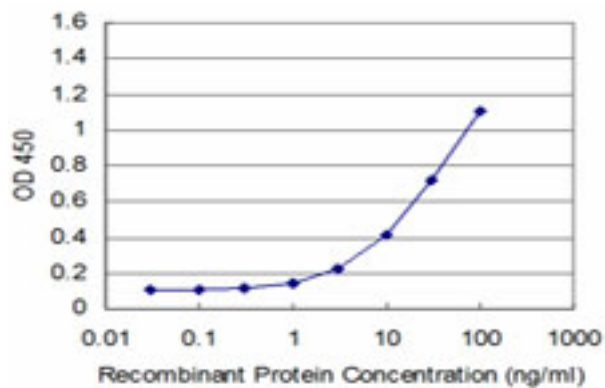
CatalogID:	LS-B5401
Validation:	This antibody replaces catalog number LS-C133170. It has been validated for use in the following assays: IHC-P.
Target:	engrailed homeobox 1 (EN1)
Synonyms:	EN1 Antibody, Engrailed 1 Antibody, Engrailed homolog 1 Antibody, Homeobox protein en-1 Antibody, Homeobox protein engrailed-1 Antibody, Hu-En-1 Antibody, Engrailed homeobox 1 Antibody
Host	EN1 antibody was produced in Mouse
Clonality:	Monoclonal
Isotype:	IgG2a,k
Clone Name:	1F5
Immunogen Species:	EN1 / Engrailed antibody was raised against Human
Immunogen:	EN1 / Engrailed antibody was raised against eN1 (NP_001417, 266 a.a. ~ 392 a.a) full length recombinant protein with GST tag. MW of the GST tag alone is 26 KDa.
Specificity:	Human Engrailed Homolog 1
Reactivity:	Human
Purification:	Protein A purified
Presentation:	PBS, pH 7.4. Sourced in Ascites.
Recommended Storage:	Short term 4°C, long term aliquot and store at -20°C, avoid freeze thaw cycles.
Usage Summary:	Immunohistochemistry: Formalin-fixed paraffin-embedded sections. Sandwich ELISA: Recombinant protein. Western Blot performed with the recombinant protein used as the immunogen.
Uses:	IHC - Paraffin (5 µg/ml), Western blot (1:500 - 1:1000), ELISA (Optimal dilution to be determined by the researcher)
Size:	50 µg
Concentration:	0.5 mg/ml

Immunohistochemistry Image:



Anti-EN1 antibody IHC of human breast. Immunohistochemistry of formalin-fixed, paraffin-embedded tissue after heat-induced antigen retrieval. Antibody LS-B5401 concentration 5 ug/ml.

ELISA Image:



Detection limit for recombinant GST tagged EN1 is approximately 1 ng/ml as a capture antibody.

Requested From:

Japan

Laboratory Reagent For In Vitro Research Use Only

Not for resale without prior written consent from LifeSpan BioSciences, Inc.

Created on 9/24/2014

© 2014 LifeSpan BioSciences