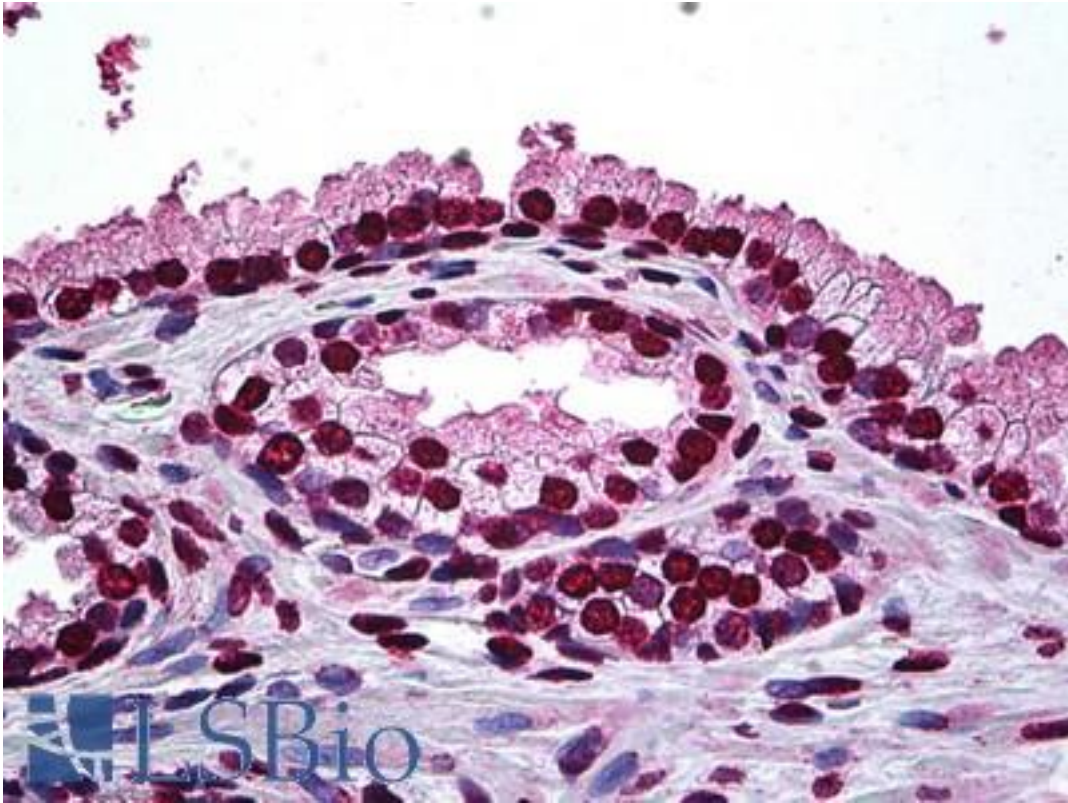


DLX2 Mouse anti-Human Monoclonal (2B12) Antibody - LS-B5396 - LSBio

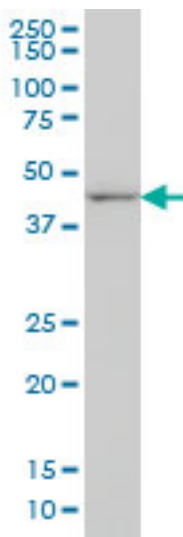
CatalogID:	LS-B5396
Validation:	This antibody replaces catalog number LS-C133158. It has been validated for use in the following assays: IHC-P.
Target:	distal-less homeobox 2 (DLX2)
Synonyms:	DLX2 Antibody, Distal-less homeo box 2 Antibody, Distal-less homeobox 2 Antibody, TES1 Antibody, Homeobox protein DLX-2 Antibody, TES-1 Antibody
Host	DLX2 antibody was produced in Mouse
Clonality:	Monoclonal
Isotype:	IgG2a,k
Clone Name:	2B12
Immunogen Species:	DLX2 antibody was raised against Human
Immunogen:	DLX2 antibody was raised against dLX2 (NP_004396, 1 a.a. ~ 110 a.a) partial recombinant protein with GST tag. MW of the GST tag alone is 26 KDa.
Specificity:	Human Dlx2
Reactivity:	Human, Mouse
Purification:	Protein A purified
Presentation:	PBS, pH 7.2
Recommended Storage:	Short term 4°C, long term aliquot and store at -20°C, avoid freeze thaw cycles.
Usage Summary:	Immunohistochemistry: Formalin-fixed paraffin-embedded sections. Sandwich ELISA: Recombinant protein. Western Blot: Cell lysate, Recombinant protein.
Uses:	IHC - Paraffin (5 µg/ml), Western blot, ELISA (Optimal dilution to be determined by the researcher)
Size:	50 µg
Concentration:	0.35 mg/ml

Immunohistochemistry Image:



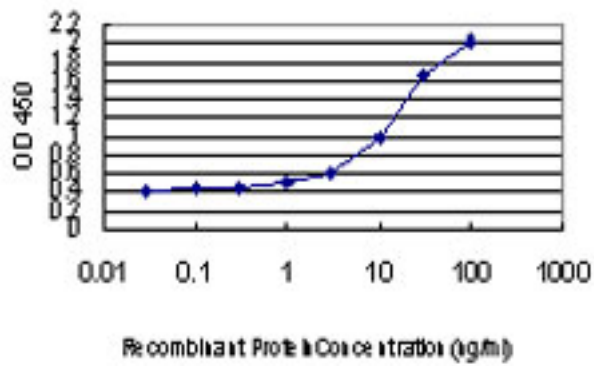
Anti-DLX2 antibody IHC of human prostate. Immunohistochemistry of formalin-fixed, paraffin-embedded tissue after heat-induced antigen retrieval. Antibody LS-B5396 concentration 5 ug/ml.

Western Blot Image:



DLX2 monoclonal antibody, clone 2B12 Western blot of DLX2 expression in NIH/3T3.

ELISA Image:



Detection limit for recombinant GST tagged DLX2 is approximately 1 ng/ml as a capture antibody.

Requested From:

Japan

Laboratory Reagent For In Vitro Research Use Only

Not for resale without prior written consent from LifeSpan BioSciences, Inc.

Created on 9/24/2014

© 2014 LifeSpan BioSciences