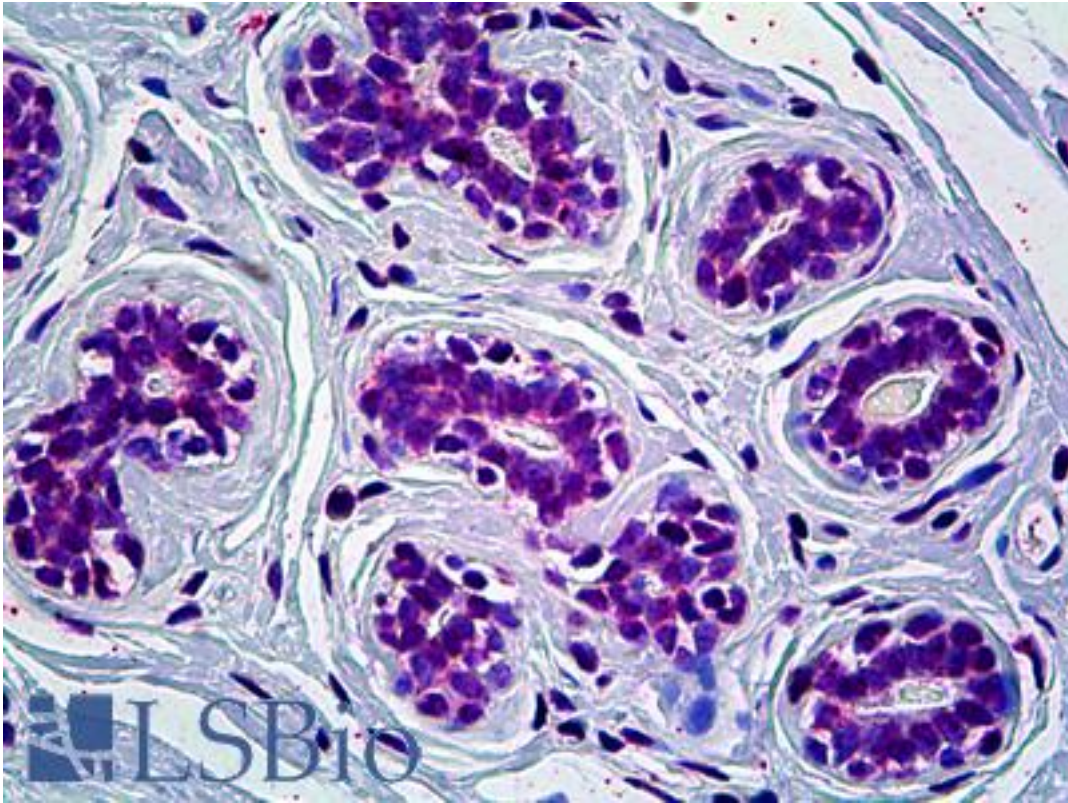


**CRY1 Mouse anti-Human Monoclonal (4H4-1C4) Antibody - LS-B5393 - LSBio**

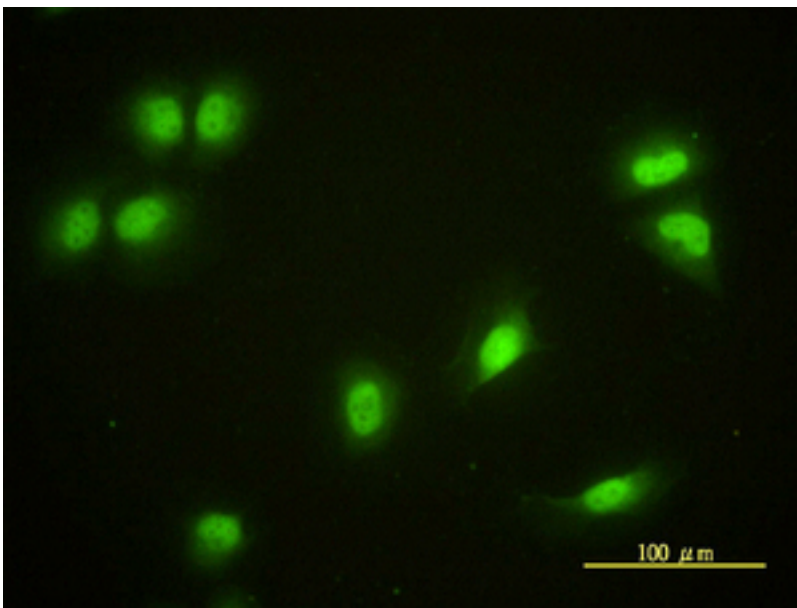
<b>CatalogID:</b>	LS-B5393
<b>Validation:</b>	This antibody replaces catalog number LS-C133136. It has been validated for use in the following assays: IHC-P.
<b>Target:</b>	cryptochrome circadian clock 1 (CRY1)
<b>Synonyms:</b>	CRY1 Antibody, Chryptochrome 1 Antibody, Cryptochrome-1 Antibody, Photolyase homolog 1 Antibody, PHLL1 Antibody
<b>Host</b>	CRY1 antibody was produced in Mouse
<b>Clonality:</b>	Monoclonal
<b>Isotype:</b>	IgG1,k
<b>Clone Name:</b>	4H4-1C4
<b>Immunogen Species:</b>	CRY1 antibody was raised against Human
<b>Immunogen:</b>	CRY1 antibody was raised against cRY1 (AAH30519, 1 a.a. ~ 587 a.a) full length recombinant protein with GST tag. MW of the GST tag alone is 26 KDa.
<b>Specificity:</b>	Human CRY1
<b>Reactivity:</b>	Human
<b>Purification:</b>	Protein A purified
<b>Presentation:</b>	PBS, pH 7.2
<b>Recommended Storage:</b>	Short term 4°C, long term aliquot and store at -20°C, avoid freeze thaw cycles.
<b>Usage Summary:</b>	Immunohistochemistry: Formalin-fixed paraffin-embedded sections. Sandwich ELISA: Recombinant protein. Western Blot: Cell lysate, Recombinant protein.
<b>Uses:</b>	IHC - Paraffin (10 µg/ml), Immunofluorescence (10 µg/ml), Western blot, ELISA (Optimal dilution to be determined by the researcher)
<b>Size:</b>	50 µg
<b>Concentration:</b>	0.4 mg/ml

**Immunohistochemistry Image:**



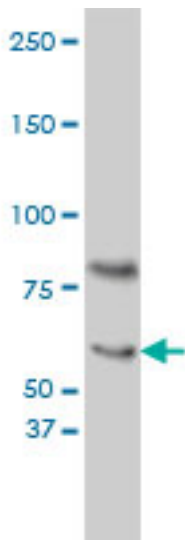
Anti-CRY1 antibody IHC of human breast. Immunohistochemistry of formalin-fixed, paraffin-embedded tissue after heat-induced antigen retrieval. Antibody LS-B5393 concentration 10 ug/ml.

**Immunofluorescence Image:**



Immunofluorescence of monoclonal antibody to CRY1 on HeLa cell. [antibody concentration 10 ug/ml]

**Western Blot Image:**



CRY1 monoclonal antibody, clone 4H4-1C4 Western blot of CRY1 expression in HeLa nuclear extract..

**Requested From:**

Japan

Laboratory Reagent For In Vitro Research Use Only

Not for resale without prior written consent from LifeSpan BioSciences, Inc.

Created on 9/24/2014

© 2014 LifeSpan BioSciences