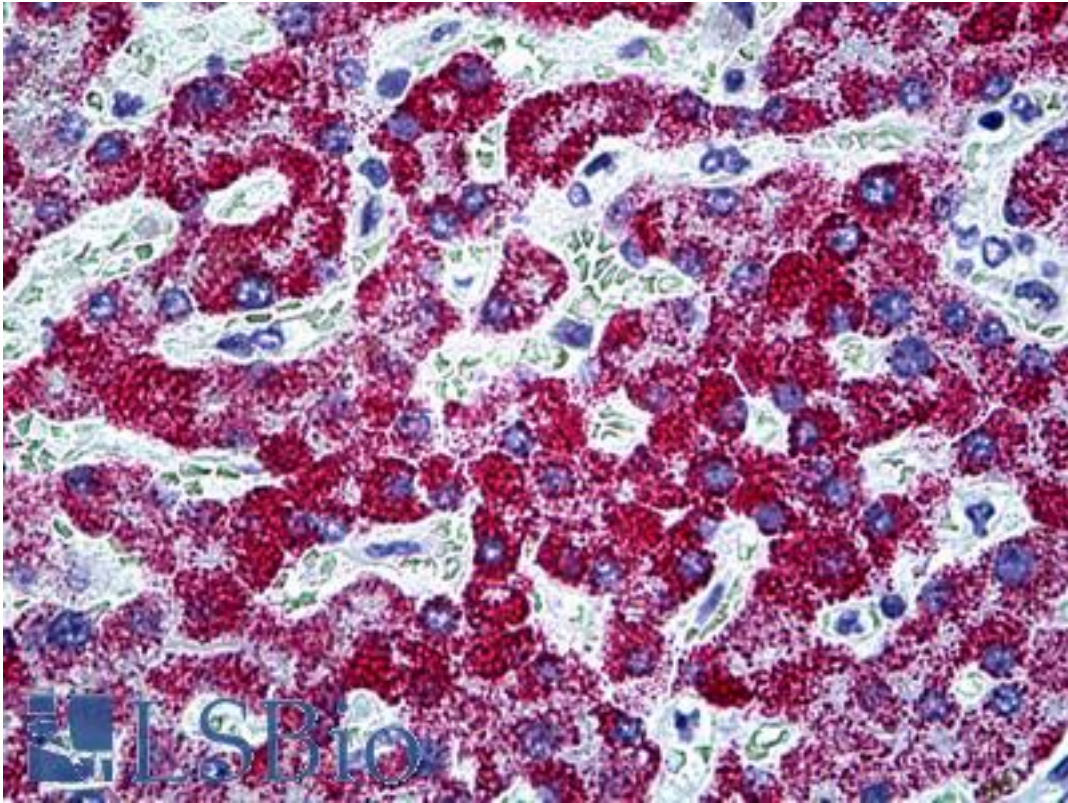


CPS1 Mouse anti-Human Monoclonal (8H8) Antibody - LS-B5392 - LSBio

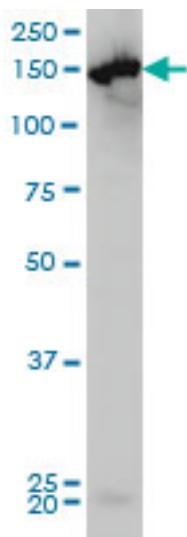
CatalogID:	LS-B5392
Validation:	This antibody replaces catalog number LS-C133131. It has been validated for use in the following assays: IHC-P.
Target:	carbamoyl-phosphate synthase 1, mitochondrial (CPS1)
Synonyms:	CPS1 Antibody, Carbamoyl-phosphate synthase Antibody, CPSase I Antibody, CPSASE1 Antibody
Host	CPS1 antibody was produced in Mouse
Clonality:	Monoclonal
Isotype:	IgG1,k
Clone Name:	8H8
Immunogen Species:	CPS1 antibody was raised against Human
Immunogen:	CPS1 antibody was raised against cPS1 (NP_001866, 1400 a.a. ~ 1501 a.a) partial recombinant protein with GST tag. MW of the GST tag alone is 26 KDa.
Specificity:	Human CPS1
Reactivity:	Human
Purification:	Protein A purified
Presentation:	PBS, pH 7.2. Sourced in Ascites.
Recommended Storage:	Short term 4°C, long term aliquot and store at -20°C, avoid freeze thaw cycles.
Usage Summary:	Immunohistochemistry: Formalin-fixed paraffin-embedded sections. Sandwich ELISA: Recombinant protein. Western Blot: Cell lysate, Recombinant protein.
Uses:	IHC - Paraffin (5 µg/ml), Western blot, ELISA (Optimal dilution to be determined by the researcher)
Size:	50 µg
Concentration:	0.44 mg/ml

Immunohistochemistry Image:



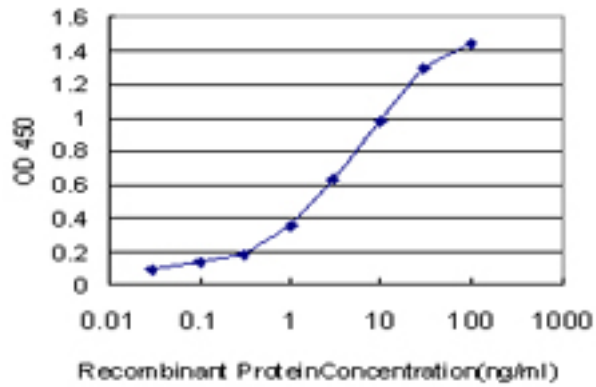
Anti-CPS1 antibody IHC of human liver. Immunohistochemistry of formalin-fixed, paraffin-embedded tissue after heat-induced antigen retrieval. Antibody LS-B5392 concentration 5 ug/ml.

Western Blot Image:



CPS1 monoclonal antibody, clone 8H8 Western blot of CPS1 expression in HeLa.

ELISA Image:



Detection limit for recombinant GST tagged CPS1 is approximately 0.03 ng/ml as a capture antibody.

Requested From:

Japan

Laboratory Reagent For In Vitro Research Use Only

Not for resale without prior written consent from LifeSpan BioSciences, Inc.

Created on 9/24/2014

© 2014 LifeSpan BioSciences