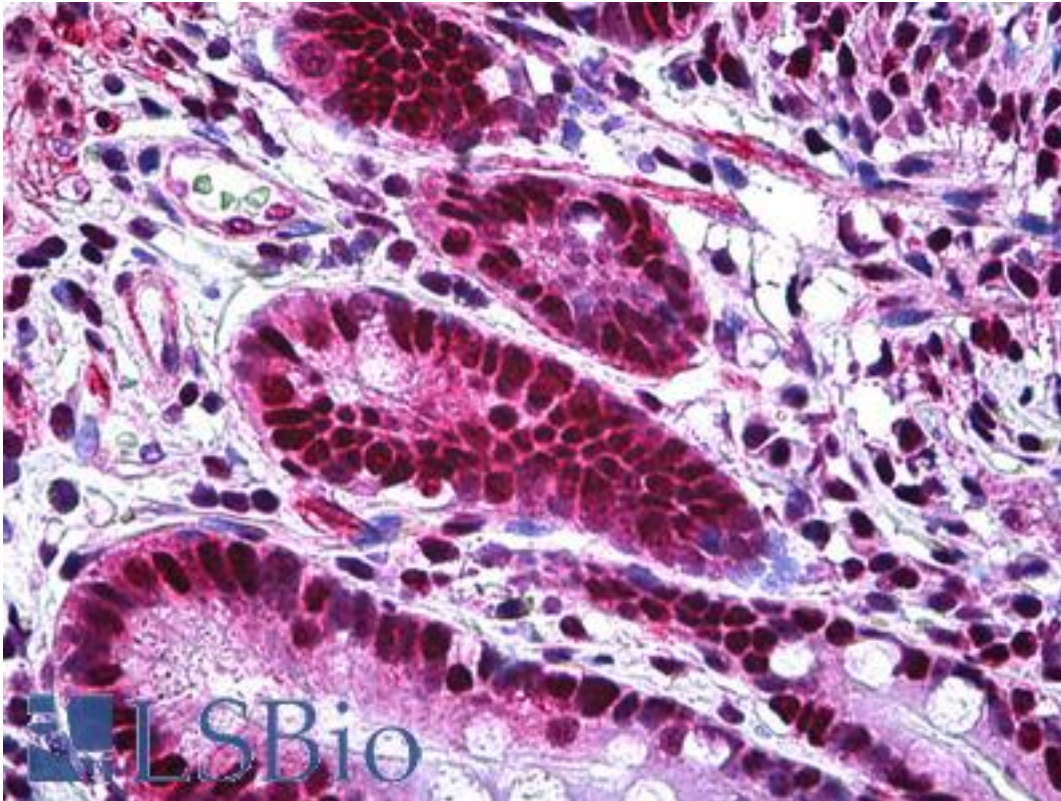


XRCC6 / Ku70 Mouse anti-Human Monoclonal (4C2-1A6) Antibody - LS-B5387 - LSBio

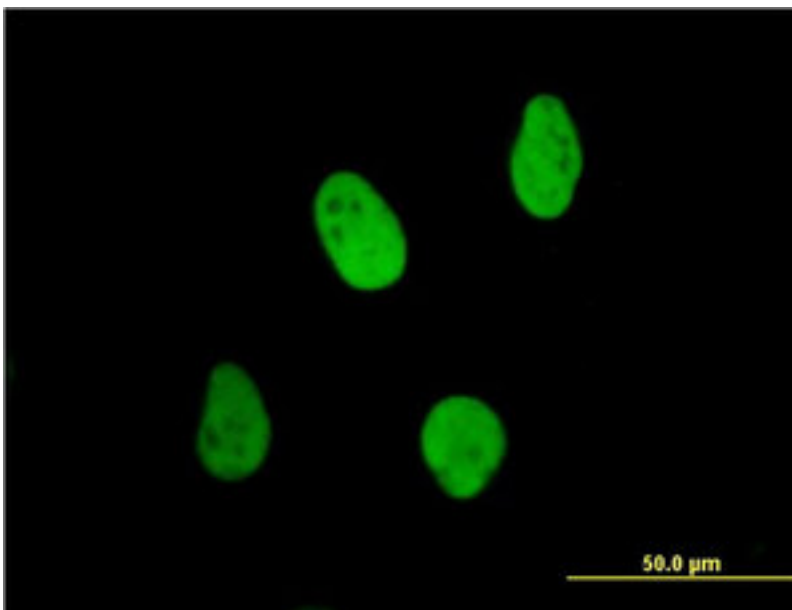
CatalogID:	LS-B5387
Validation:	This antibody replaces catalog number LS-C133211. It has been validated for use in the following assays: IHC-P.
Target:	X-ray repair complementing defective repair in Chinese hamster cells 6 (XRCC6)
Synonyms:	XRCC6 Antibody, 5-dRP lyase Ku70 Antibody, 70 kDa subunit of Ku antigen Antibody, CTCBF Antibody, DNA repair protein XRCC6 Antibody, D22S671 Antibody, D22S731 Antibody, G22P1 Antibody, Ku autoantigen, 70kDa Antibody, Ku autoantigen p70 subunit Antibody, Thyroid-lupus autoantigen p70 Antibody, TLA A Antibody, CTC75 Antibody, KU70 Antibody, ML8 Antibody, Thyroid-lupus autoantigen Antibody
Host	XRCC6 antibody was produced in Mouse
Clonality:	Monoclonal
Isotype:	IgG1,k
Clone Name:	4C2-1A6
Immunogen Species:	XRCC6 / Ku70 antibody was raised against Human
Immunogen:	XRCC6 / Ku70 antibody was raised against xRCC6 (AAH08343, 1 a.a. ~ 610 a.a) full length recombinant protein with GST tag. MW of the GST tag alone is 26 KDa.
Specificity:	Human XRCC6
Reactivity:	Human
Purification:	Protein A purified
Presentation:	PBS, pH 7.2. Sourced in Ascites.
Recommended Storage:	Short term 4°C, long term aliquot and store at -20°C, avoid freeze thaw cycles.
Usage Summary:	Immunohistochemistry: Formalin-fixed paraffin-embedded sections. Sandwich ELISA: Recombinant protein. Western Blot: Cell lysate, Transfected lysate, Recombinant protein.
Uses:	IHC - Paraffin (5 µg/ml), Immunofluorescence (10 µg/ml), Western blot (1:500 - 1:1000), ELISA (Optimal dilution to be determined by the researcher)
Size:	50 µg
Concentration:	0.5 mg/ml

Immunohistochemistry Image:



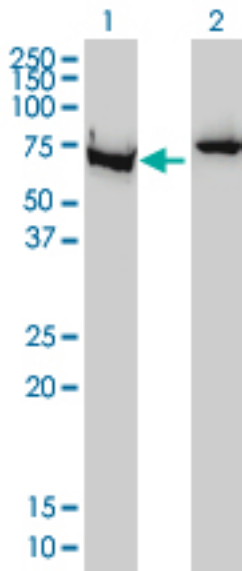
Anti-XRCC6 / Ku70 antibody IHC of human small intestine. Immunohistochemistry of formalin-fixed, paraffin-embedded tissue after heat-induced antigen retrieval. Antibody LS-B5387 concentration 5 ug/ml.

Immunofluorescence Image:



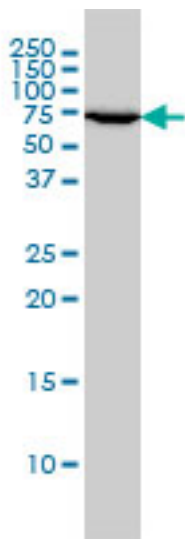
Immunofluorescence of monoclonal antibody to XRCC6 on HeLa cell. [antibody concentration 10 ug/ml]

Western Blot Image:



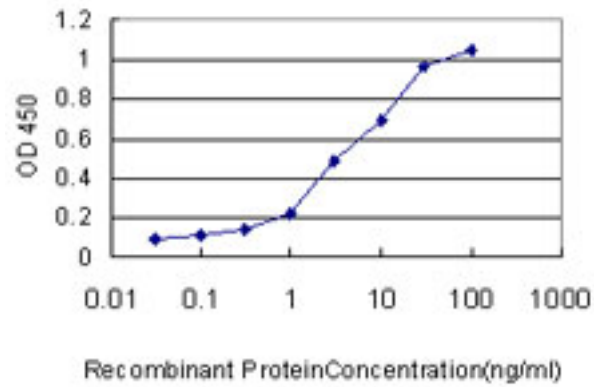
Western blot of XRCC6 expression in transfected 293T cell line by LS-B5387.

Western Blot Image:



XRCC6 monoclonal antibody LS-B5387 for Western blot of XRCC6 expression in C32.

ELISA Image:



Detection limit for recombinant GST tagged XRCC6 is approximately 0.1 ng/ml as a capture antibody.

Requested From:

Japan

Laboratory Reagent For In Vitro Research Use Only

Not for resale without prior written consent from LifeSpan BioSciences, Inc.

Created on 9/24/2014

© 2014 LifeSpan BioSciences