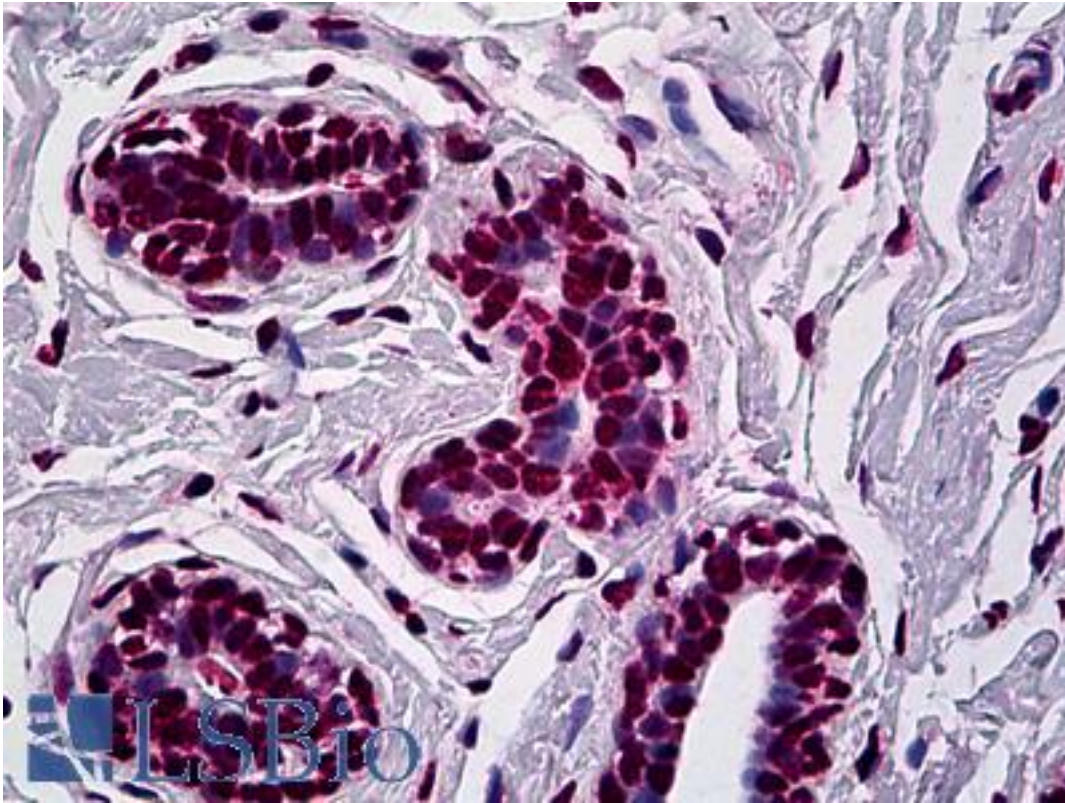


AML1 / RUNX1 Mouse anti-Human Monoclonal (3A1) Antibody - LS-B5382 - LSBio

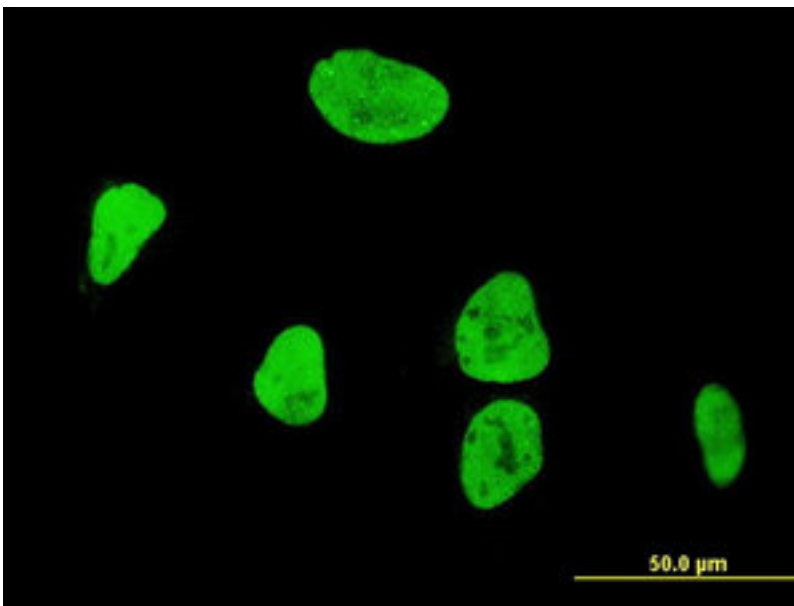
CatalogID:	LS-B5382
Validation:	This antibody replaces catalog number LS-C133011. It has been validated for use in the following assays: IHC-P.
Target:	runt-related transcription factor 1 (RUNX1)
Synonyms:	RUNX1 Antibody, AMLCR1 Antibody, Aml1 oncogene Antibody, AML1 Antibody, AML1-EVI-1 Antibody, CBF-alpha-2 Antibody, CBFA2 Antibody, Acute myeloid leukemia 1 Antibody, EVI-1 Antibody, PEBP2A2 Antibody, PEA2-alpha B Antibody, AML1-EVI-1 fusion protein Antibody, Oncogene AML-1 Antibody, PEBP2-alpha B Antibody, PEBP2aB Antibody
Host	RUNX1 antibody was produced in Mouse
Clonality:	Monoclonal
Isotype:	IgG2b,k
Clone Name:	3A1
Immunogen Species:	AML1 / RUNX1 antibody was raised against Human
Immunogen:	AML1 / RUNX1 antibody was raised against rUNX1 (NP_001001890, 210 a.a. ~ 311 a.a) partial recombinant protein with GST tag. MW of the GST tag alone is 26 KDa.
Specificity:	Human RUNX1
Reactivity:	Human
Purification:	Protein A purified
Presentation:	PBS, pH 7.2
Recommended Storage:	Short term 4°C, long term aliquot and store at -20°C, avoid freeze thaw cycles.
Usage Summary:	Immunohistochemistry: Formalin-fixed paraffin-embedded sections. Western Blot: Recombinant protein.
Uses:	IHC - Paraffin (5 µg/ml), Immunofluorescence (10 µg/ml), Western blot, ELISA (Optimal dilution to be determined by the researcher)
Size:	50 µg
Concentration:	0.45 mg/ml

Immunohistochemistry Image:



Anti-RUNX1 antibody IHC of human breast. Immunohistochemistry of formalin-fixed, paraffin-embedded tissue after heat-induced antigen retrieval. Antibody LS-B5382 concentration 5 ug/ml.

Immunofluorescence Image:



Immunofluorescence of monoclonal antibody to RUNX1 on HeLa cell. [antibody concentration 10 ug/ml].

Requested From:

Japan

Laboratory Reagent For In Vitro Research Use Only

Not for resale without prior written consent from LifeSpan BioSciences, Inc.

Created on 9/24/2014

© 2014 LifeSpan BioSciences