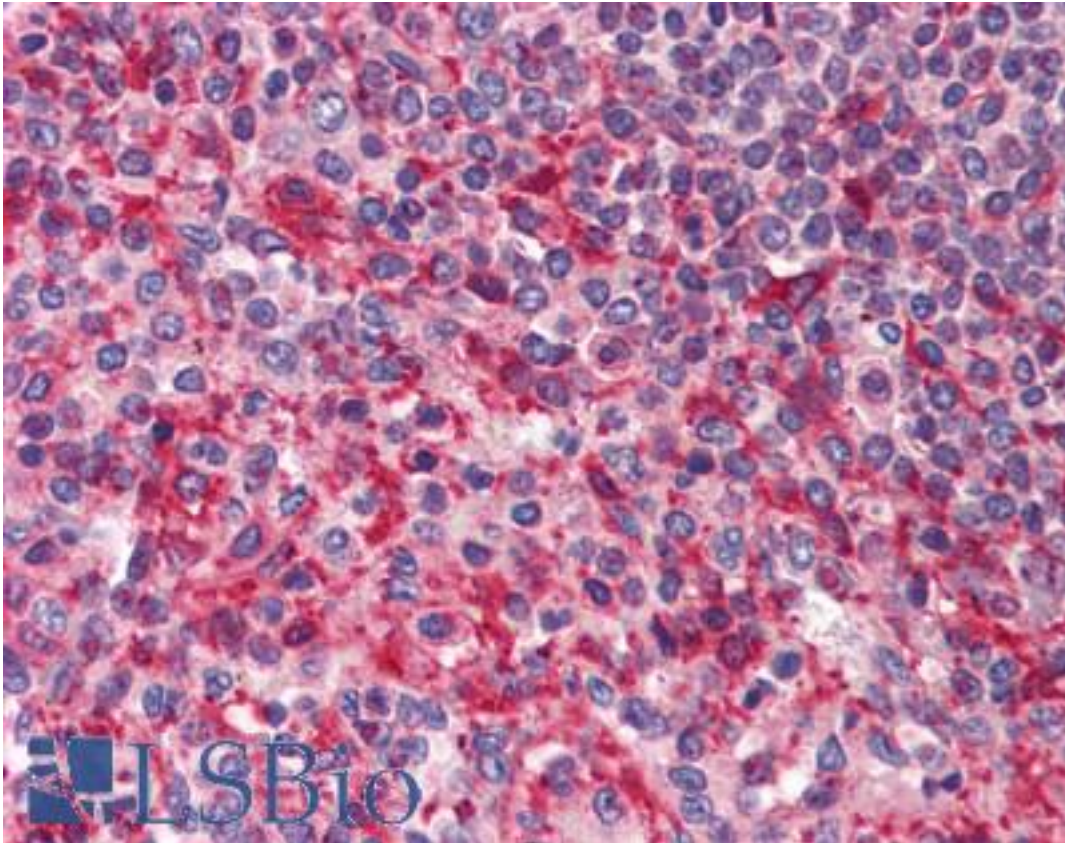


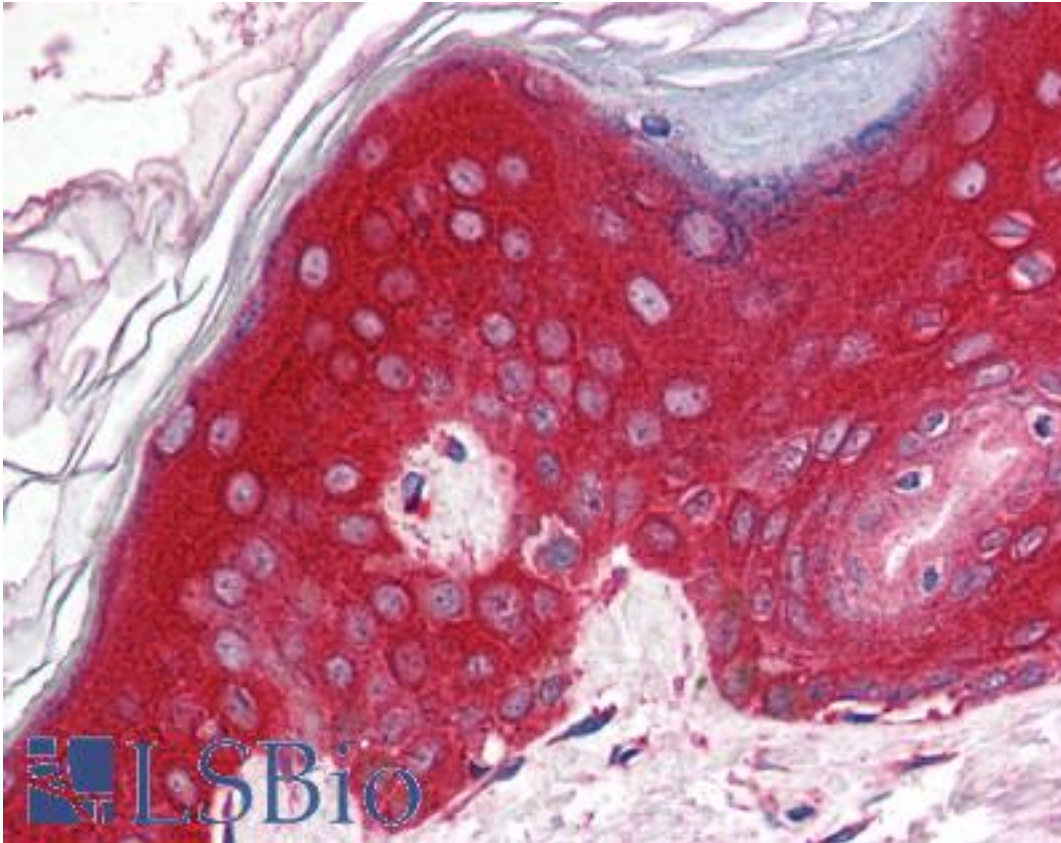
PAK4 Rabbit anti-Human Polyclonal (Internal) Antibody - LS-B538 - LSBio	
CatalogID:	LS-B538
Validation:	This antibody replaces catalog number LS-C19476. It has been validated for use in the following assays: IHC.
Target:	p21 protein (Cdc42/Rac)-activated kinase 4 (PAK4)
Synonyms:	PAK4 Antibody, KIAA1142 Antibody, p21(CDKN1A)-activated kinase 4 Antibody, PAK-4 Antibody, p21-activated kinase 4 Antibody
Family / Subfamily:	Protein Kinase / PAK (STE20)
Host	PAK4 antibody was produced in Rabbit
Clonality:	Polyclonal
Immunogen Species:	PAK4 antibody was raised against Human
Antigen Type:	Synthetic peptide
Immunogen:	PAK4 antibody was raised against synthetic peptide from human PAK4.
Specificity:	13 amino acid peptide from near the center of human PAK4
Epitope:	Internal
Reactivity:	Human
Purification:	Immunoaffinity purified
Presentation:	PBS, 0.02% sodium azide.
Recommended Storage:	Short term 4°C, long term aliquot and store at -20°C, avoid freeze thaw cycles. Store undiluted.
Usage Summary:	Immunohistochemistry: LS-B538 was validated for use in immunohistochemistry on a panel of 21 formalin-fixed, paraffin-embedded (FFPE) human tissues after heat induced antigen retrieval in pH 6.0 citrate buffer. After incubation with the primary antibody, slides were incubated with biotinylated secondary antibody, followed by alkaline phosphatase-streptavidin and chromogen. The stained slides were evaluated by a pathologist to confirm staining specificity. The optimal working concentration for LS-B538 was determined to be 2.5 ug/ml.
Uses:	IHC - Paraffin (2.5 µg/ml), Western blot (1 - 2 µg/ml) (Optimal dilution to be determined by the researcher)
Size:	50 µg
Concentration:	1 mg/ml

Immunohistochemistry Image:



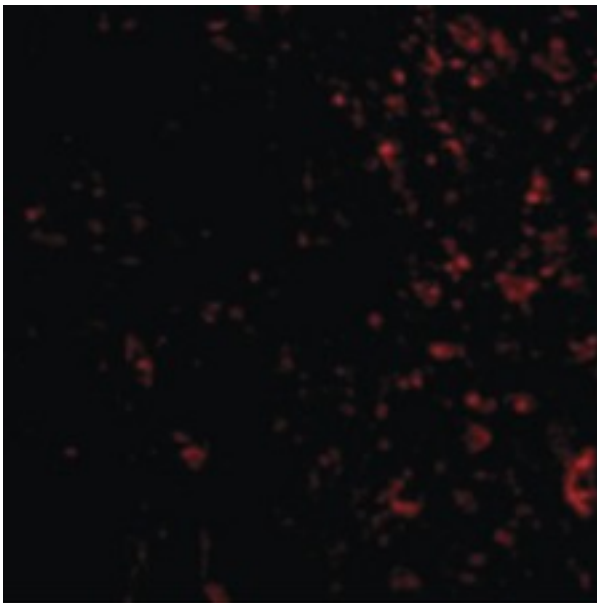
Anti-PAK4 antibody IHC of human spleen. Immunohistochemistry of formalin-fixed, paraffin-embedded tissue after heat-induced antigen retrieval. Antibody LS-B538 concentration 5 ug/ml.

Immunohistochemistry Image:



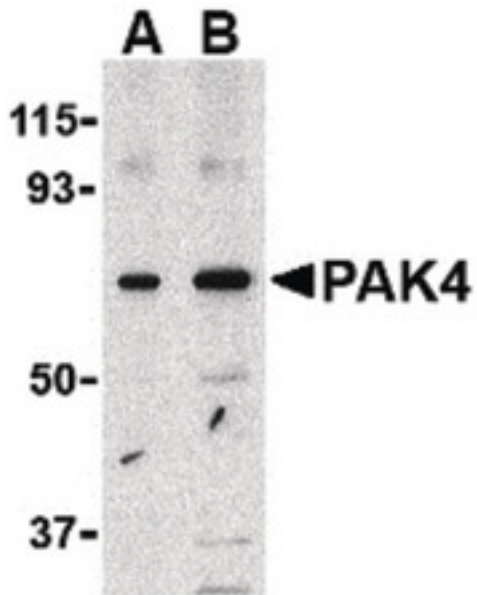
Anti-PAK4 antibody IHC of human skin. Immunohistochemistry of formalin-fixed, paraffin-embedded tissue after heat-induced antigen retrieval. Antibody LS-B538 concentration 5 ug/ml.

Immunofluorescence Image:



Immunofluorescence of PAK4 in Human Colon cells with PAK4 antibody at 20 ug/ml.

Western Blot Image:



Western blot of PAK4 in SW480 lysate with PAK4 antibody at (A) 1 and (B) 2 ug/ml.

Requested From:

Japan

Laboratory Reagent For In Vitro Research Use Only

Not for resale without prior written consent from LifeSpan BioSciences, Inc.

Created on 9/24/2014

© 2014 LifeSpan BioSciences