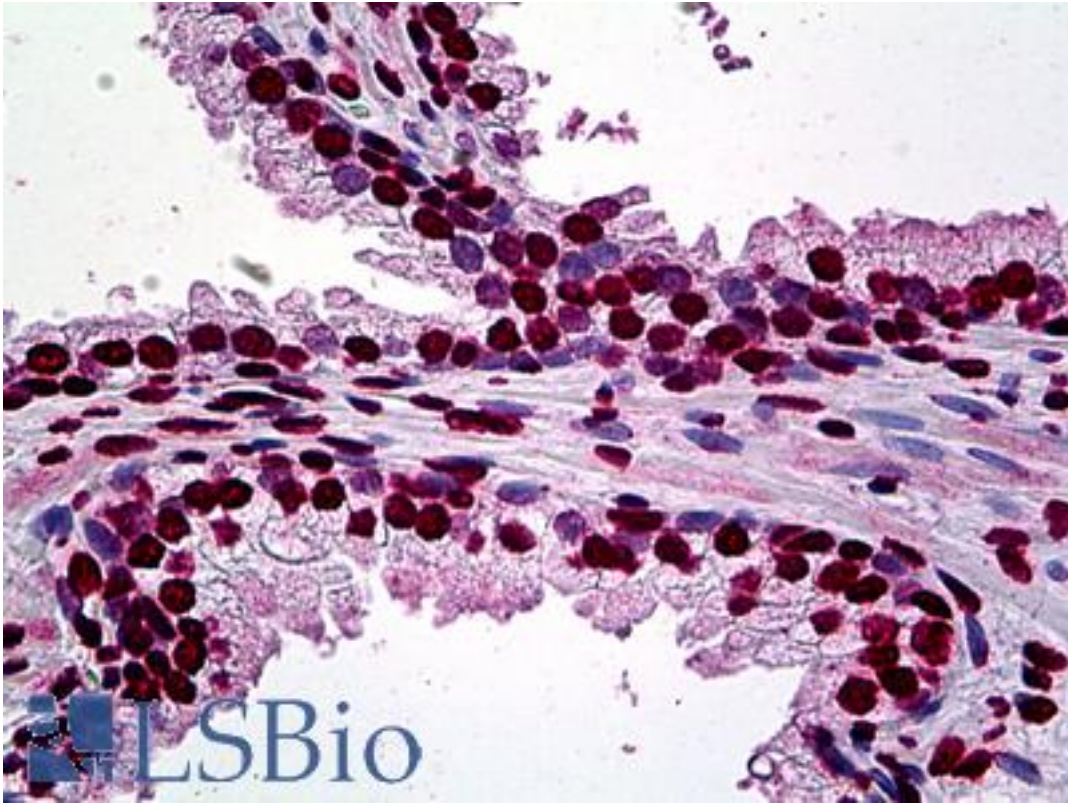


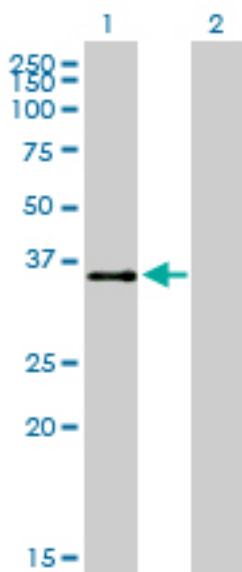
ATF1 Mouse anti-Human Monoclonal (3E7) Antibody - LS-B5378 - LSBio	
<b>CatalogID:</b>	LS-B5378
<b>Validation:</b>	This antibody replaces catalog number LS-C133056. It has been validated for use in the following assays: IHC-P.
<b>Target:</b>	activating transcription factor 1 (ATF1)
<b>Synonyms:</b>	ATF1 Antibody, ATF-1 Antibody, EWS-ATF1 Antibody, FUS/ATF-1 Antibody, Protein TREB36 Antibody, TREB36 Antibody
<b>Family / Subfamily:</b>	Transcription factor / not assigned-Transcription factor
<b>Host</b>	ATF1 antibody was produced in Mouse
<b>Clonality:</b>	Monoclonal
<b>Isotype:</b>	IgG1,k
<b>Clone Name:</b>	3E7
<b>Immunogen Species:</b>	ATF1 antibody was raised against Human
<b>Immunogen:</b>	ATF1 antibody was raised against aTF1 (AAH29619, 1 a.a. ~ 272 a.a) full-length recombinant protein with GST tag. MW of the GST tag alone is 26 KDa.
<b>Specificity:</b>	Human ATF1
<b>Reactivity:</b>	Human
<b>Purification:</b>	Protein A purified
<b>Presentation:</b>	PBS, pH 7.2. Sourced in Ascites.
<b>Recommended Storage:</b>	Store at -20°C or lower. Aliquot to avoid repeated freezing and thawing.
<b>Usage Summary:</b>	Immunohistochemistry: Formalin-fixed paraffin-embedded sections. RNAi Knockdown: Antibody validated. Sandwich ELISA: Recombinant protein. Western Blot: Transfected lysate, Recombinant protein.
<b>Uses:</b>	IHC - Paraffin (2.5 µg/ml), Western blot, ELISA (Optimal dilution to be determined by the researcher)
<b>Size:</b>	50 µg
<b>Concentration:</b>	0.5 mg/ml

**Immunohistochemistry Image:**



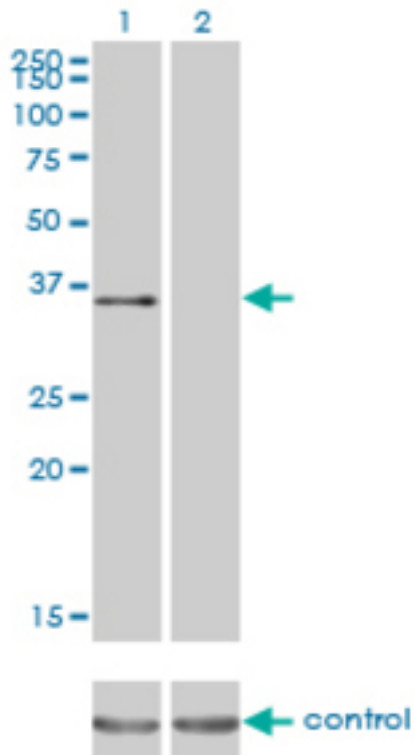
Anti-ATF1 antibody IHC of human prostate. Immunohistochemistry of formalin-fixed, paraffin-embedded tissue after heat-induced antigen retrieval. Antibody LS-B5378 concentration 2.5 ug/ml.

**Western Blot Image:**



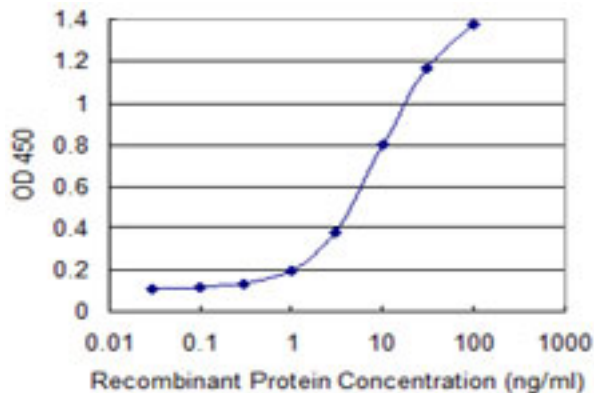
Western blot of ATF1 expression in transfected 293T cell line by ATF1 monoclonal antibody (M03), clone 3E7.

**RNA interference Image:**



Western blot of ATF1 over-expressed 293 cell line, cotransfected with ATF1 Validated Chimera RNAi (Lane 2) or non-transfected control (Lane 1). Blot probed with ATF1 monoclonal antibody (3E7). GAPDH (36.1 kD) used as specificity and loading control.

**ELISA Image:**



Detection limit for recombinant GST tagged ATF1 is 0.3 ng/ml as a capture antibody.

Requested From:

Japan

Laboratory Reagent For In Vitro Research Use Only

Not for resale without prior written consent from LifeSpan BioSciences, Inc.

Created on 9/24/2014

© 2014 LifeSpan BioSciences