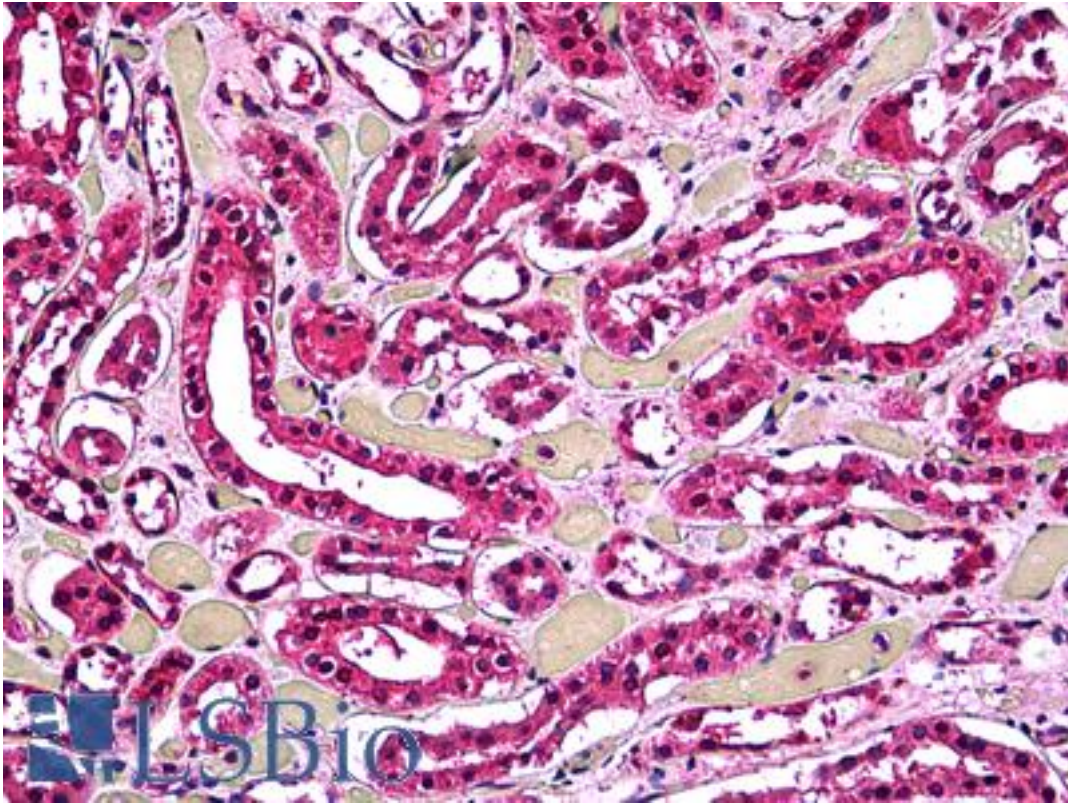


ACP2 / Acid Phosphatase 2 Mouse anti-Human Monoclonal (M1-4A12) Antibody - LS-B5373 - LSBio

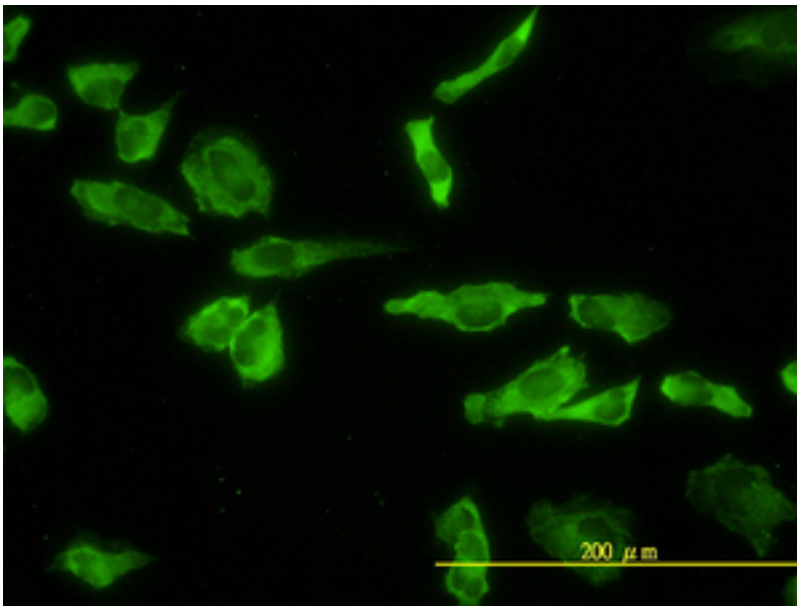
CatalogID:	LS-B5373
Validation:	This antibody replaces catalog number LS-C133028. It has been validated for use in the following assays: IHC-P.
Target:	acid phosphatase 2, lysosomal (ACP2)
Synonyms:	ACP2 Antibody, Acid Phosphatase 2 Antibody, Acid phosphatase 2, lysosomal Antibody, LAP Antibody, Lysosomal acid phosphatase Antibody
Host	ACP2 antibody was produced in Mouse
Clonality:	Monoclonal
Isotype:	IgG2b,I
Clone Name:	M1-4A12
Immunogen Species:	ACP2 / Acid Phosphatase 2 antibody was raised against Human
Immunogen:	ACP2 / Acid Phosphatase 2 antibody was raised against aCP2 (AAH03160, 1 a.a. ~ 424 a.a) full length recombinant protein with GST tag. MW of the GST tag alone is 26 KDa.
Specificity:	Human ACP2
Reactivity:	Human
Purification:	Protein A purified
Presentation:	PBS, pH 7.2
Recommended Storage:	Short term 4°C, long term aliquot and store at -20°C, avoid freeze thaw cycles.
Usage Summary:	Immunohistochemistry: Formalin-fixed paraffin-embedded sections. RNAi Knockdown: Antibody validated. Western Blot: Transfected lysate, Recombinant protein.
Uses:	IHC - Paraffin (10 µg/ml), Immunofluorescence (10 µg/ml), Western blot, ELISA (Optimal dilution to be determined by the researcher)
Size:	50 µg
Concentration:	0.41 mg/ml

Immunohistochemistry Image:



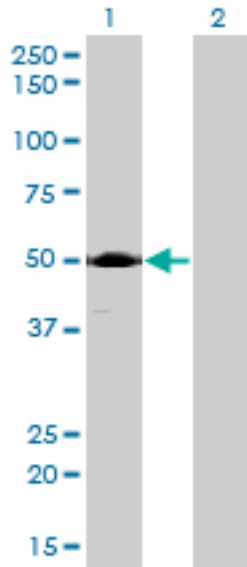
Anti-ACP2 / Acid Phosphatase 2 antibody IHC of human kidney, tubules. Immunohistochemistry of formalin-fixed, paraffin-embedded tissue after heat-induced antigen retrieval. Antibody LS-B5373 concentration 10 ug/ml.

Immunofluorescence Image:



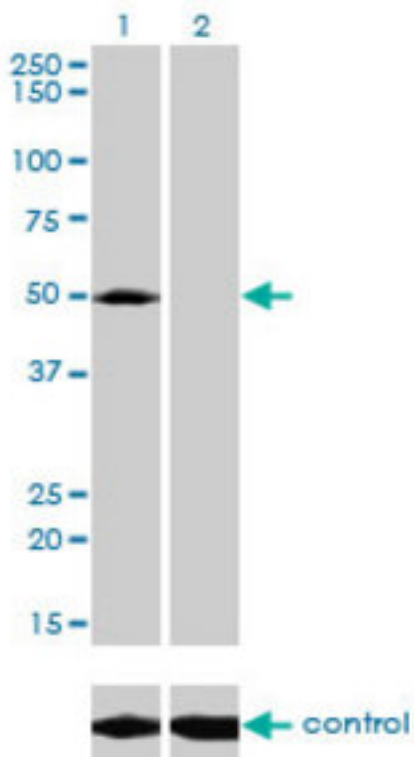
Immunofluorescence of monoclonal antibody to ACP2 on HeLa cell. [antibody concentration 10 ug/ml]

Western Blot Image:



Western blot of ACP2 expression in transfected 293T cell line by ACP2 monoclonal antibody (M01), clone M1-4A12.

RNA interference Image:



Western blot of ACP2 over-expressed 293 cell line, cotransfected with ACP2 Validated Chimera RNAi (Lane 2) or non-transfected control (Lane 1). Blot probed with ACP2 monoclonal antibody, clone M1-4A12. GAPDH (36.1 kD) used as specificity and loading control.

Requested From:

Japan

Laboratory Reagent For In Vitro Research Use Only

Not for resale without prior written consent from LifeSpan BioSciences, Inc.

Created on 9/24/2014

© 2014 LifeSpan BioSciences