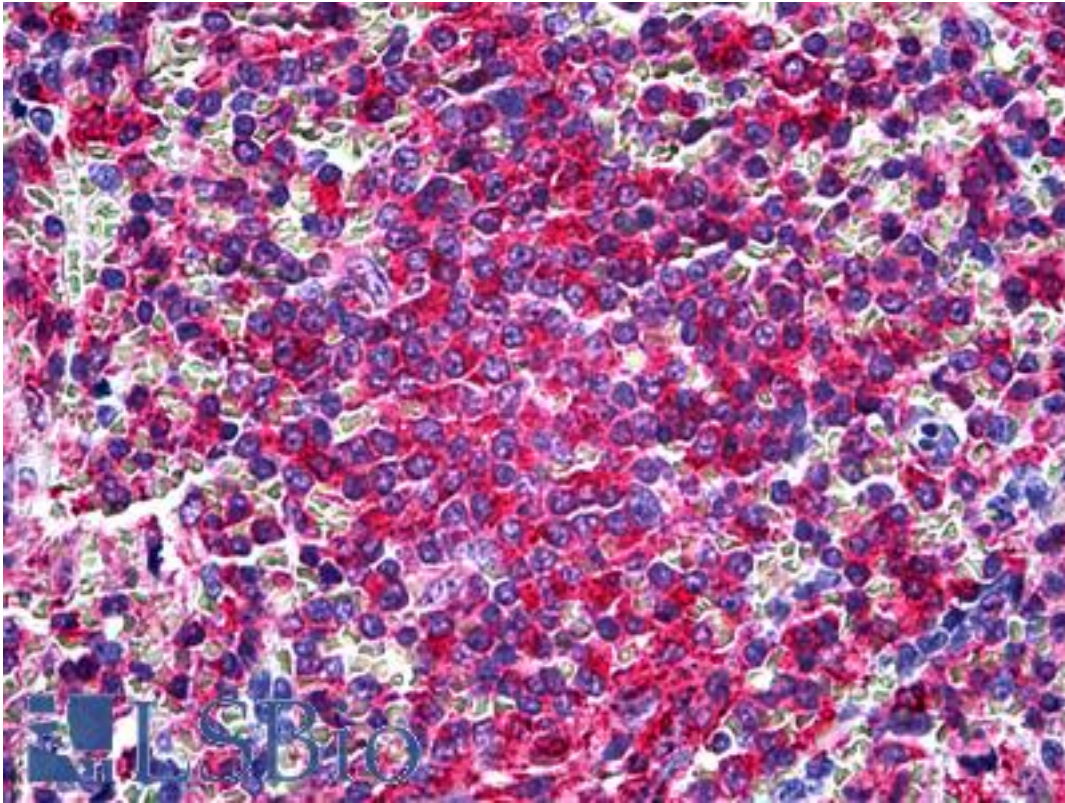


LCP1 / L-Plastin Mouse anti-Human Monoclonal (Headpiece Region) Antibody - LS-B5367 - LSBio	
CatalogID:	LS-B5367
Validation:	This antibody replaces catalog number LS-C26109. It has been validated for use in the following assays: IHC-P.
Target:	lymphocyte cytosolic protein 1 (L-plastin) (LCP1)
Synonyms:	LCP1 Antibody, CP64 Antibody, L Plastin Antibody, LCP-1 Antibody, LC64P Antibody, Lymphocyte cytosolic protein 1 Antibody, PLS2 Antibody, L-PLASTIN Antibody, Plastin 2 Antibody, Plastin-2 Antibody
Host	LCP1 antibody was produced in Mouse
Clonality:	Monoclonal
Isotype:	IgG1
Immunogen Species:	LCP1 / L-Plastin antibody was raised against Human
Immunogen:	LCP1 / L-Plastin antibody was raised against human recombinant L-plastin protein. Cellular Localization: Cytoplasmic MW of Antigen: 62kD Epitope: Headpiece region.
Specificity:	Recognizes LPL in Ca ²⁺ independent fashion. Does not cross-react with T-or I-plastin. Species cross-reactivity: Human. Does not cross react with mouse.
Epitope:	Headpiece Region
Reactivity:	Human
Purification:	Protein G purified
Presentation:	PBS, pH 7.4, 0.2% BSA, 0.09% sodium azide.
Recommended Storage:	May be stored at 4°C for short-term only. Aliquot to avoid repeated freezing and thawing. Store at -20°C. Aliquots are stable for at least 12 months
Usage Summary:	Suitable for use in Western Blot, Immunofluorescence, IHC-FFPE and Immunoprecipitation. Western Blot: 1-2 ug/ml for 2h at RT. Immunofluorescence: Fixed in methanol or 3% paraformaldehyde. Immunoprecipitation (Native): 2 ug/mg protein lysate using Protein G. Positive control: Human polymorphonuclear neutrophils and monocytes, MCF-7, Jurkat cells.
Uses:	IHC - Paraffin (1:50), Immunofluorescence, Western blot (1 - 2 µg/ml), Immunoprecipitation (Optimal dilution to be determined by the researcher)
Size:	250 µl
Concentration:	0.2 mg/ml

Immunohistochemistry Image:



Anti-L Plastin antibody IHC of human spleen. Immunohistochemistry of formalin-fixed, paraffin-embedded tissue after heat-induced antigen retrieval. Antibody LS-B5367 dilution 1:50.

Requested From:

Japan

Laboratory Reagent For In Vitro Research Use Only

Not for resale without prior written consent from LifeSpan BioSciences, Inc.

Created on 9/24/2014

© 2014 LifeSpan BioSciences