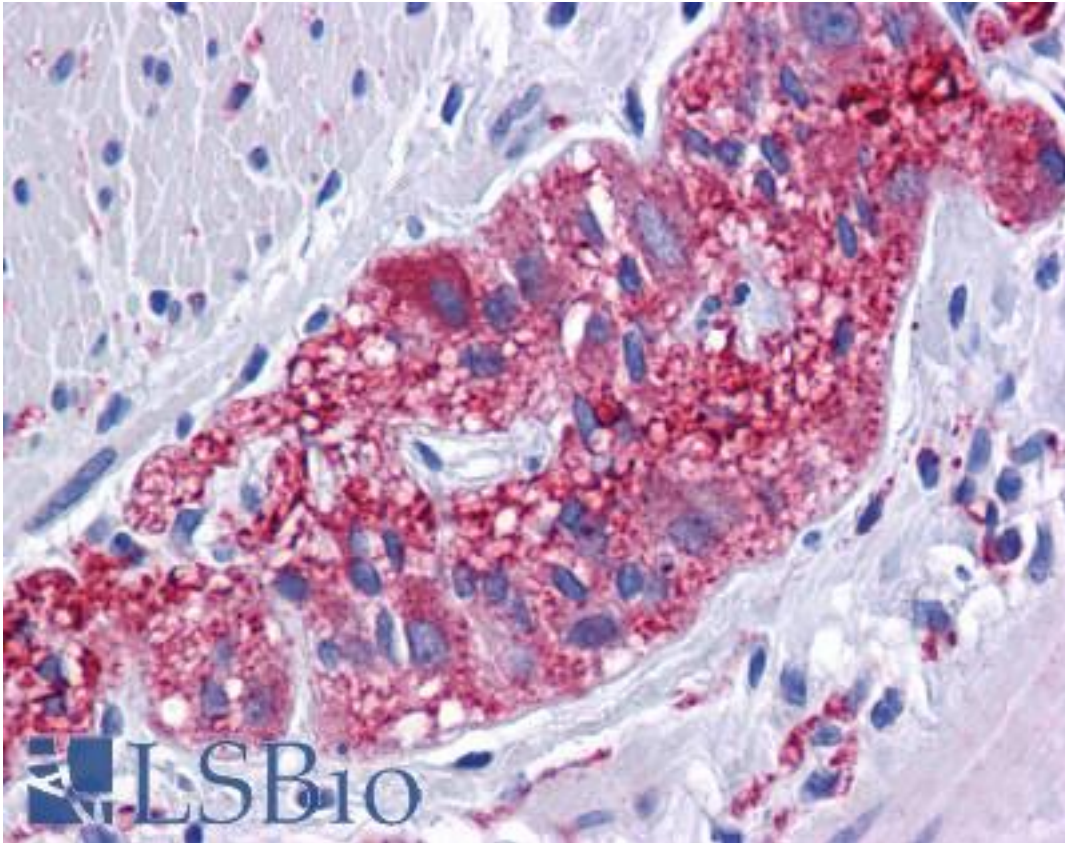


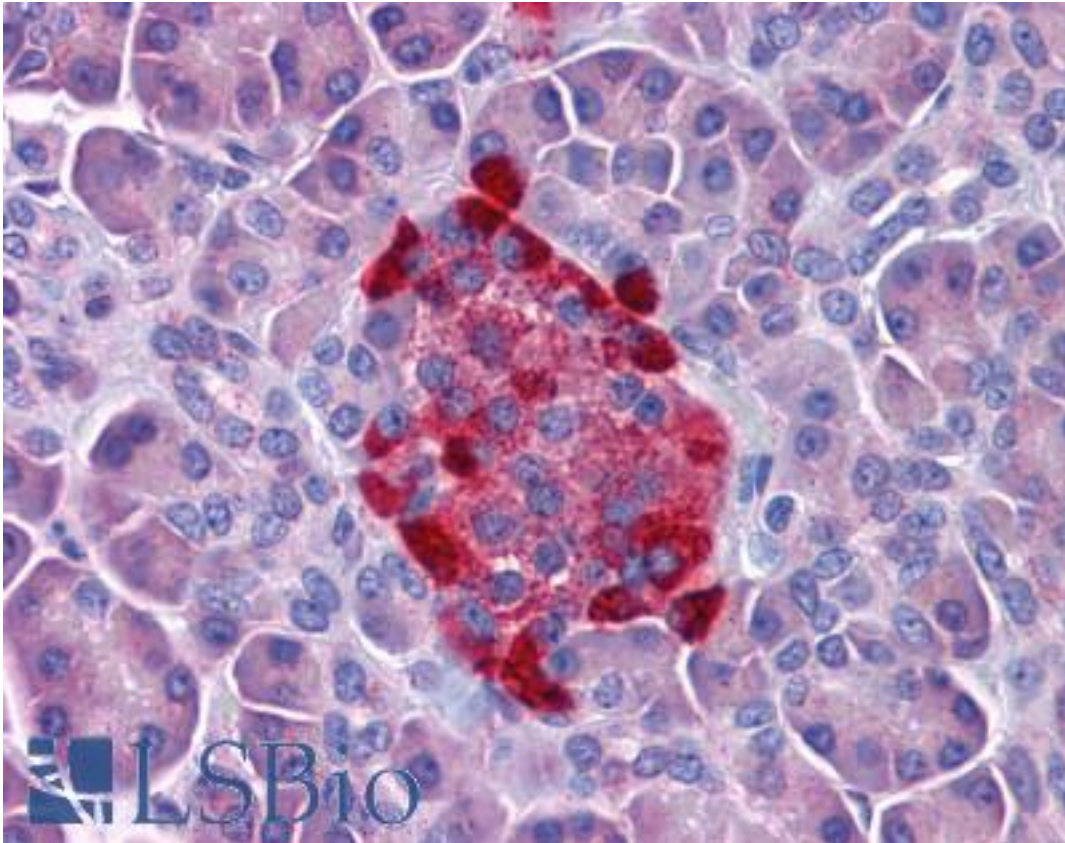
MFSD1 Rabbit anti-Human Polyclonal (Internal) Antibody - LS-B5347 - LSBio	
<b>CatalogID:</b>	LS-B5347
<b>Validation:</b>	This antibody replaces catalog number LS-C115919. It has been validated for use in the following assays: IHC-P.
<b>Target:</b>	major facilitator superfamily domain containing 1 (MFSD1)
<b>Synonyms:</b>	MFSD1 Antibody, SMAP-4 Antibody, SMAP4 Antibody, UG0581B09 Antibody
<b>Host</b>	MFSD1 antibody was produced in Rabbit
<b>Clonality:</b>	Polyclonal
<b>Immunogen Species:</b>	MFSD1 antibody was raised against Human
<b>Antigen Type:</b>	Synthetic peptide
<b>Immunogen:</b>	MFSD1 antibody was raised against an 18 amino acid peptide near the center of human MFSD1.
<b>Specificity:</b>	Human MFSD1
<b>Epitope:</b>	Internal
<b>Reactivity:</b>	Human, Mouse, Rat
<b>Purification:</b>	Immunoaffinity purified
<b>Presentation:</b>	PBS, 0.02% sodium azide
<b>Recommended Storage:</b>	Short term 4°C, long term aliquot and store at -20°C, avoid freeze thaw cycles. Store undiluted.
<b>Usage Summary:</b>	MFSD1 antibody can be used for detection of MFSD1 by Western blot at 1-2 µg/ml.
<b>Uses:</b>	IHC - Paraffin (5 µg/ml), Western blot (1 - 2 µg/ml), ELISA (Optimal dilution to be determined by the researcher)
<b>Size:</b>	50 µg
<b>Concentration:</b>	1 mg/ml

**Immunohistochemistry Image:**



Anti-MFSD1 antibody IHC of human colon, myenteric plexus. Immunohistochemistry of formalin-fixed, paraffin-embedded tissue after heat-induced antigen retrieval. Antibody LS-B5347 concentration 5 ug/ml.

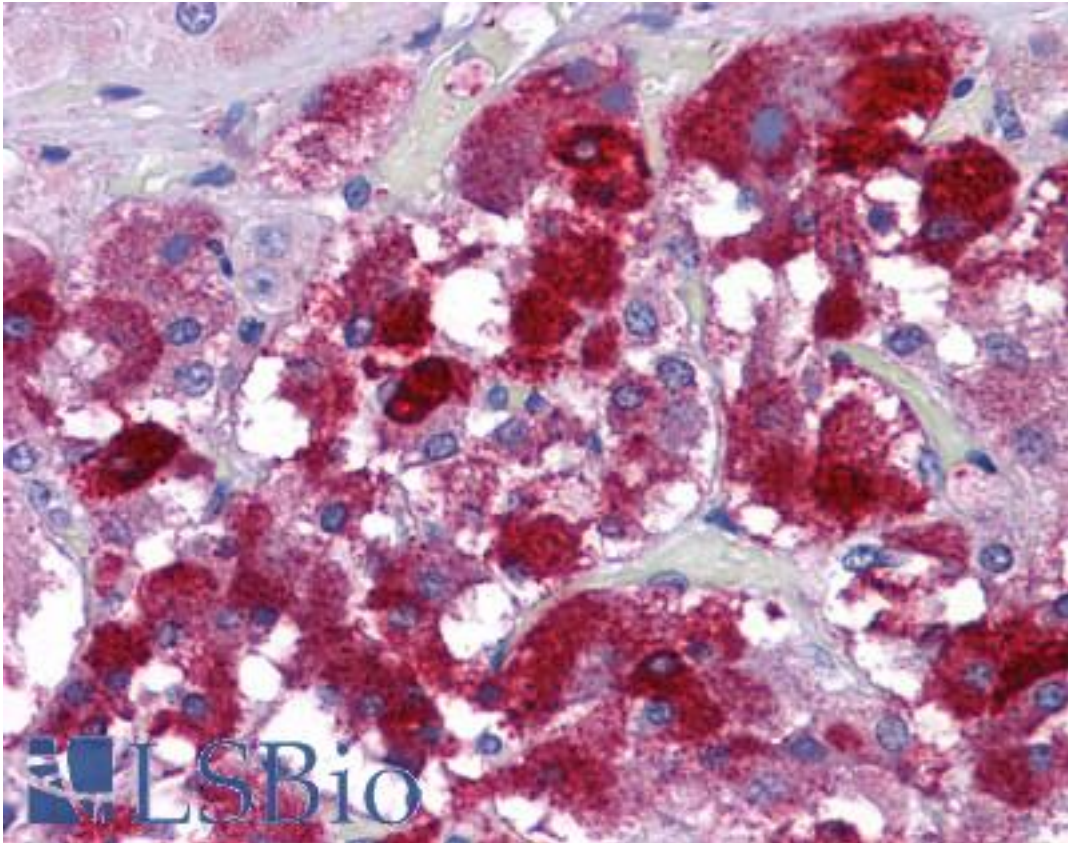
**Immunohistochemistry Image:**



Anti-MFS1 antibody IHC of human pancreas. Immunohistochemistry of formalin-fixed, paraffin-embedded tissue after heat-induced antigen retrieval. Antibody LS-B5347 concentration 5 ug/ml.

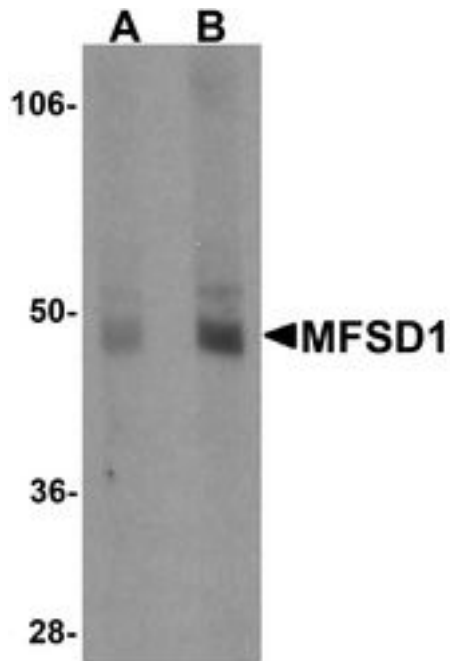


**Immunohistochemistry Image:**



Anti-MFSD1 antibody IHC of human adrenal. Immunohistochemistry of formalin-fixed, paraffin-embedded tissue after heat-induced antigen retrieval. Antibody LS-B5347 concentration 5 ug/ml.

**Western Blot Image:**



Western blot analysis of MFSD1 in human lung tissue lysate with MFSD1 antibody at (A) 1 and (B) 2 ug/ml.

**Requested From:**

Japan

Laboratory Reagent For In Vitro Research Use Only

Not for resale without prior written consent from LifeSpan BioSciences, Inc.

Created on 9/24/2014

© 2014 LifeSpan BioSciences