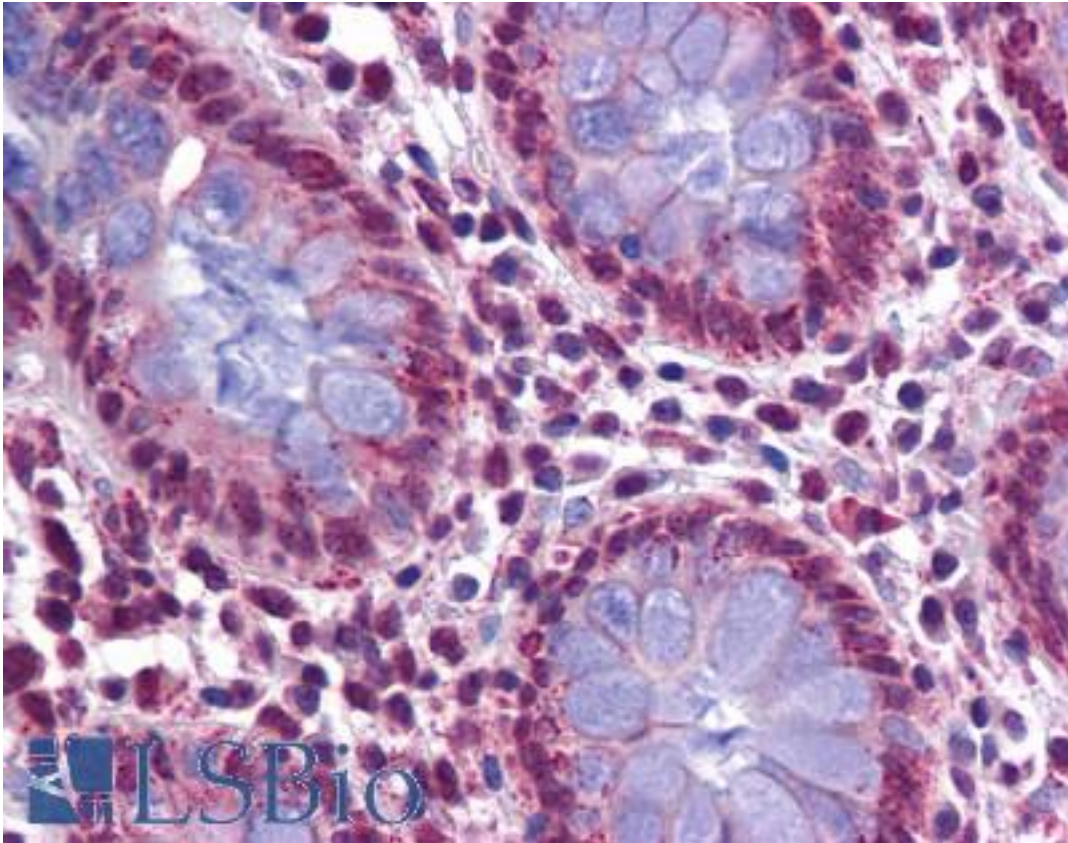


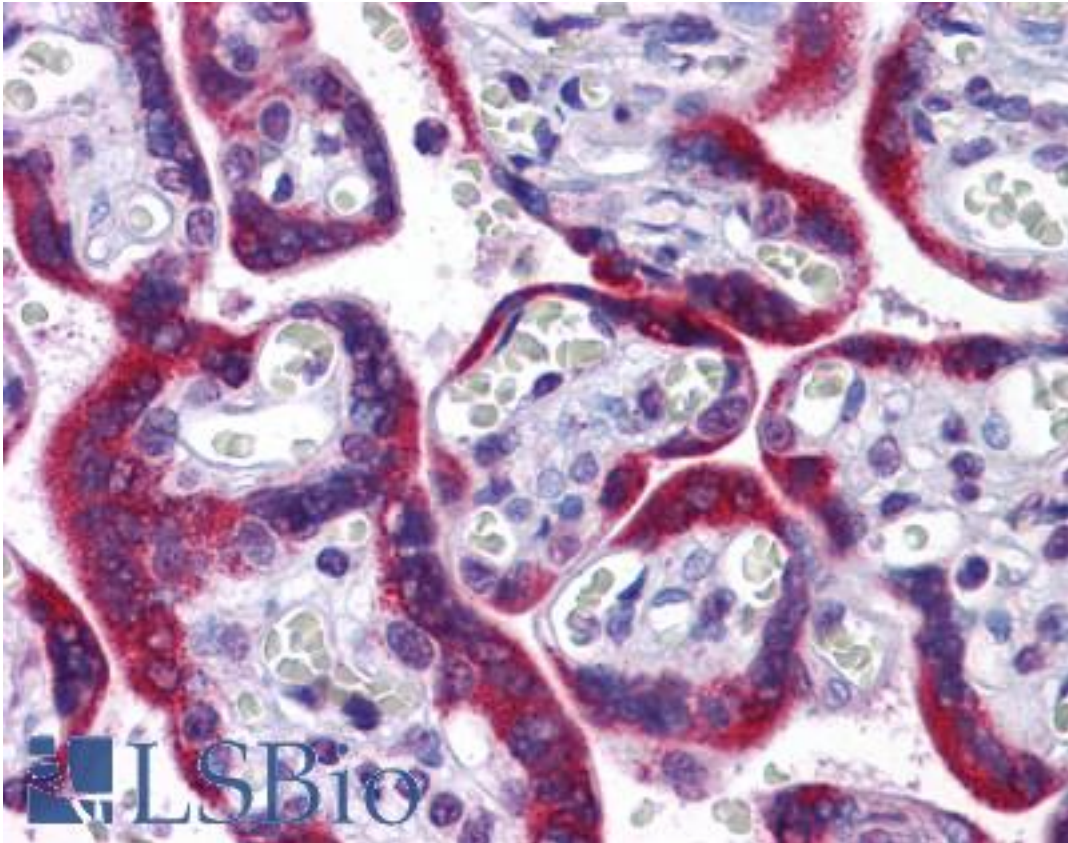
QIP1 / KPNA4 Rabbit anti-Human Polyclonal (N-Terminus) Antibody - LS-B5342 - LSBio	
<b>CatalogID:</b>	LS-B5342
<b>Validation:</b>	This antibody replaces catalog number LS-C115911. It has been validated for use in the following assays: IHC-P.
<b>Target:</b>	karyopherin alpha 4 (importin alpha 3) (KPNA4)
<b>Synonyms:</b>	KPNA4 Antibody, Importin subunit alpha-4 Antibody, Importin alpha Q1 Antibody, Karyopherin subunit alpha-4 Antibody, SRP3 Antibody, IPOA3 Antibody, QIP1 Antibody
<b>Host</b>	KPNA4 antibody was produced in Rabbit
<b>Clonality:</b>	Polyclonal
<b>Immunogen Species:</b>	QIP1 / KPNA4 antibody was raised against Human
<b>Antigen Type:</b>	Synthetic peptide
<b>Immunogen:</b>	QIP1 / KPNA4 antibody was raised against a 15 amino acid peptide near the amino terminus of human KPNA4.
<b>Specificity:</b>	Human KPNA4
<b>Epitope:</b>	N-Terminus
<b>Reactivity:</b>	Human, Mouse, Rat
<b>Purification:</b>	Immunoaffinity purified
<b>Presentation:</b>	PBS, 0.02% sodium azide
<b>Recommended Storage:</b>	Short term 4°C, long term aliquot and store at -20°C, avoid freeze thaw cycles. Store undiluted.
<b>Usage Summary:</b>	KPNA4 antibody can be used for detection of KPNA4 by Western blot at 1-2 ug/ml.
<b>Uses:</b>	IHC - Paraffin (5 µg/ml), Western blot (1 - 2 µg/ml), ELISA (Optimal dilution to be determined by the researcher)
<b>Size:</b>	50 µg
<b>Concentration:</b>	1 mg/ml

**Immunohistochemistry Image:**



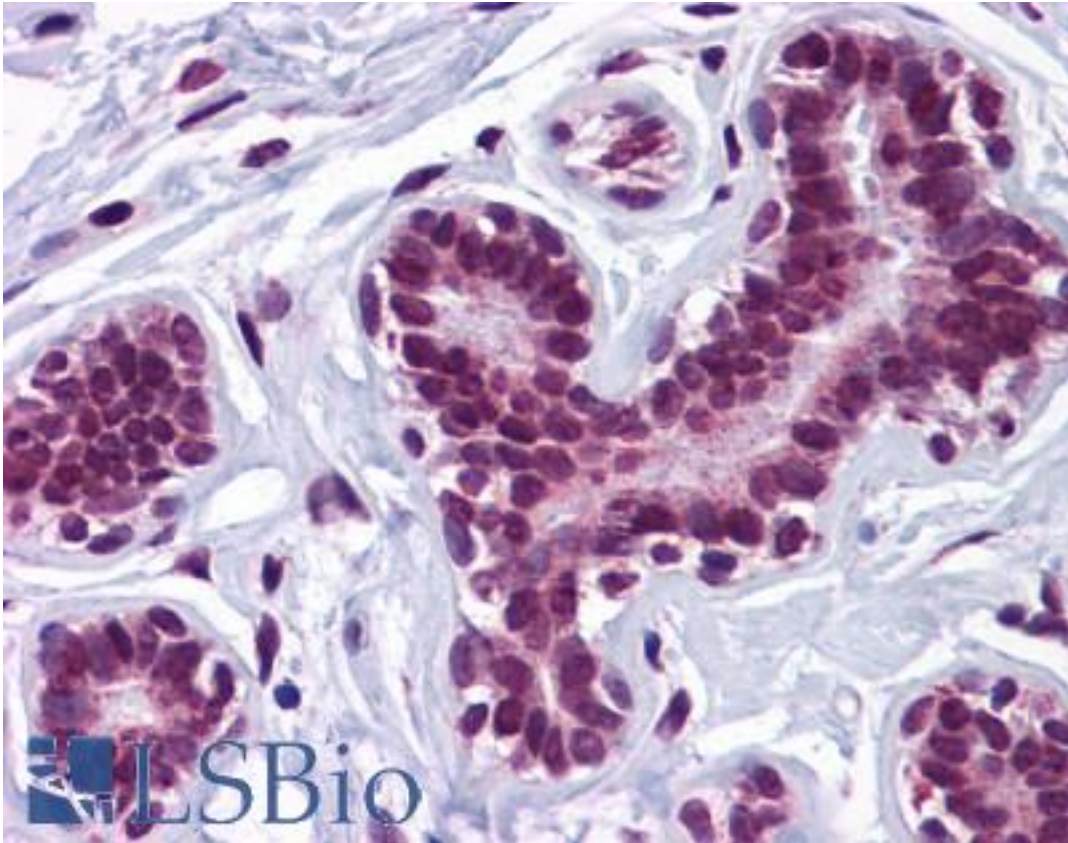
Anti-KPNA4 antibody IHC of human colon. Immunohistochemistry of formalin-fixed, paraffin-embedded tissue after heat-induced antigen retrieval. Antibody LS-B5342 concentration 5 ug/ml.

**Immunohistochemistry Image:**



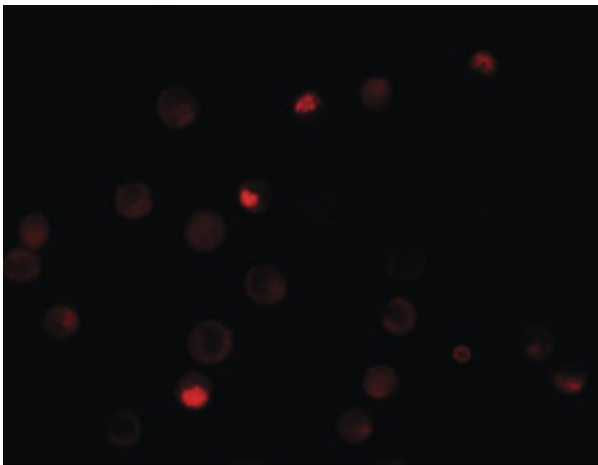
Anti-KPNA4 antibody IHC of human placenta. Immunohistochemistry of formalin-fixed, paraffin-embedded tissue after heat-induced antigen retrieval. Antibody LS-B5342 concentration 5 ug/ml.

**Immunohistochemistry Image:**

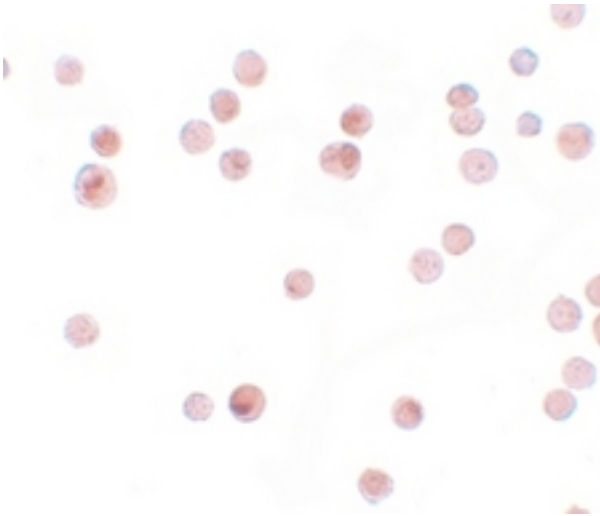


Anti-KPNA4 antibody IHC of human breast. Immunohistochemistry of formalin-fixed, paraffin-embedded tissue after heat-induced antigen retrieval. Antibody LS-B5342 concentration 5 ug/ml.

**Immunofluorescence Image:**

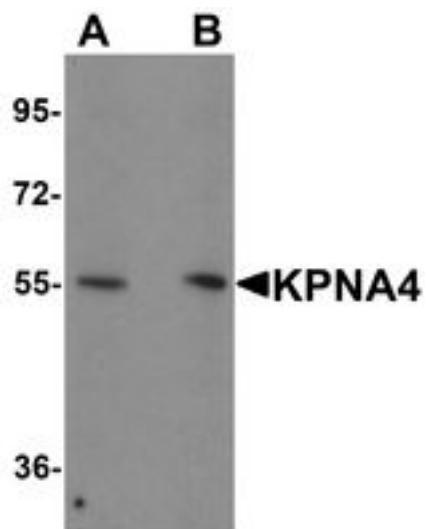


**Immunocytochemistry Image:**



Immunocytochemistry of KPNA4 in HeLa cells with KPNA4 antibody at 2.5 ug/ml.

**Western Blot Image:**



Western blot analysis of KPNA1 in HeLa cell lysate with KPNA1 antibody at 1ug/ml.

**Requested From:**

Japan

Laboratory Reagent For In Vitro Research Use Only

Not for resale without prior written consent from LifeSpan BioSciences, Inc.

Created on 9/24/2014

© 2014 LifeSpan BioSciences