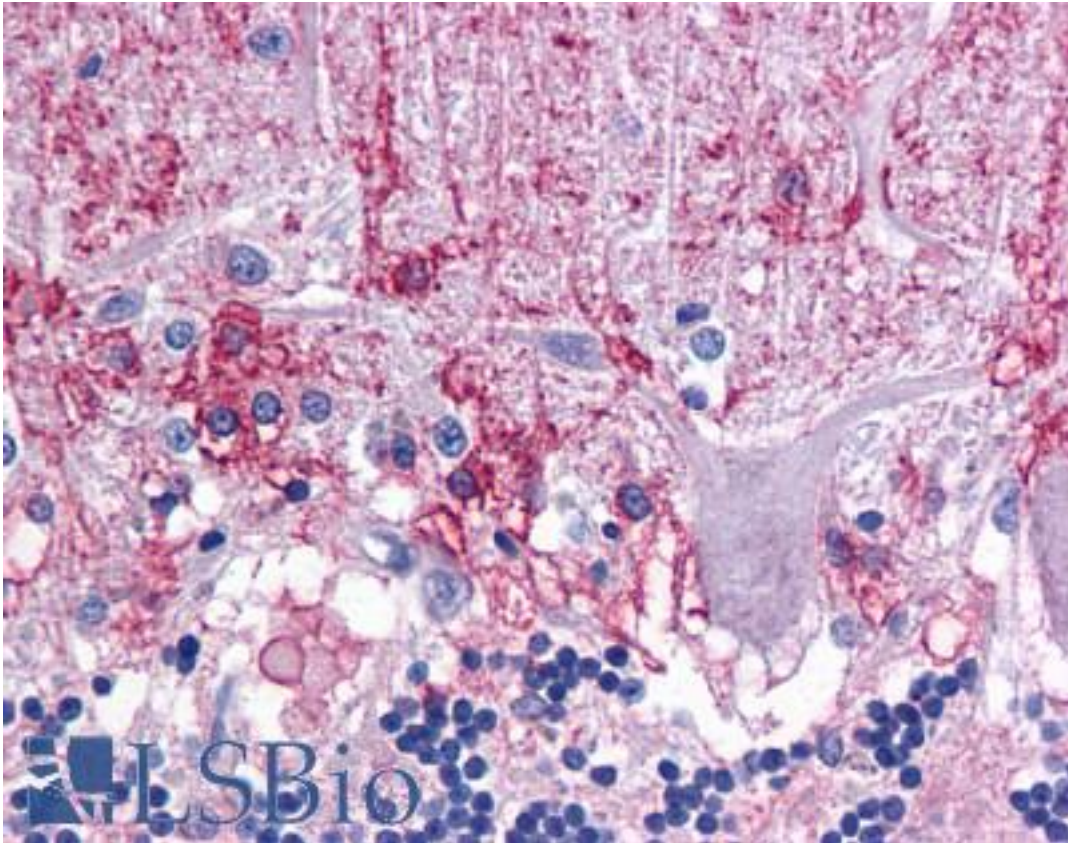


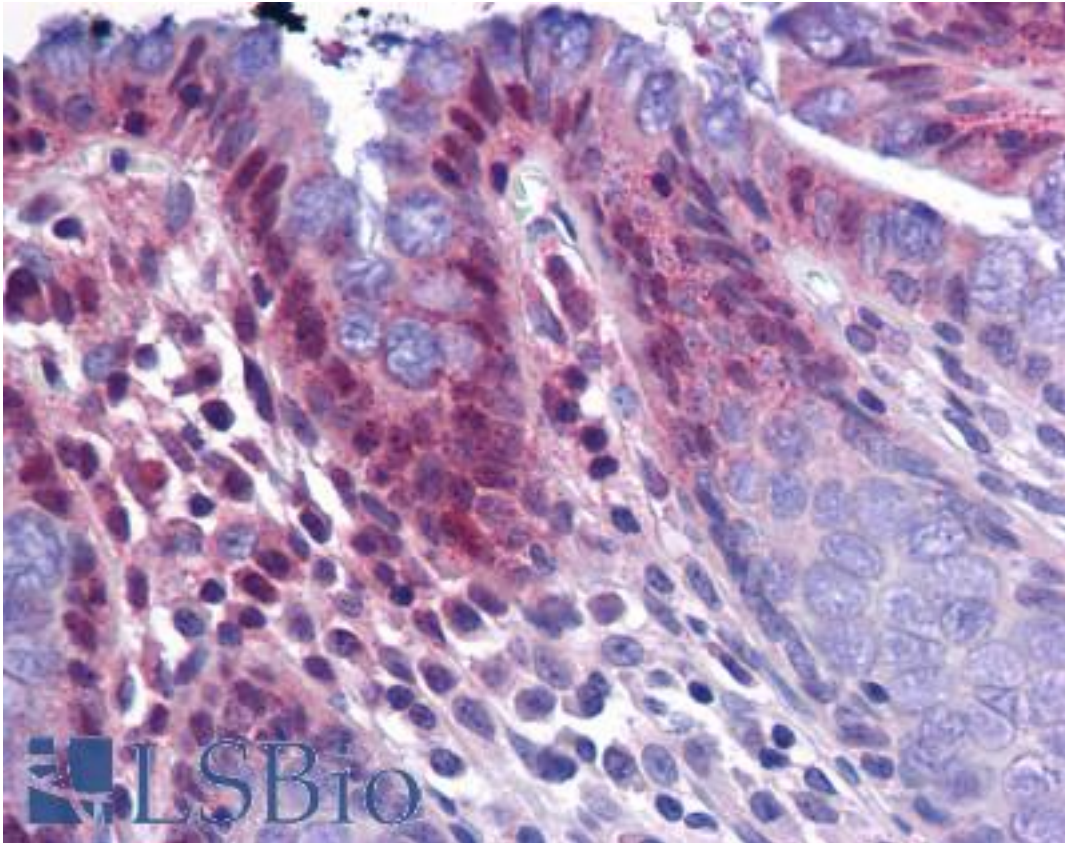
| KPNA3 / Importin Alpha 4 Rabbit anti-Human Polyclonal (C-Terminus) Antibody - LS-B5341 - LSBio | |
|--|---|
| CatalogID: | LS-B5341 |
| Validation: | This antibody replaces catalog number LS-C115910. It has been validated for use in the following assays: IHC-P. |
| Target: | karyopherin alpha 3 (importin alpha 4) (KPNA3) |
| Synonyms: | KPNA3 Antibody, Importin alpha-3 Antibody, Importin alpha Q2 Antibody, Karyopherin subunit alpha-3 Antibody, Importin-alpha-Q2 Antibody, IPOA4 Antibody, Qip2 Antibody, SRP1 Antibody, HSRP1 Antibody, Importin alpha 4 Antibody, Importin subunit alpha-3 Antibody, SRP1-gamma Antibody, SRP1gamma Antibody, SRP4 Antibody |
| Host | KPNA3 antibody was produced in Rabbit |
| Clonality: | Polyclonal |
| Immunogen Species: | KPNA3 / Importin Alpha 4 antibody was raised against Human |
| Antigen Type: | Synthetic peptide |
| Immunogen: | KPNA3 / Importin Alpha 4 antibody was raised against a 14 amino acid peptide near the carboxy end of human KPNA3. |
| Specificity: | Human KPNA3 |
| Epitope: | C-Terminus |
| Reactivity: | Human, Mouse, Rat |
| Purification: | Immunoaffinity purified |
| Presentation: | PBS, 0.02% sodium azide |
| Recommended Storage: | Short term 4°C, long term aliquot and store at -20°C, avoid freeze thaw cycles. Store undiluted. |
| Usage Summary: | KPNA3 antibody can be used for detection of KPNA3 by Western blot at 1-2 ug/ml. |
| Uses: | IHC - Paraffin (5 µg/ml), Western blot (1 - 2 µg/ml), ELISA (Optimal dilution to be determined by the researcher) |
| Size: | 50 µg |
| Concentration: | 1 mg/ml |

Immunohistochemistry Image:



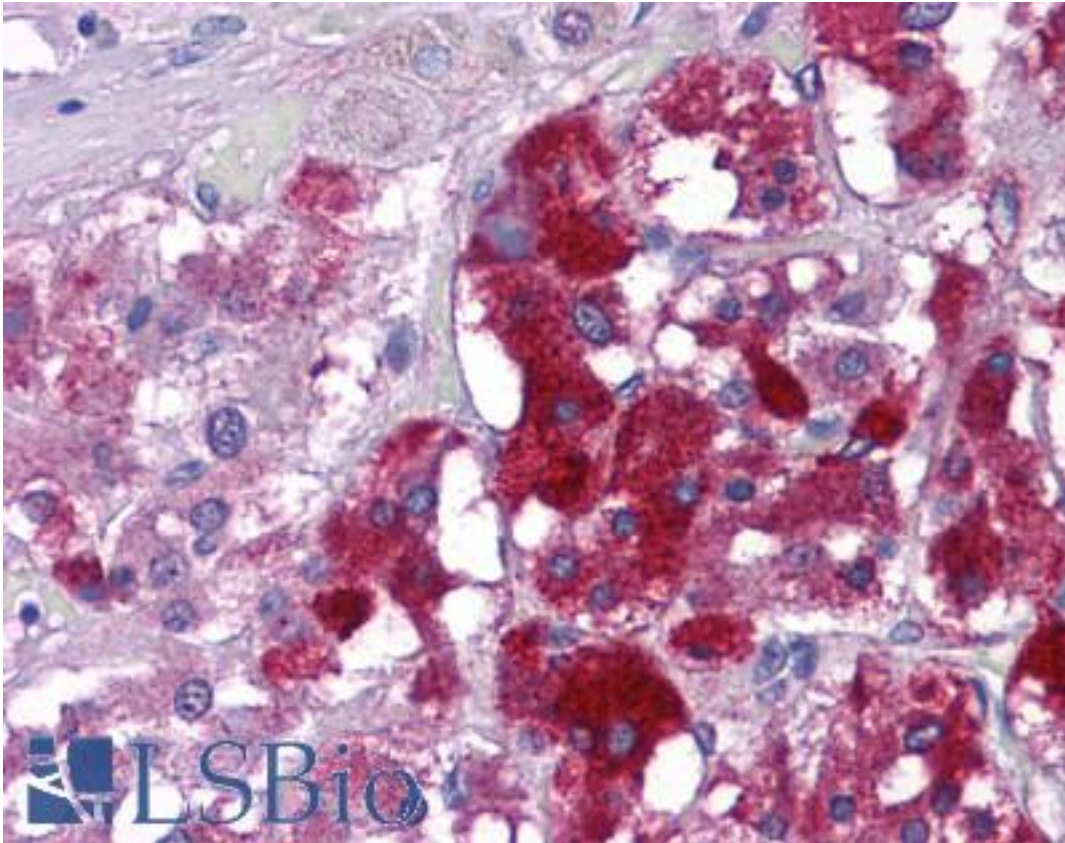
Anti-KPNA3 antibody IHC of human brain, cerebellum. Immunohistochemistry of formalin-fixed, paraffin-embedded tissue after heat-induced antigen retrieval. Antibody LS-B5341 concentration 5 ug/ml.

Immunohistochemistry Image:



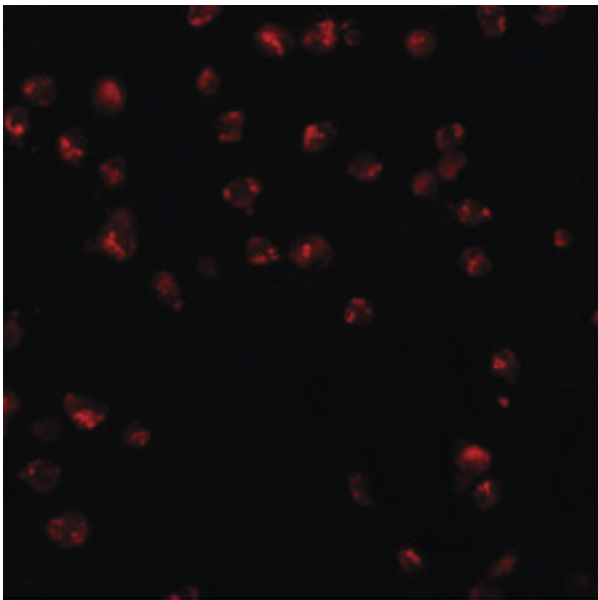
Anti-KPNA3 antibody IHC of human colon. Immunohistochemistry of formalin-fixed, paraffin-embedded tissue after heat-induced antigen retrieval. Antibody LS-B5341 concentration 5 ug/ml.

Immunohistochemistry Image:

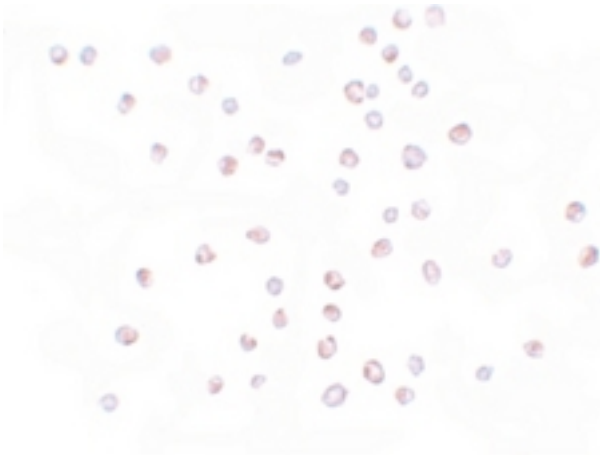


Anti-KPNA3 antibody IHC of human adrenal. Immunohistochemistry of formalin-fixed, paraffin-embedded tissue after heat-induced antigen retrieval. Antibody LS-B5341 concentration 5 ug/ml.

Immunofluorescence Image:

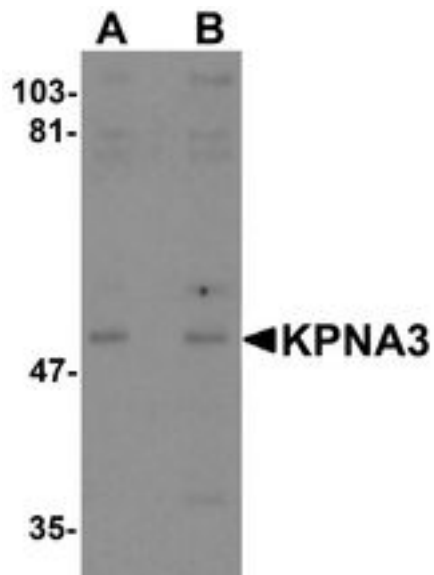


Immunocytochemistry Image:



Immunocytochemistry of KPNA3 in HeLa cells with KPNA3 antibody at 10 ug/ml.

Western Blot Image:



Western blot analysis of KPNA3 in EL4 cell lysate with KPNA3 antibody at (A) 1 and (B) 2 ug/ml.

Requested From:

Japan

Laboratory Reagent For In Vitro Research Use Only

Not for resale without prior written consent from LifeSpan BioSciences, Inc.

Created on 9/24/2014

© 2014 LifeSpan BioSciences