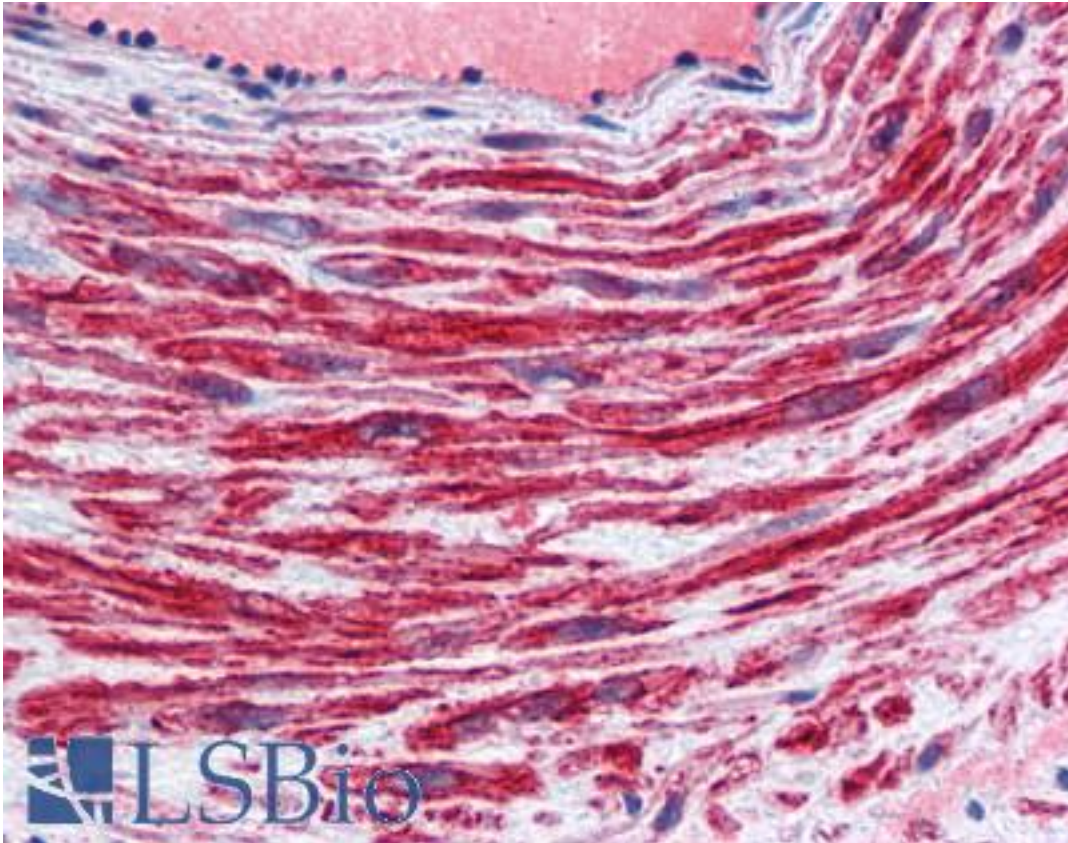


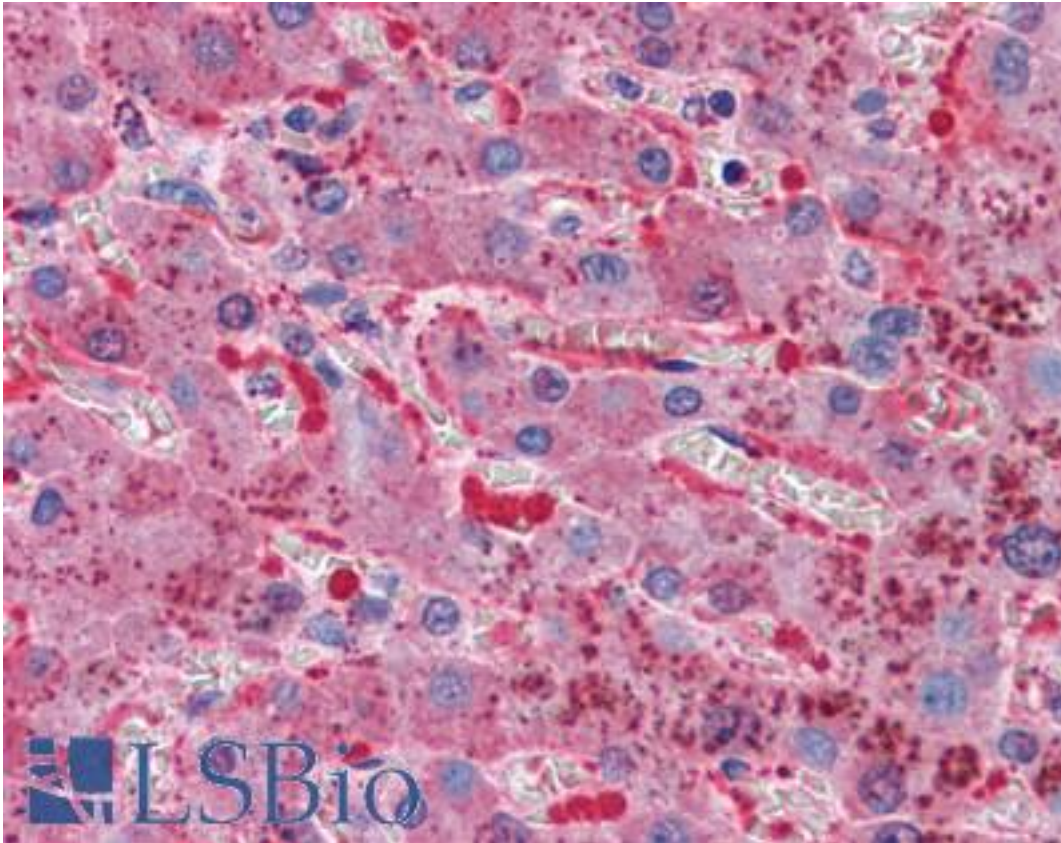
TFPI /LACI Mouse anti-Human Monoclonal Antibody - LS-B5333 - LSBio	
CatalogID:	LS-B5333
Validation:	This antibody replaces catalog number LS-C39705. It has been validated for use in the following assays: IHC-P.
Target:	tissue factor pathway inhibitor (lipoprotein-associated coagulation inhibitor) (TFPI)
Synonyms:	TFPI Antibody, Anti-convertin Antibody, Extrinsic pathway inhibitor Antibody, EPI Antibody, LACI Antibody, TFI Antibody, TFPI1 Antibody
Host	TFPI antibody was produced in Mouse
Clonality:	Monoclonal
Isotype:	IgG
Immunogen Species:	TFPI /LACI antibody was raised against Human
Immunogen:	TFPI /LACI antibody was raised against amino acids Asp-Ser-Glu-Glu-Asp-Glu-Glu-His-Thr-Ile-Ile-Thr-Asp-Thr-Glu -(Cys) corresponding to aa 29-44 of the prototype P10646.
Specificity:	Recognizes Human Tissue Factor Pathway Inhibitor.
Reactivity:	Human
Purification:	Purified
Presentation:	ddH2O, 50% glycerol.
Recommended Storage:	Short term 4°C, long term aliquot and store at -20°C, avoid freeze thaw cycles.
Usage Summary:	Suitable for use in ELISA and Western Blot.
Uses:	IHC - Paraffin (10 µg/ml), Western blot, ELISA (Optimal dilution to be determined by the researcher)
Size:	50 µg
Concentration:	1 mg/ml

Immunohistochemistry Image:



Anti-TFPI antibody IHC of human vessel. Immunohistochemistry of formalin-fixed, paraffin-embedded tissue after heat-induced antigen retrieval. Antibody LS-B5333 concentration 10 ug/ml.

Immunohistochemistry Image:



Anti-TFPI antibody IHC of human liver. Immunohistochemistry of formalin-fixed, paraffin-embedded tissue after heat-induced antigen retrieval. Antibody LS-B5333 concentration 10 ug/ml.

Requested From:

Japan

Laboratory Reagent For In Vitro Research Use Only

Not for resale without prior written consent from LifeSpan BioSciences, Inc.

Created on 9/24/2014

© 2014 LifeSpan BioSciences