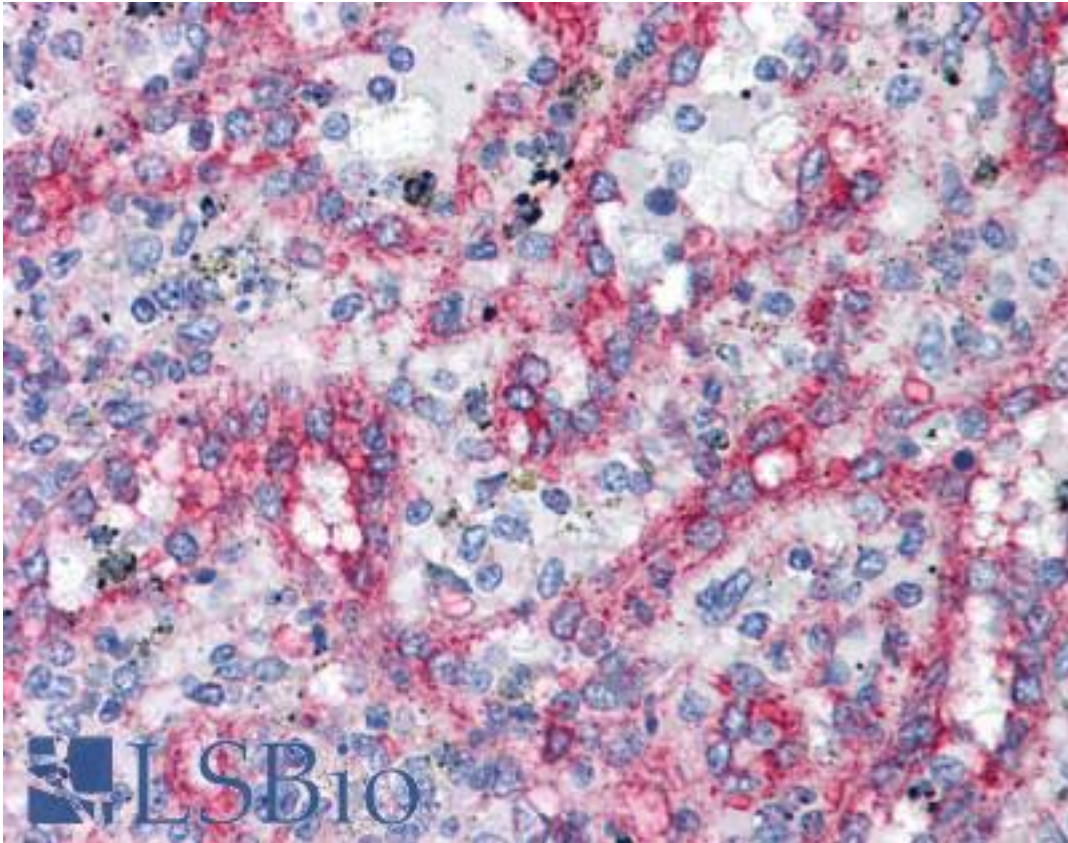


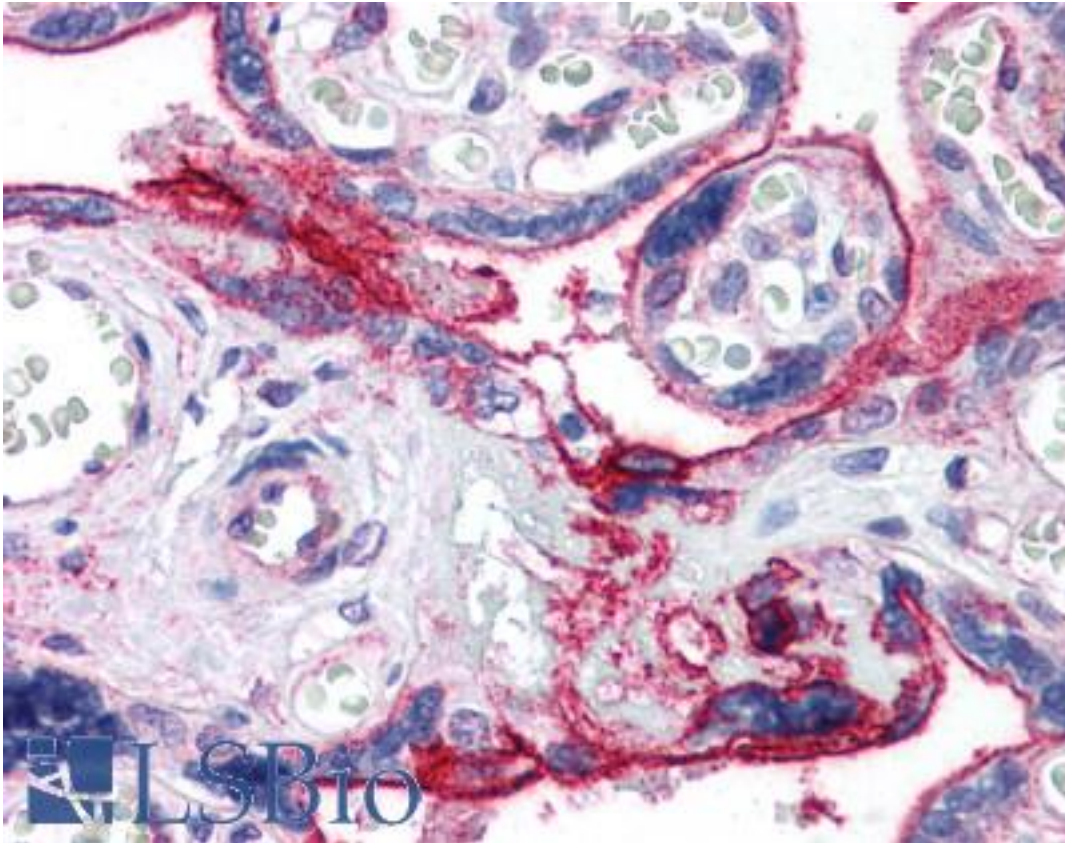
ITGB1 / Integrin Beta 1 / CD29 Mouse anti-Human Monoclonal (FITC) Antibody - LS-B5324 - LSBio	
CatalogID:	LS-B5324
Validation:	This antibody replaces catalog number LS-C44114. It has been validated for use in the following assays: IHC-P.
Target:	integrin, beta 1 (fibronectin receptor, beta polypeptide, antigen CD29 includes MDF2, MSK12) (ITGB1)
Synonyms:	ITGB1 Antibody, CD29 Antibody, CD29 antigen Antibody, Integrin beta-1 Antibody, MDF2 Antibody, MSK12 Antibody, Integrin VLA-4 beta subunit Antibody, VLA-BETA Antibody, VLAB Antibody, Beta 1 integrin Antibody, FNRB Antibody, GPIIA Antibody, Integrin Beta 1 Antibody, VLA-4 subunit beta Antibody
Family / Subfamily:	Integrin / not assigned-Integrin
Host	ITGB1 antibody was produced in Mouse
Clonality:	Monoclonal
Isotype:	IgG1
Conjugations:	Fluorescein (FITC)
Immunogen Species:	ITGB1 / Integrin Beta 1 / CD29 antibody was raised against Human
Antigen Type:	Cells
Immunogen:	ITGB1 / Integrin Beta 1 / CD29 antibody was raised against ocular melanoma cell line V+B2.
Specificity:	Recognizes the beta 1 subunit of human integrin (CD29), which is a transmembrane glycoprotein expressed by most leukocytes
Reactivity:	Human
Purification:	Protein G purified
Presentation:	PBS, pH 7.4, 0.09% sodium azide, 1% BSA.
Recommended Storage:	+4°C or -20°C, Avoid repeated freezing and thawing.
Usage Summary:	Flow Cytometry: Use 10 ul of the suggested working dilution to label 10 ⁶ cells in 100 ul. Method sheets are available on request.
Uses:	IHC - Paraffin (1:50), Flow Cytometry (1:1) (Optimal dilution to be determined by the researcher)
Size:	50 µg
Concentration:	0.1 mg/ml

Immunohistochemistry Image:



Anti-Integrin Beta 1 antibody IHC of human spleen. Immunohistochemistry of formalin-fixed, paraffin-embedded tissue after heat-induced antigen retrieval. Antibody LS-B5324 dilution 1:50.

Immunohistochemistry Image:



Anti-Integrin Beta 1 antibody IHC of human placenta. Immunohistochemistry of formalin-fixed, paraffin-embedded tissue after heat-induced antigen retrieval. Antibody LS-B5324 dilution 1:50.

Requested From:

Japan

Laboratory Reagent For In Vitro Research Use Only

Not for resale without prior written consent from LifeSpan BioSciences, Inc.

Created on 9/24/2014

© 2014 LifeSpan BioSciences