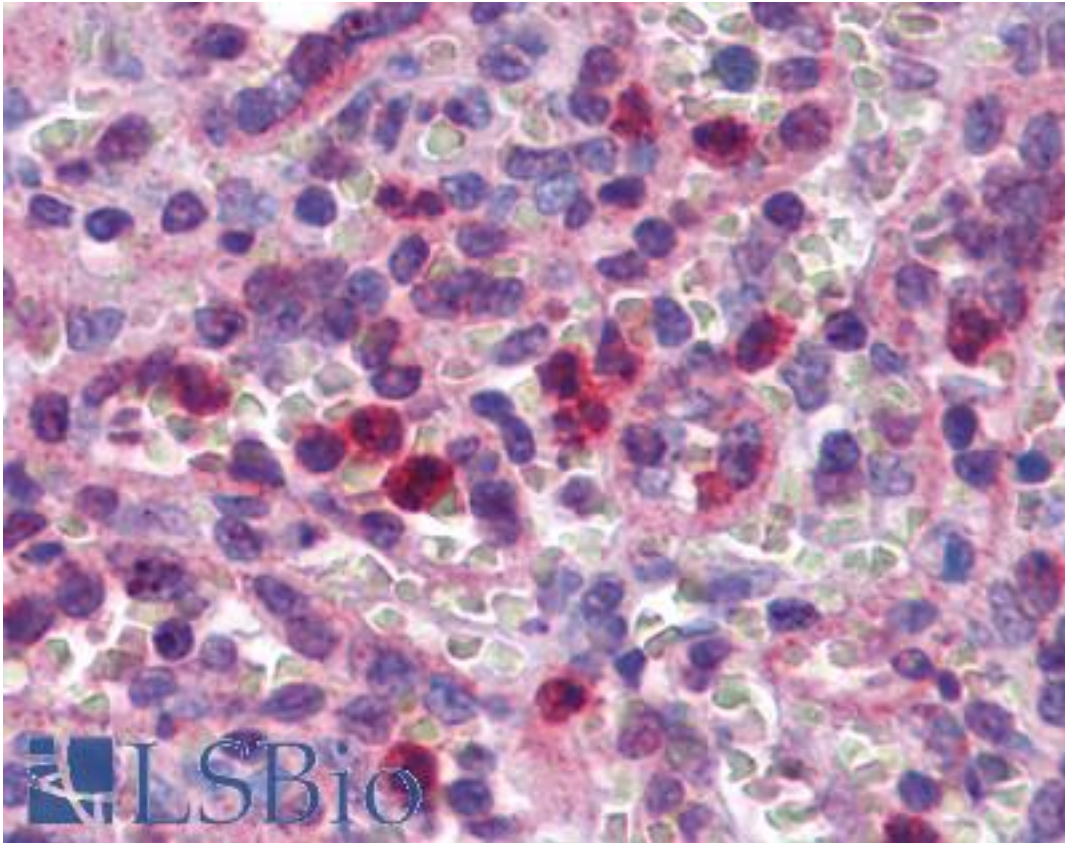


**SCRN2 / Ses2 Rabbit anti-Human Polyclonal (C-Terminus) Antibody - LS-B5308 - LSBio**

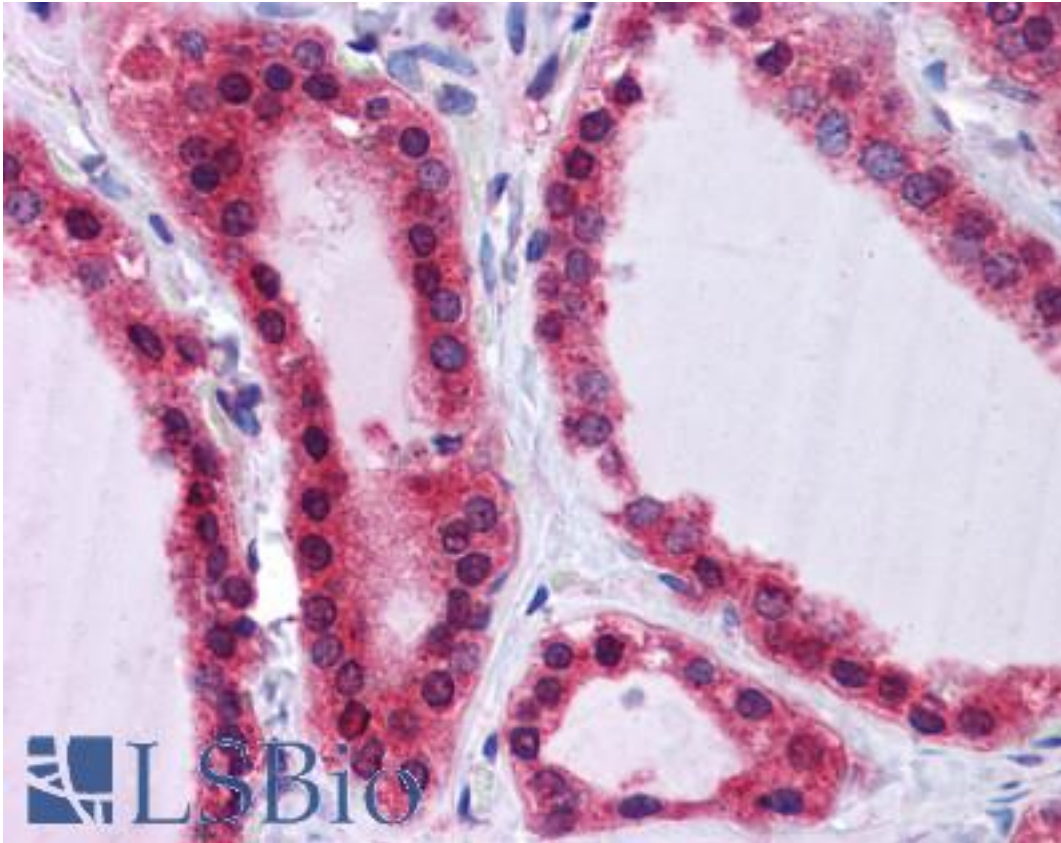
<b>CatalogID:</b>	LS-B5308
<b>Validation:</b>	This antibody replaces catalog number LS-C115873. It has been validated for use in the following assays: IHC-P.
<b>Target:</b>	secernin 2 (SCRN2)
<b>Synonyms:</b>	SCRN2 Antibody, Secernin 2 Antibody, SES2 Antibody, Secernin-2 Antibody
<b>Host</b>	SCRN2 antibody was produced in Rabbit
<b>Clonality:</b>	Polyclonal
<b>Immunogen Species:</b>	SCRN2 / Ses2 antibody was raised against Human
<b>Antigen Type:</b>	Synthetic peptide
<b>Immunogen:</b>	SCRN2 / Ses2 antibody was raised against an 18 amino acid peptide near the carboxy terminus of human SCRN2.
<b>Specificity:</b>	Human SCRN2
<b>Epitope:</b>	C-Terminus
<b>Reactivity:</b>	Human, Mouse, Rat
<b>Purification:</b>	Immunoaffinity purified
<b>Presentation:</b>	PBS, 0.02% sodium azide
<b>Recommended Storage:</b>	Short term 4°C, long term aliquot and store at -20°C, avoid freeze thaw cycles. Store undiluted.
<b>Usage Summary:</b>	SCRN2 antibody can be used for detection of SCRN2 by Western blot at 0.5-1 ug/ml.
<b>Uses:</b>	IHC - Paraffin (5 µg/ml), ICC, Western blot (0.5 - 1 µg/ml), ELISA (Optimal dilution to be determined by the researcher)
<b>Size:</b>	50 µg
<b>Concentration:</b>	1 mg/ml

**Immunohistochemistry Image:**



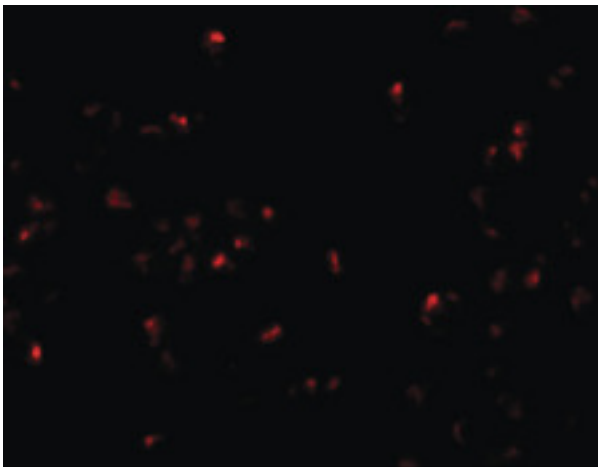
Anti-SCRN2 antibody IHC of human spleen. Immunohistochemistry of formalin-fixed, paraffin-embedded tissue after heat-induced antigen retrieval. Antibody LS-B5308 concentration 5 ug/ml.

**Immunohistochemistry Image:**



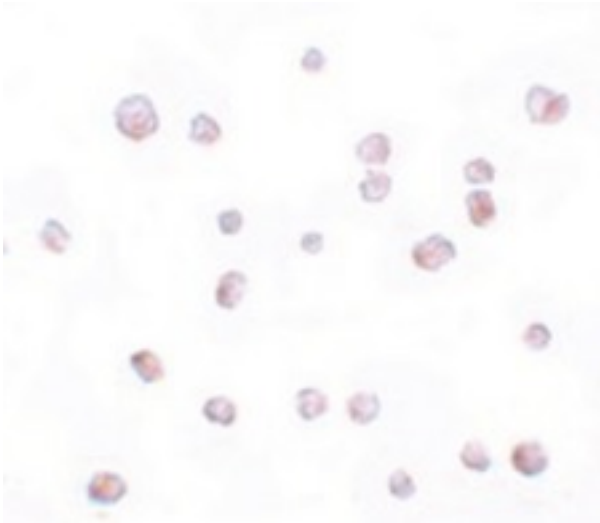
Anti-SCRN2 antibody IHC of human thyroid. Immunohistochemistry of formalin-fixed, paraffin-embedded tissue after heat-induced antigen retrieval. Antibody LS-B5308 concentration 5 ug/ml.

**Immunofluorescence Image:**



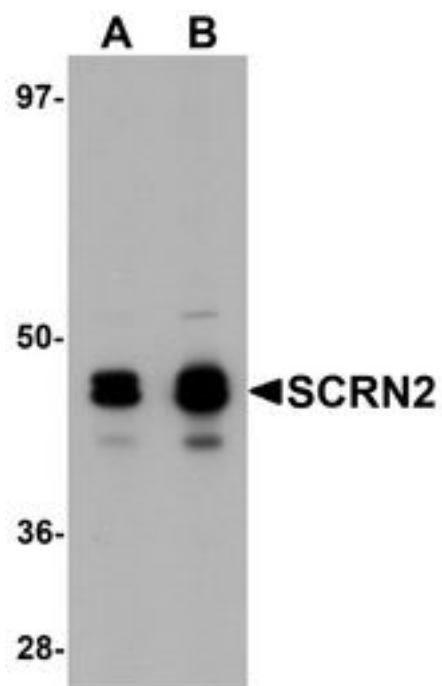
Immunofluorescence of SCRN2 in 293 cells with SCRN2 antibody at 20 ug/ml.

**Immunocytochemistry Image:**



Immunocytochemistry of SCRIN2 in 293 cells with SCRIN2 antibody at 20 ug/ml.

**Western Blot Image:**



Western blot analysis of SCRIN2 in 293 cell tissue lysate with SCRIN2 antibody at (A) 0.5 and (B) 1 ug/ml.

**Requested From:**

Japan

Laboratory Reagent For In Vitro Research Use Only

Not for resale without prior written consent from LifeSpan BioSciences, Inc.

Created on 9/24/2014

© 2014 LifeSpan BioSciences