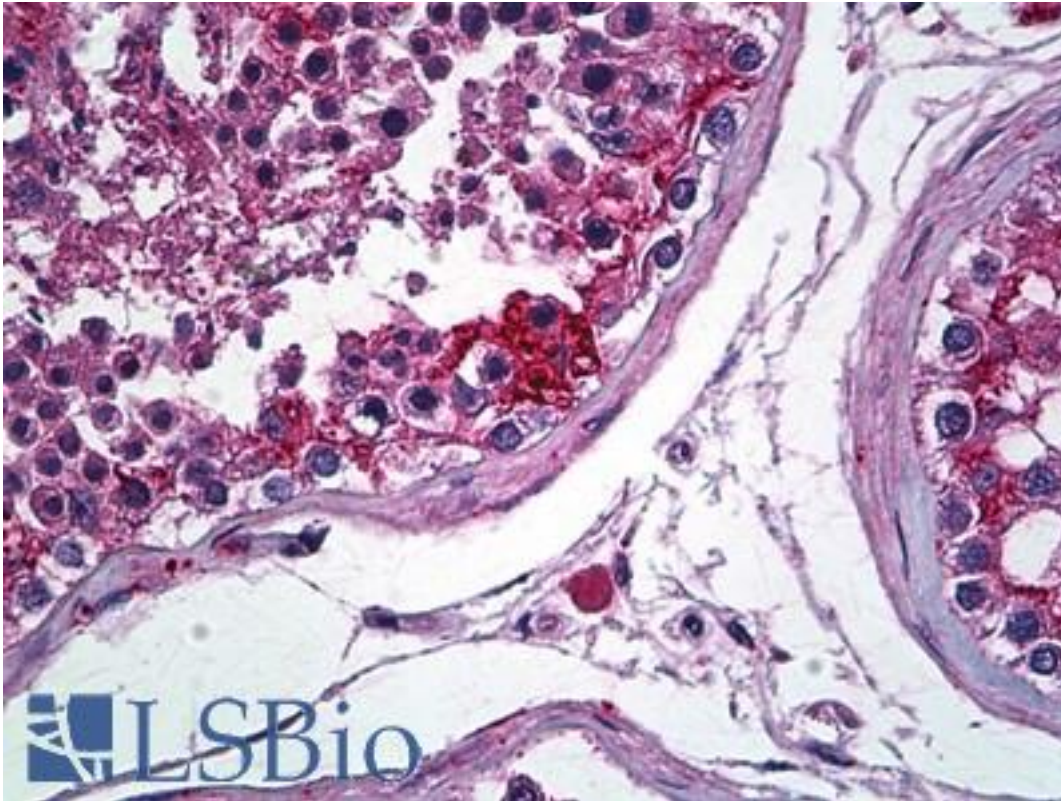


CLDN11 / Claudin 11 Rabbit anti-Human Polyclonal (C-Terminus) Antibody - LS-B5302 - LSBio	
CatalogID:	LS-B5302
Validation:	This antibody replaces catalog number LS-C50766. It has been validated for use in the following assays: IHC-P.
Target:	claudin 11 (CLDN11)
Synonyms:	CLDN11 Antibody, Claudin-11 Antibody, OSP Antibody, OTM Antibody, Claudin 11 Antibody
Family / Subfamily:	Claudin / not assigned-Claudin
Host	CLDN11 antibody was produced in Rabbit
Clonality:	Polyclonal
Isotype:	IgG
Immunogen Species:	CLDN11 / Claudin 11 antibody was raised against Human
Antigen Type:	Synthetic peptide
Immunogen:	CLDN11 / Claudin 11 antibody was raised against a synthetic peptide from C-terminal of human claudin 11 protein.
Epitope:	C-Terminus
Reactivity:	Human, Mouse
Purification:	Immunoaffinity purified
Presentation:	10 mM PBS, pH 7.4, BSA, sodium azide.
Recommended Storage:	Store at 2°C to 8°C degrees. Do not freeze.
Uses:	IHC - Paraffin (1:50) (Optimal dilution to be determined by the researcher)
Size:	250 µl

Immunohistochemistry Image:



Anti-CLDN11 / Claudin 11 antibody IHC of human testis, sertoli cells. Immunohistochemistry of formalin-fixed, paraffin-embedded tissue after heat-induced antigen retrieval. Antibody LS-B5302 dilution 1:50.

Requested From:

Japan

Laboratory Reagent For In Vitro Research Use Only

Not for resale without prior written consent from LifeSpan BioSciences, Inc.

Created on 9/24/2014

© 2014 LifeSpan BioSciences