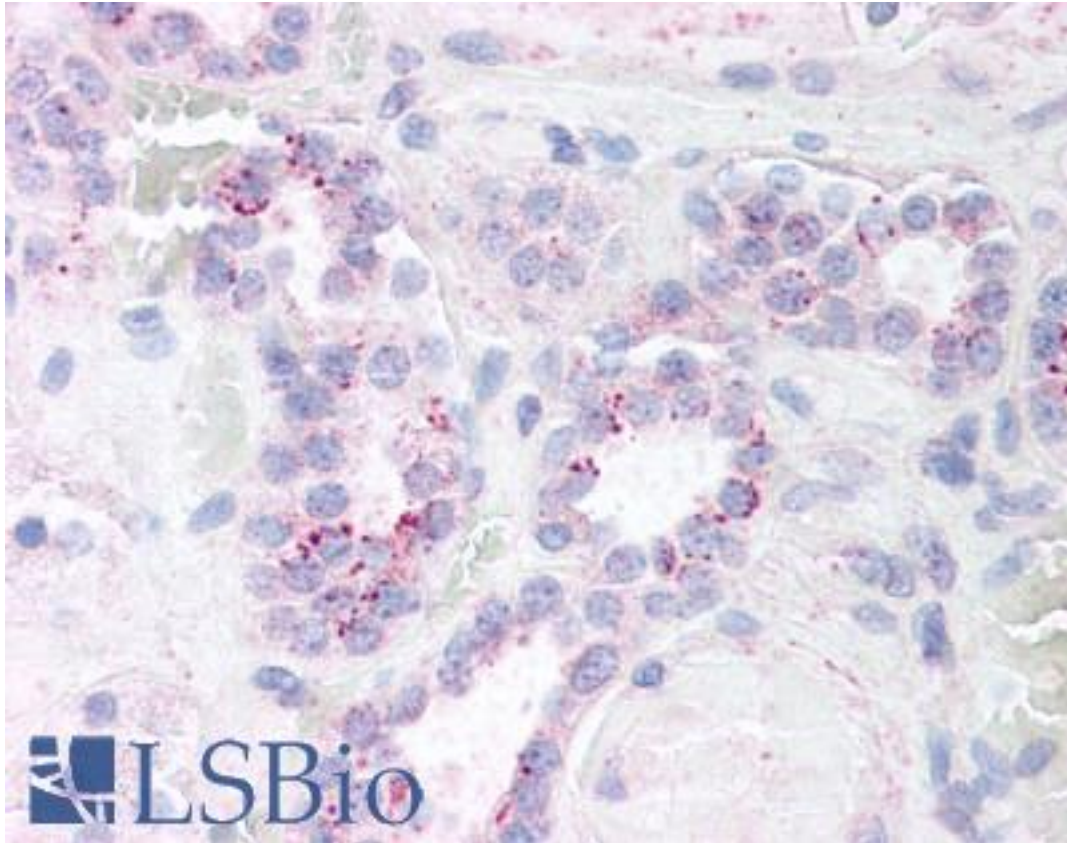


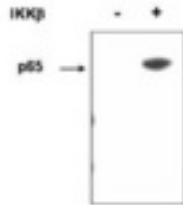
RELA / NFkB p65 Rabbit anti-Human Polyclonal Antibody - LS-B53 - LSBio	
<b>CatalogID:</b>	LS-B53
<b>Validation:</b>	This antibody replaces catalog number LS-C18907. It has been validated for use in the following assays: IF.
<b>Target:</b>	v-rel avian reticuloendotheliosis viral oncogene homolog A (RELA)
<b>Synonyms:</b>	RELA Antibody, NF-kappa-B p65delta3 Antibody, NFkB3 Antibody, p65 Antibody, Transcription factor p65 Antibody
<b>Host</b>	RELA antibody was produced in Rabbit
<b>Clonality:</b>	Polyclonal
<b>Immunogen Species:</b>	RELA / NFkB p65 antibody was raised against Human
<b>Antigen Type:</b>	Synthetic peptide
<b>Immunogen:</b>	RELA / NFkB p65 antibody was raised against synthetic peptide from human RELA.
<b>Specificity:</b>	Residues surrounding S536 of human p65 (RelA) protein.
<b>Reactivity:</b>	Human
<b>Purification:</b>	Immunoaffinity purified
<b>Presentation:</b>	0.02 M potassium phosphate, 0.15 M sodium chloride, pH 7.2, 0.01% sodium azide.
<b>Recommended Storage:</b>	+4°C or -20°C, Avoid repeated freezing and thawing.
<b>Usage Summary:</b>	Immunohistochemistry: LS-B53 was validated for use in immunohistochemistry on a panel of 21 formalin-fixed, paraffin-embedded (FFPE) human tissues after heat induced antigen retrieval in pH 6.0 citrate buffer. After incubation with the primary antibody, slides were incubated with biotinylated secondary antibody, followed by alkaline phosphatase-streptavidin and chromogen. The stained slides were evaluated by a pathologist to confirm staining specificity. The optimal working concentration for LS-B53 was determined to be 5 µg/ml.
<b>Uses:</b>	IHC - Paraffin (5 µg/ml), Western blot (1:200 - 1:2000), ELISA (1:1000 - 1:6000) (Optimal dilution to be determined by the researcher)
<b>Size:</b>	50 µg
<b>Concentration:</b>	1 mg/ml

**Immunohistochemistry Image:**



Anti-RELA antibody IHC of human kidney. Immunohistochemistry of formalin-fixed, paraffin-embedded tissue after heat-induced antigen retrieval. Antibody LS-B53 concentration 5 ug/ml.

**Western Blot Image:**



Anti-p65 (RelA) pS536 Antibody - Western Blot. Western blot of affinity purified anti-p65 (RelA) pS536 antibody shows detection of p65 phosphorylated at S536. The control blot (left lane) contains 100 ng of purified p65-GST fusion protein. The band is seen (right lane) when this protein is phosphorylated at S536 by IKKbeta. Personal Communication. J. Brady, NCI, Bethesda, MD.

**Requested From:**

Japan

Laboratory Reagent For In Vitro Research Use Only

Not for resale without prior written consent from LifeSpan BioSciences, Inc.

Created on 9/24/2014

© 2014 LifeSpan BioSciences