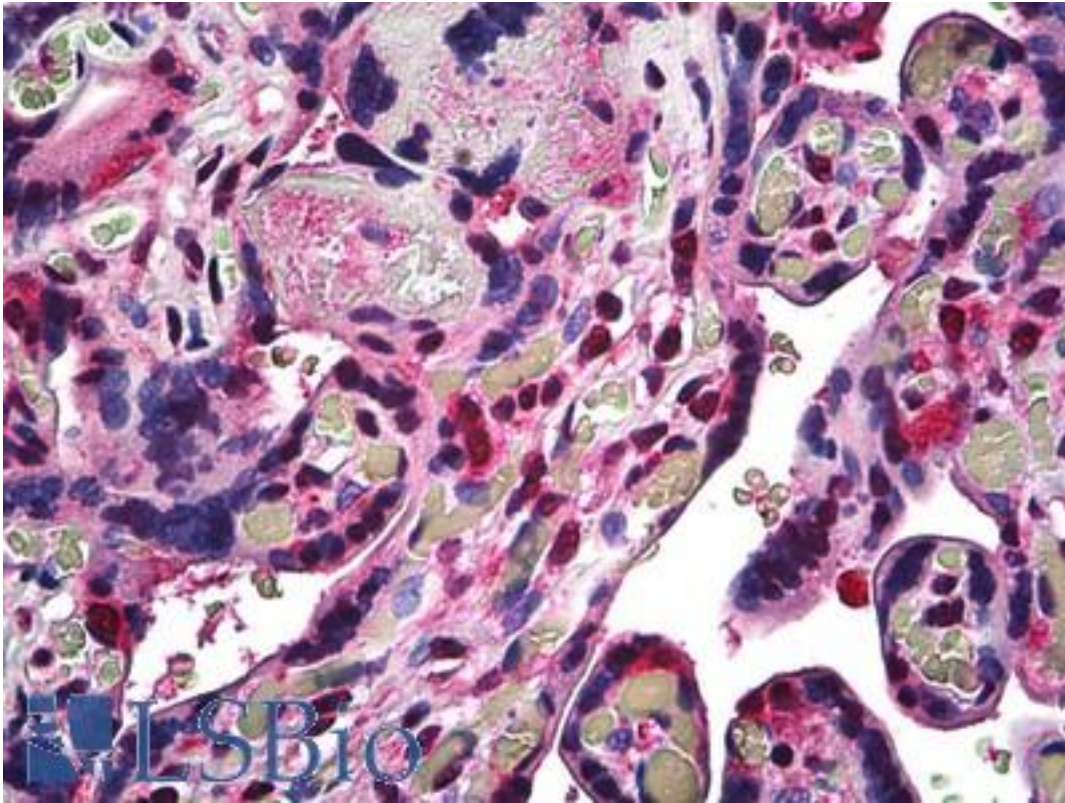


ROC1 / RBX1 Rabbit anti-Human Polyclonal (C-Terminus) Antibody - LS-B5298 - LSBio

CatalogID:	LS-B5298
Validation:	This antibody replaces catalog number LS-C50684. It has been validated for use in the following assays: IHC-P.
Target:	ring-box 1, E3 ubiquitin protein ligase (RBX1)
Synonyms:	RBX1 Antibody, Regulator of cullins 1 Antibody, RING box protein 1 Antibody, ROC1 Antibody, TESTICAN Antibody, Ring-box 1 Antibody, RNF75 Antibody, BA554C12.1 Antibody, Protein ZYP Antibody, RING finger protein 75 Antibody, RING-box protein 1 Antibody, ZYP protein Antibody
Host	RBX1 antibody was produced in Rabbit
Clonality:	Polyclonal
Isotype:	IgG
Immunogen Species:	ROC1 / RBX1 antibody was raised against Human
Antigen Type:	Synthetic peptide
Immunogen:	ROC1 / RBX1 antibody was raised against a synthetic peptide derived from the C-terminus of human ROC1.
Epitope:	C-Terminus
Reactivity:	Human, Mouse
Purification:	Immunoaffinity purified
Presentation:	10 mM PBS, pH 7.4, BSA, sodium azide.
Recommended Storage:	Store at 2°C to 8°C degrees. Do not freeze.
Uses:	IHC - Paraffin (1:50) (Optimal dilution to be determined by the researcher)
Size:	250 µl

Immunohistochemistry Image:



Anti-RBX1 antibody IHC of human placenta. Immunohistochemistry of formalin-fixed, paraffin-embedded tissue after heat-induced antigen retrieval. Antibody LS-B5298 dilution 1:50.

Requested From:

Japan

Laboratory Reagent For In Vitro Research Use Only

Not for resale without prior written consent from LifeSpan BioSciences, Inc.

Created on 9/24/2014

© 2014 LifeSpan BioSciences