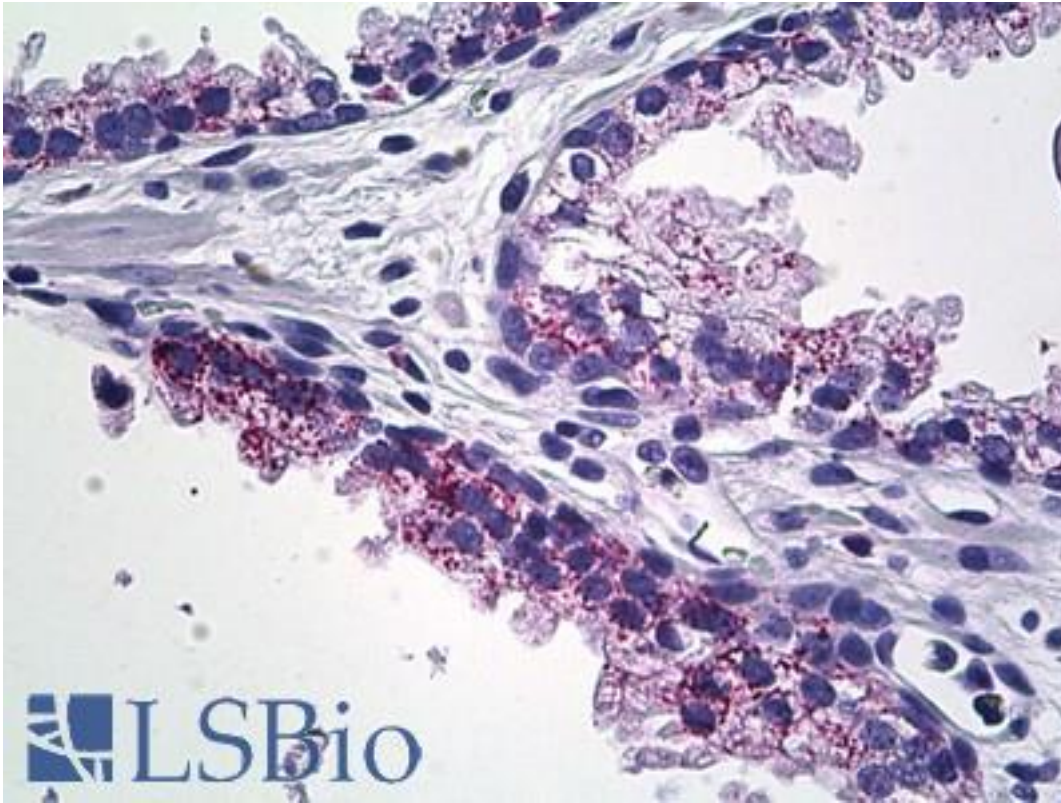


MMP23B / MMP-23B Rabbit anti-Human Polyclonal (C-Terminus) Antibody - LS-B5292 - LSBio	
CatalogID:	LS-B5292
Validation:	This antibody replaces catalog number LS-C50669. It has been validated for use in the following assays: IHC-P.
Target:	matrix metalloproteinase 23B (MMP23B)
Synonyms:	MMP23B Antibody, CA-MMP Antibody, Matrix metalloproteinase 23B Antibody, Matrix metalloproteinase 23B Antibody, Matrix metalloproteinase 22 Antibody, Matrix metalloproteinase-21 Antibody, Matrix metalloproteinase-22 Antibody, Matrix metalloproteinase-23 Antibody, MIFR-2 Antibody, MMP-21 Antibody, MMP23A Antibody, MIFR Antibody, MIFR-1 Antibody, Femalysin Antibody, Matrix metalloproteinase 23A Antibody, MMP 23 Antibody, MMP-22 Antibody, MMP-23 Antibody, MMP22 Antibody
Family / Subfamily:	Protease / Metalloproteinase Other
Host	MMP23B antibody was produced in Rabbit
Clonality:	Polyclonal
Isotype:	IgG
Immunogen Species:	MMP23B / MMP-23B antibody was raised against Human
Antigen Type:	Synthetic peptide
Immunogen:	MMP23B / MMP-23B antibody was raised against a synthetic peptide derived from C-terminus of human MMP-23 protein.
Epitope:	C-Terminus
Reactivity:	Human
Purification:	Immunoaffinity purified
Presentation:	10 mM PBS, pH 7.4, BSA, sodium azide.
Recommended Storage:	Store at 2°C to 8°C degrees. Do not freeze.
Uses:	IHC - Paraffin (1:50), Western blot (Optimal dilution to be determined by the researcher)
Size:	250 µl

Immunohistochemistry Image:



Anti-MMP23B antibody IHC of human prostate. Immunohistochemistry of formalin-fixed, paraffin-embedded tissue after heat-induced antigen retrieval. Antibody LS-B5292 dilution 1:50.

Requested From:

Japan

Laboratory Reagent For In Vitro Research Use Only

Not for resale without prior written consent from LifeSpan BioSciences, Inc.

Created on 9/24/2014

© 2014 LifeSpan BioSciences