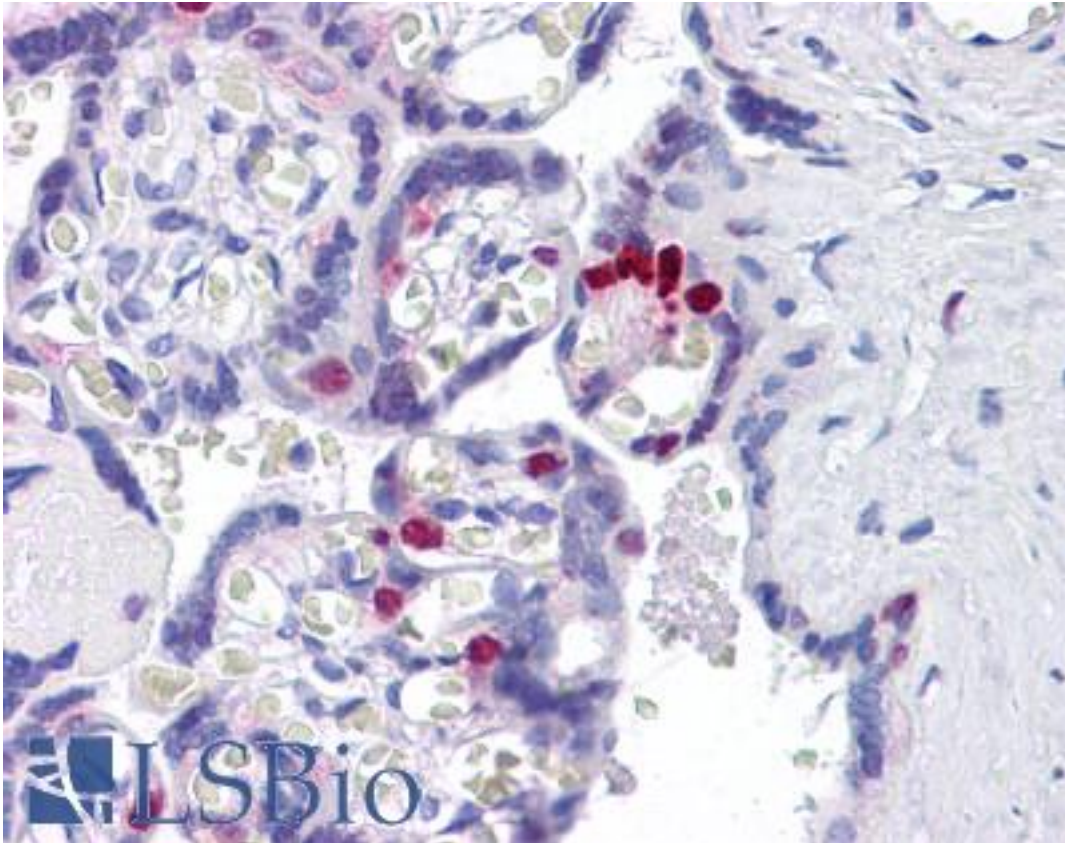


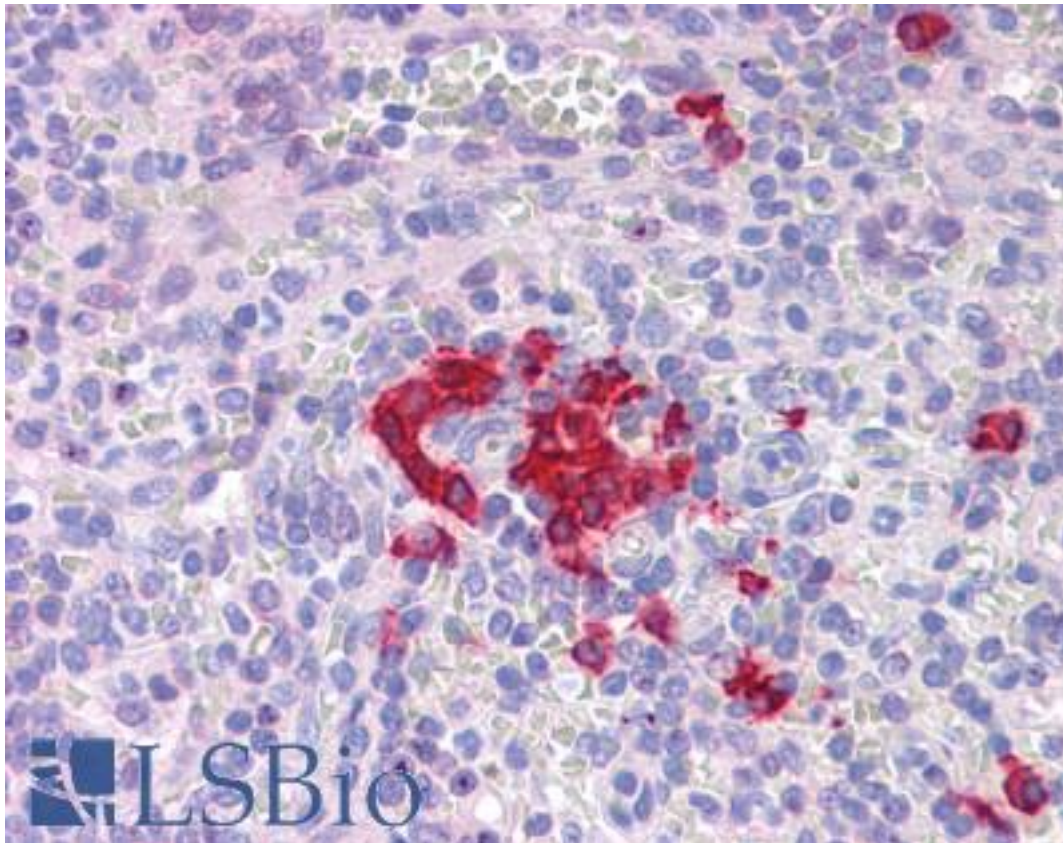
FOXO4 / AFX1 Rabbit anti-Human Polyclonal (N-Terminus) Antibody - LS-B5285 - LSBio	
<b>CatalogID:</b>	LS-B5285
<b>Validation:</b>	This antibody replaces catalog number LS-C115857. It has been validated for use in the following assays: IHC-P.
<b>Target:</b>	forkhead box O4 (FOXO4)
<b>Synonyms:</b>	FOXO4 Antibody, AFX Antibody, AFX1 Antibody, Forkhead box O4 Antibody, Forkhead box protein O4 Antibody, MLLT7 Antibody
<b>Family / Subfamily:</b>	Transcription factor / not assigned-Transcription factor
<b>Host</b>	FOXO4 antibody was produced in Rabbit
<b>Clonality:</b>	Polyclonal
<b>Immunogen Species:</b>	FOXO4 / AFX1 antibody was raised against Human
<b>Antigen Type:</b>	Synthetic peptide
<b>Immunogen:</b>	FOXO4 / AFX1 antibody was raised against a 16 amino acid peptide near the amino terminus of human FOXO4.
<b>Specificity:</b>	Human FOXO4
<b>Epitope:</b>	N-Terminus
<b>Reactivity:</b>	Human, Mouse, Rat
<b>Purification:</b>	Immunoaffinity purified
<b>Presentation:</b>	PBS, 0.02% sodium azide
<b>Recommended Storage:</b>	Short term 4°C, long term aliquot and store at -20°C, avoid freeze thaw cycles. Store undiluted.
<b>Usage Summary:</b>	FOXO4 antibody can be used for detection of FOXO4 by Western blot at 0.5-1 ug/ml.
<b>Uses:</b>	IHC - Paraffin (5 µg/ml), ICC, Western blot (0.5 - 1 µg/ml), ELISA (Optimal dilution to be determined by the researcher)
<b>Size:</b>	50 µg
<b>Concentration:</b>	1 mg/ml

**Immunohistochemistry Image:**



Anti-FOXO4 antibody IHC of human placenta. Immunohistochemistry of formalin-fixed, paraffin-embedded tissue after heat-induced antigen retrieval. Antibody LS-B5285 concentration 5 ug/ml.

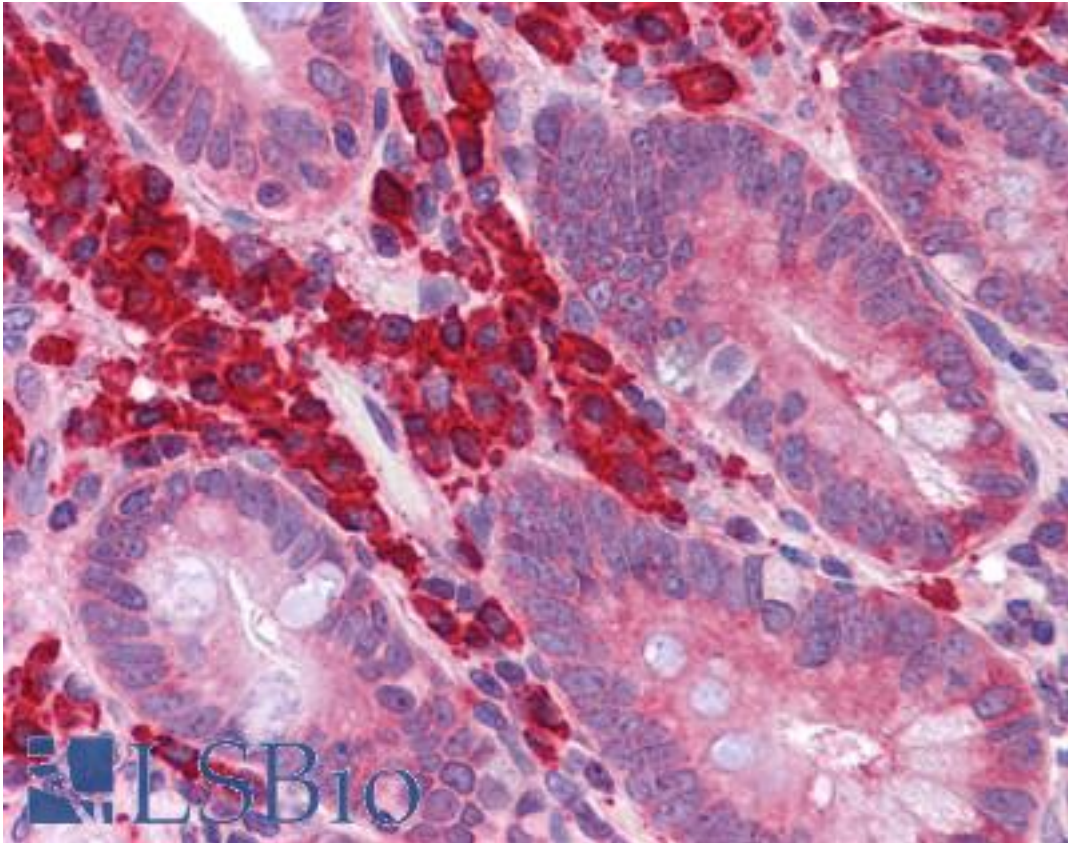
**Immunohistochemistry Image:**



Anti-FOXO4 antibody IHC of human spleen. Immunohistochemistry of formalin-fixed, paraffin-embedded tissue after heat-induced antigen retrieval. Antibody LS-B5285 concentration 5 ug/ml.

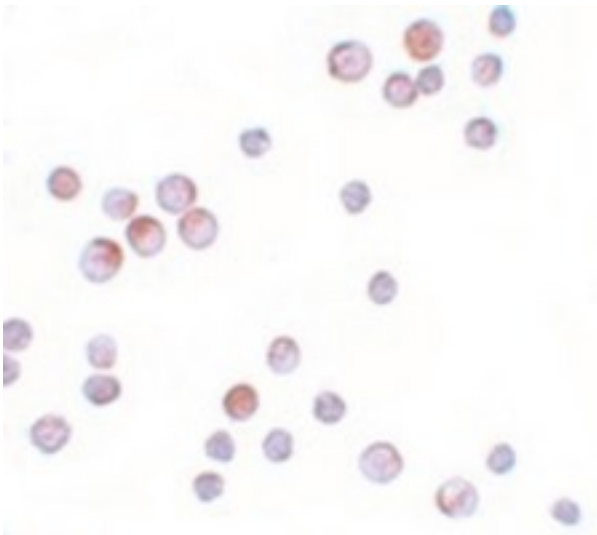


**Immunohistochemistry Image:**



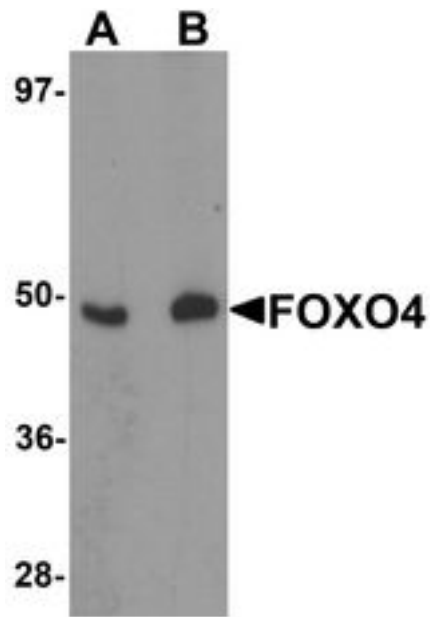
Anti-FOXO4 antibody IHC of human small intestine. Immunohistochemistry of formalin-fixed, paraffin-embedded tissue after heat-induced antigen retrieval. Antibody LS-B5285 concentration 5 ug/ml.

**Immunocytochemistry Image:**



Immunocytochemistry of FOXO4 in HeLa cells with FOXO4 antibody at 10 ug/ml.

**Western Blot Image:**



Western blot analysis of FOXO4 in HeLa cell lysate with FOXO4 antibody at (A) 0.5 and (B) 1 ug/ml.

**Requested From:**

Japan

Laboratory Reagent For In Vitro Research Use Only

Not for resale without prior written consent from LifeSpan BioSciences, Inc.

Created on 9/24/2014

© 2014 LifeSpan BioSciences