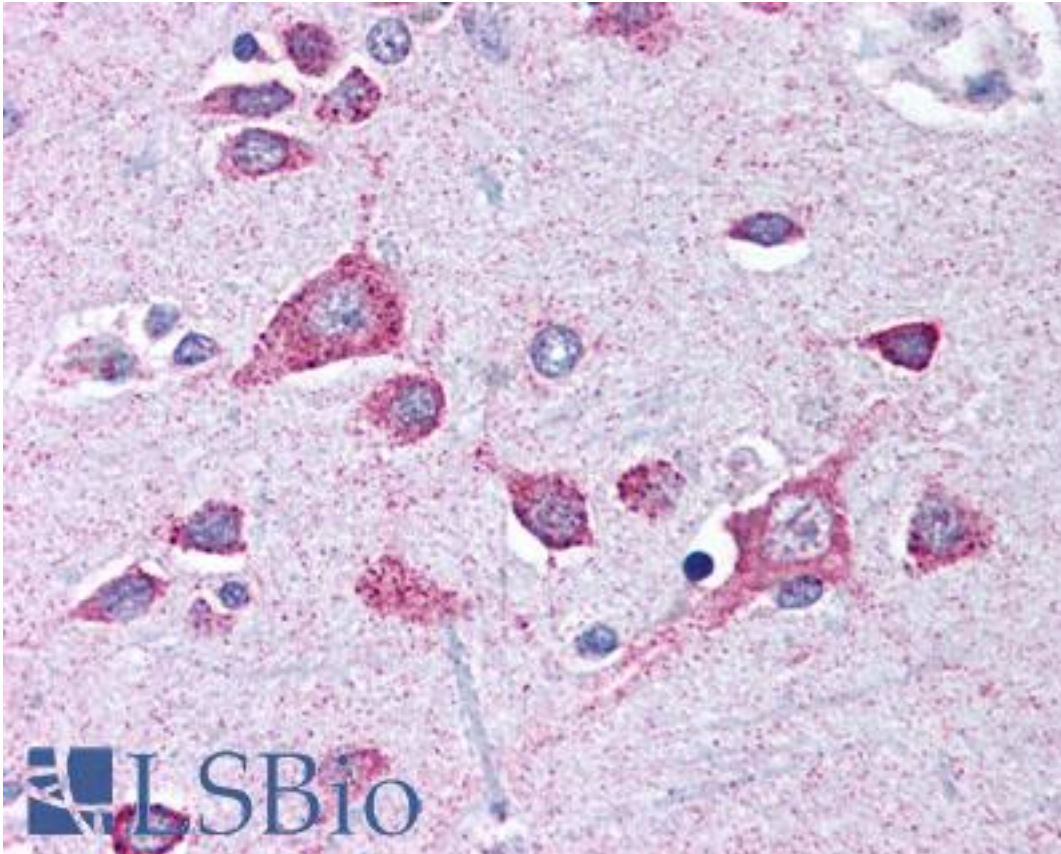


Dipeptidylpeptidase 10 / DPP10 Rabbit anti-Human Polyclonal (aa521-539) Antibody - LS-B528 - LSBio	
CatalogID:	LS-B528
Validation:	This antibody replaces catalog number LS-C2783. It has been validated for use in the following assays: IHC.
Target:	dipeptidyl-peptidase 10 (non-functional) (DPP10)
Synonyms:	DPP10 Antibody, Dipeptidyl peptidase X Antibody, Dipeptidyl-peptidase 10 Antibody, Dipeptidylpeptidase 10 Antibody, DPL2 Antibody, DPRP-3 Antibody, DPRP3 Antibody, Dipeptidyl peptidase 10 Antibody, DPPY Antibody, KIAA1492 Antibody, DPP X Antibody
Family / Subfamily:	Protease / Serine S9B
Host	DPP10 antibody was produced in Rabbit
Clonality:	Polyclonal
Immunogen Species:	Dipeptidylpeptidase 10 / DPP10 antibody was raised against Human
Antigen Type:	Synthetic peptide
Immunogen:	Dipeptidylpeptidase 10 / DPP10 antibody was raised against a synthetic peptide made to residues 521-539 of human DPP10
Specificity:	Reacts with residues 521-539 [LKEAILKKKIGKPEIKILH] of human DPP10.
Epitope:	aa521-539
Reactivity:	Human
Purification:	Affinity purified
Presentation:	PBS, 0.02% sodium azide.
Recommended Storage:	Short term 4°C, long term aliquot and store at -20°C, avoid freeze thaw cycles.
Usage Summary:	Immunohistochemistry: LS-B528 was validated for use in immunohistochemistry on a panel of 21 formalin-fixed, paraffin-embedded (FFPE) human tissues after heat induced antigen retrieval in pH 6.0 citrate buffer. After incubation with the primary antibody, slides were incubated with biotinylated secondary antibody, followed by alkaline phosphatase-streptavidin and chromogen. The stained slides were evaluated by a pathologist to confirm staining specificity. The optimal working concentration for LS-B528 was determined to be 2.5 ug/ml.
Uses:	IHC - Paraffin (2.5 µg/ml), Western blot (1:500 - 1:1000) (Optimal dilution to be determined by the researcher)
Size:	50 µl
Concentration:	1 mg/ml

Immunohistochemistry Image:



Anti-DPP10 antibody IHC of human brain, cortex. Immunohistochemistry of formalin-fixed, paraffin-embedded tissue after heat-induced antigen retrieval. Antibody LS-B528 concentration 5 ug/ml.

Requested From:

Japan

Laboratory Reagent For In Vitro Research Use Only

Not for resale without prior written consent from LifeSpan BioSciences, Inc.

Created on 9/24/2014

© 2014 LifeSpan BioSciences