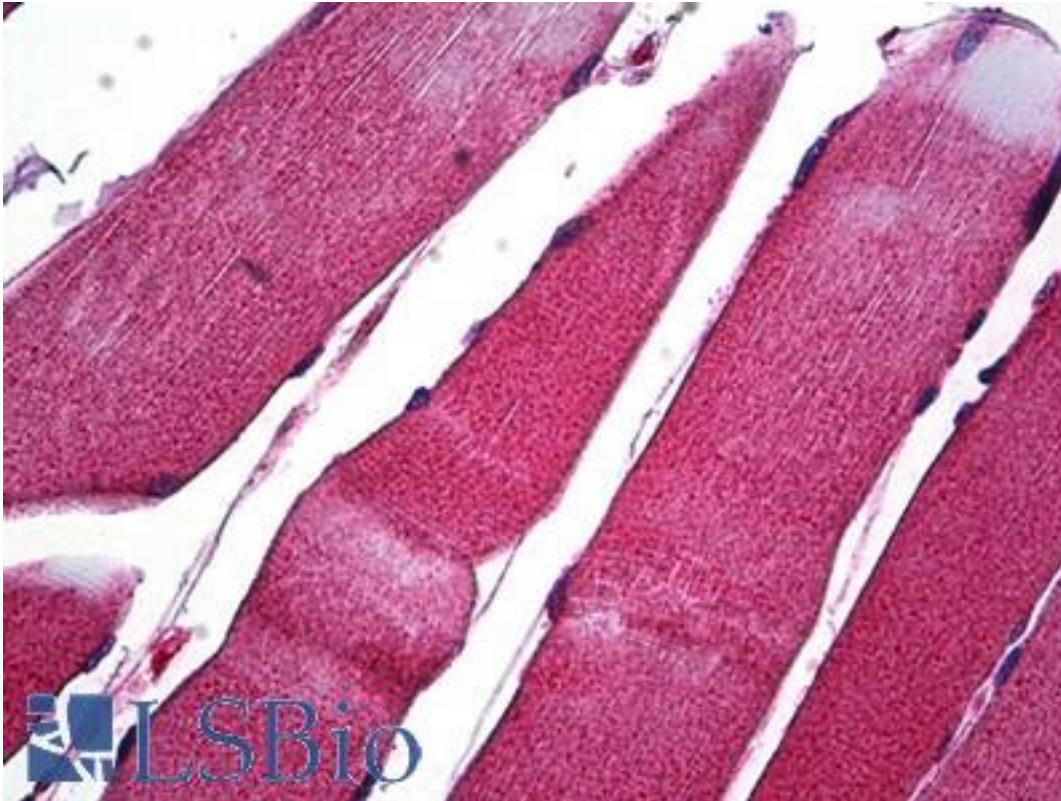


MMP1 / MMP-1 Rabbit anti-Human Polyclonal (C-Terminus) Antibody - LS-B5276 - LSBio	
<b>CatalogID:</b>	LS-B5276
<b>Validation:</b>	This antibody replaces catalog number LS-C50623. It has been validated for use in the following assays: IHC-P.
<b>Target:</b>	matrix metalloproteinase 1 (interstitial collagenase) (MMP1)
<b>Synonyms:</b>	MMP1 Antibody, CLG Antibody, Fibroblast collagenase Antibody, Matrix metalloproteinase 1 Antibody, MMP-1 Antibody, Interstitial collagenase Antibody, Matrix metalloproteinase 1 Antibody, Matrix metalloproteinase-1 Antibody
<b>Family / Subfamily:</b>	Protease / Metalloproteinase M10A
<b>Host</b>	MMP1 antibody was produced in Rabbit
<b>Clonality:</b>	Polyclonal
<b>Isotype:</b>	IgG
<b>Immunogen Species:</b>	MMP1 / MMP-1 antibody was raised against Human
<b>Antigen Type:</b>	Synthetic peptide
<b>Immunogen:</b>	MMP1 / MMP-1 antibody was raised against a synthetic peptide from near C-terminal of human MMP-1 protein.
<b>Epitope:</b>	C-Terminus
<b>Reactivity:</b>	Human
<b>Purification:</b>	Immunoaffinity purified
<b>Presentation:</b>	10 mM PBS, pH 7.4, BSA, sodium azide.
<b>Recommended Storage:</b>	Store at 2°C to 8°C degrees. Do not freeze.
<b>Uses:</b>	IHC - Paraffin (1:50), Western blot (Optimal dilution to be determined by the researcher)
<b>Size:</b>	250 µl

**Immunohistochemistry Image:**



Anti-MMP1 antibody IHC of human skeletal muscle. Immunohistochemistry of formalin-fixed, paraffin-embedded tissue after heat-induced antigen retrieval. Antibody LS-B5276 dilution 1:50.

**Requested From:**

Japan

Laboratory Reagent For In Vitro Research Use Only

Not for resale without prior written consent from LifeSpan BioSciences, Inc.

Created on 9/24/2014

© 2014 LifeSpan BioSciences