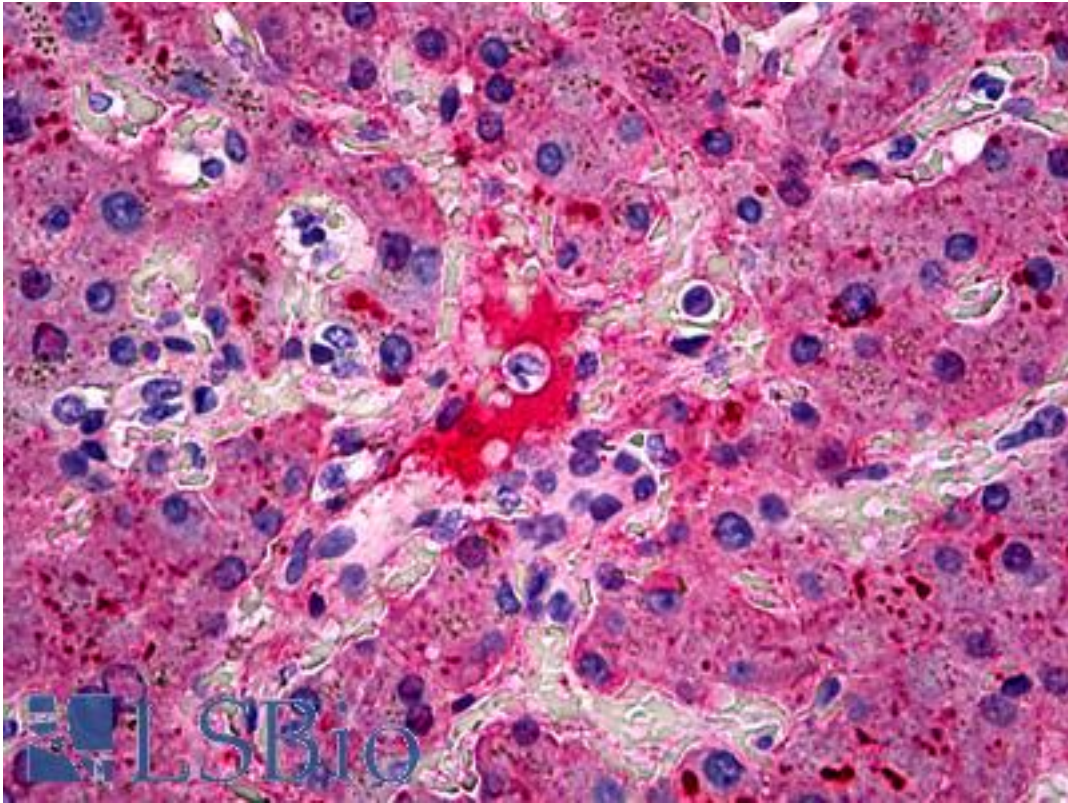


Fibrinogen Rabbit anti-Human Polyclonal Antibody - LS-B5249 - LSBio

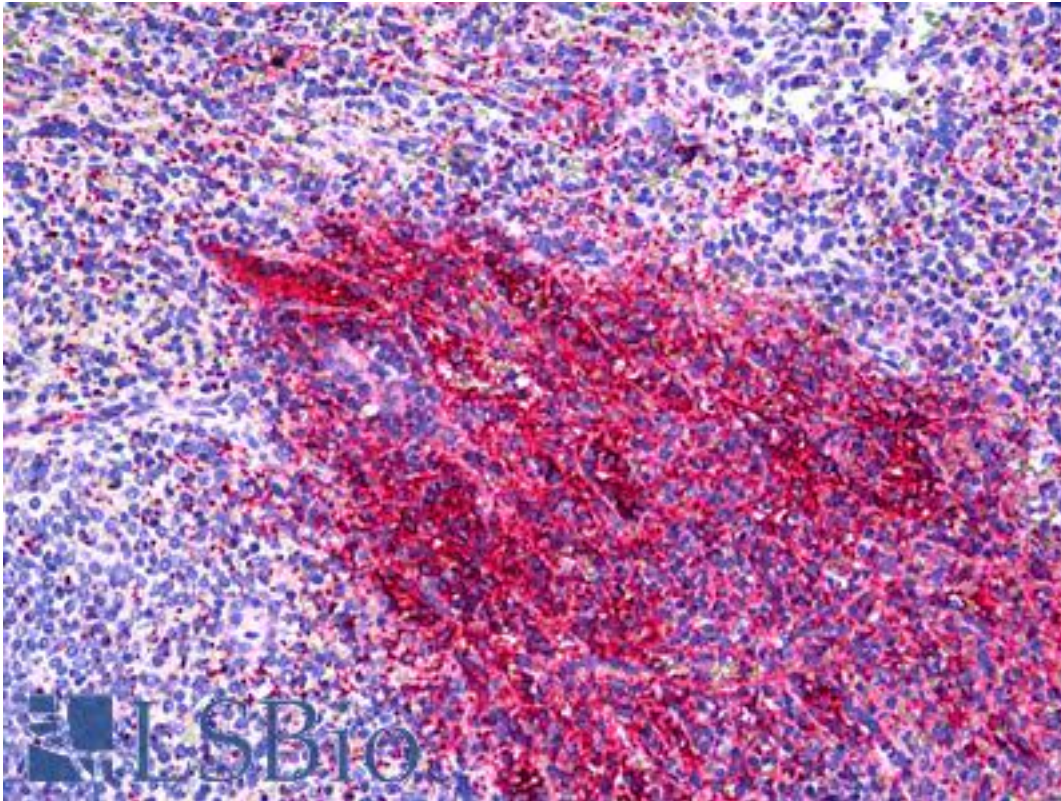
CatalogID:	LS-B5249
Validation:	This antibody replaces catalog number LS-C109178. It has been validated for use in the following assays: IHC-P.
Target:	Fibrinogen
Host	Fibrinogen antibody was produced in Rabbit
Clonality:	Polyclonal
Isotype:	IgG
Immunogen Species:	Fibrinogen antibody was raised against Human
Antigen Type:	Native protein
Immunogen:	Fibrinogen antibody was raised against full length native protein (purified) (Human).
Specificity:	Recognises Fibrinogen
Reactivity:	Human
Purification:	Purified IgG
Presentation:	0.05M Sodium Phosphate; 0.1M NaCl; 1mM EDTA; pH 6.6
Recommended Storage:	Store at -70°C.
Uses:	IHC - Paraffin (5 µg/ml), Western blot, ELISA (Optimal dilution to be determined by the researcher)
Size:	250 µg
Concentration:	1 mg/ml

Immunohistochemistry Image:



Anti-Fibrinogen antibody IHC of human liver. Immunohistochemistry of formalin-fixed, paraffin-embedded tissue after heat-induced antigen retrieval. Antibody LS-B5249 concentration 5 ug/ml.

Immunohistochemistry Image:



Anti-Fibrinogen antibody IHC of human spleen. Immunohistochemistry of formalin-fixed, paraffin-embedded tissue after heat-induced antigen retrieval. Antibody LS-B5249 concentration 5 ug/ml.

Requested From:

Japan

Laboratory Reagent For In Vitro Research Use Only

Not for resale without prior written consent from LifeSpan BioSciences, Inc.

Created on 9/24/2014

© 2014 LifeSpan BioSciences